

ZA16JERT-Li Parts Manual

ZOOMLION INTELLIGENT ACCESS MACHINERY CO.,LTD.

Add:Tengfei Road 997, Wangcheng District, Changsha, Hunan,PRC

Zip Code:410200

E-mail:awm@zoomlion.com

Tel:400-800-0157



ZOOMLION

ZOOMLION

ZA16JERT-Li PARTS MANUAL

2022.7 A

Foreword

Zoomlion appreciates your choice of our machine for your application. This manual must be read and understood in its entirety before operating the machine.

This manual introduces you parts assembly and significant technical specs in detail for working efficiency improving. Keep this manual properly at all times for looking up.

Do not attempt to service and repair the machine if you do not read and understand this manual. If there is any doubt, please consult local service team for troubleshooting. Zoomlion AWP Machinery Company does not take the consequence of wrong maintenance.

This manual should be considered a permanent part of your machine and should remain with the machine at all times. When transferring this machine, be sure to transfer this manual to the transferee.

The content is under intellectual property protection, permission is required for a copy or other application.

There might be some tiny differences in details between your machine and the upgraded one due to the continuous improving. For clarification, questions, or additional information regarding any portions of this manual, Contact Zoomlion AWP Machinery

Our company reserves the right to modify this manual as technical improvement without notice.

Thank you for your trust and support for Zoomlion products!

Zoomlion Intelligent Access Machinery Co.,Ltd.

Contents

Foreword	I
Content	II
SECTION 1 WORK PLATFORM.....	1-1
Platform 02564400100000002	1-1
Anti-crushing device 00771600122300000	1-1
SECTION 2 BOOM	2-1
Jib 02564400200000000	2-1
Upper boom assembly 02564400300000000	2-3
Chain system 00773500710000000	2-7
Tower boom assembly 02564400400000000	2-9
SECTION 3 TURNTABLE.....	3-1
Turntable 02564400830000000	3-1
Hood 02564401110000000	3-5
Counterweight 02564401010000000	3-7
Rotation mechanism 00773400900000000	3-9
SECTION 4 CHASSIS.....	4-1
Chassis assembly 02564402820000000	4-1
Left Tank Body 02564402820200000	4-5
Right Tank Body 02564402820400000	4-7
SECTION 5 POWER SYSTEM.....	5-1
Power Line 02564406218230050	5-1
SECTION 6 HYDRAULIC SYSTEM.....	6-1
Hydraulic tank assembly 02564405200200000	6-1
Hydraulic pump assembly 02564405200400000	6-3
Hydraulic priority valve assembly 02564405200400000	6-5
High pressure filter assembly 02564405201000000	6-7
Platform select valve assembly 00773405211200000	6-9
Main valve assembly 02564405201600000	6-11
Telescopic select valve assembly 00773405212400000	6-13

Contents

Lower leveling cylinder CBV assembly 0077340521280000	6-15
Upper leveling cylinder CBV assembly 0077340521300000.....	6-17
Jib cylinder balance valve assembly 0077340521320000	6-19
Main boom cylinder CBV assembly 0077340521340000.....	6-21
Tower boom cylinder CBV assembly 0077340521360000	6-23
Telescopic cylinder CBV assembly 0077340521380000	6-25
Traveling control valve assembly 0256440520080000	6-27
Emergency pump assembly 0256440521200000	6-29
SECTION 7 ELECTRICAL SYSTEM.....	7-1
Turntable Electric Control Box Assembly 02564406218020000	7-1
Platform Electric Control Box Assembly 00773406238010000.....	7-3
Turntable Cables 02564406218230010	7-5
Boom Cables 02564406200230030.....	7-7
Chassis Cables 02564406218230020	7-9
Platform cables 02564406200230040/Chain cables change 02564406200240010	7-11

ZOOMLION

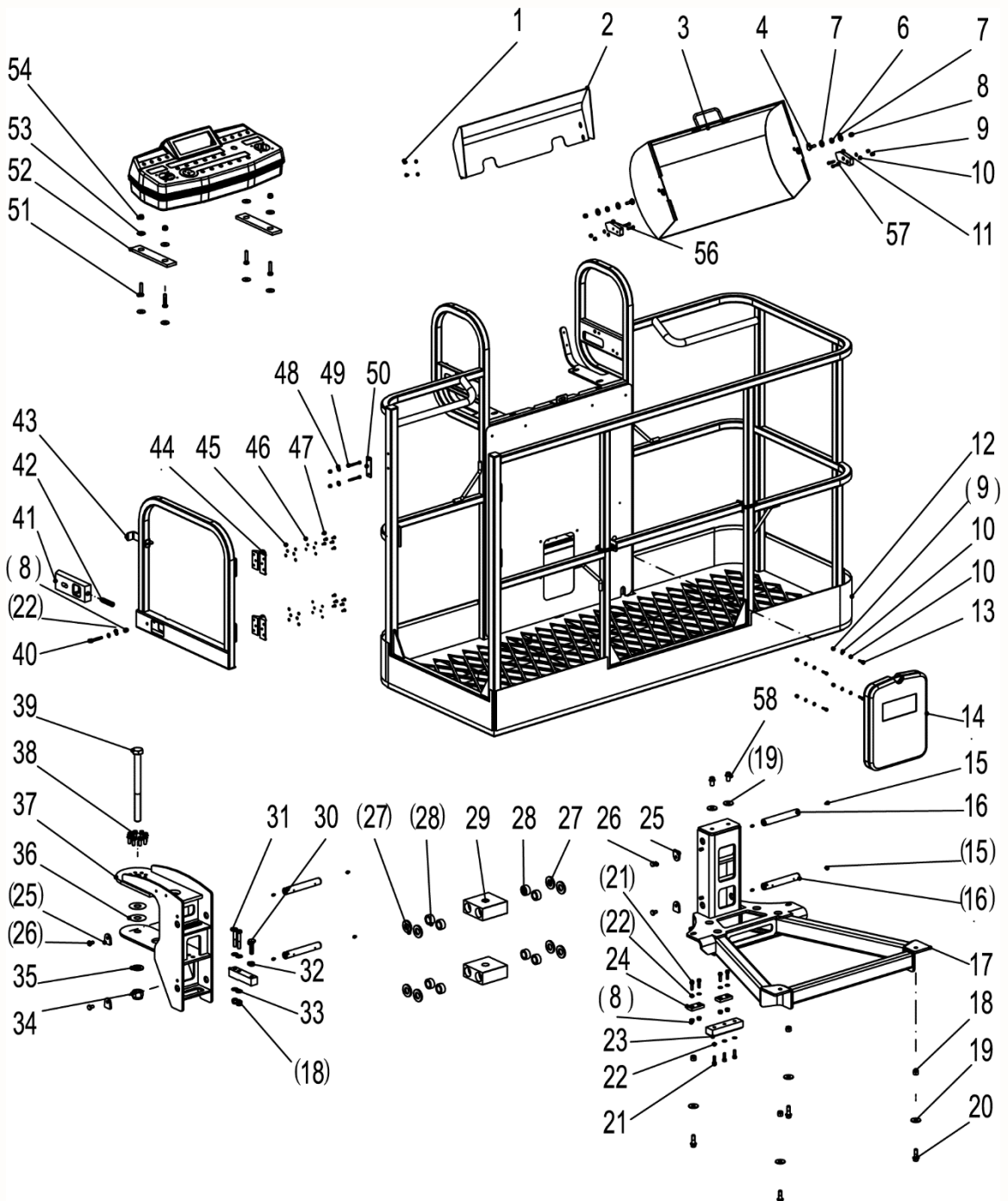
Parts Manual

Section 1 Work Platform



Work Platform 0256440010000002

WORK PLATFORM

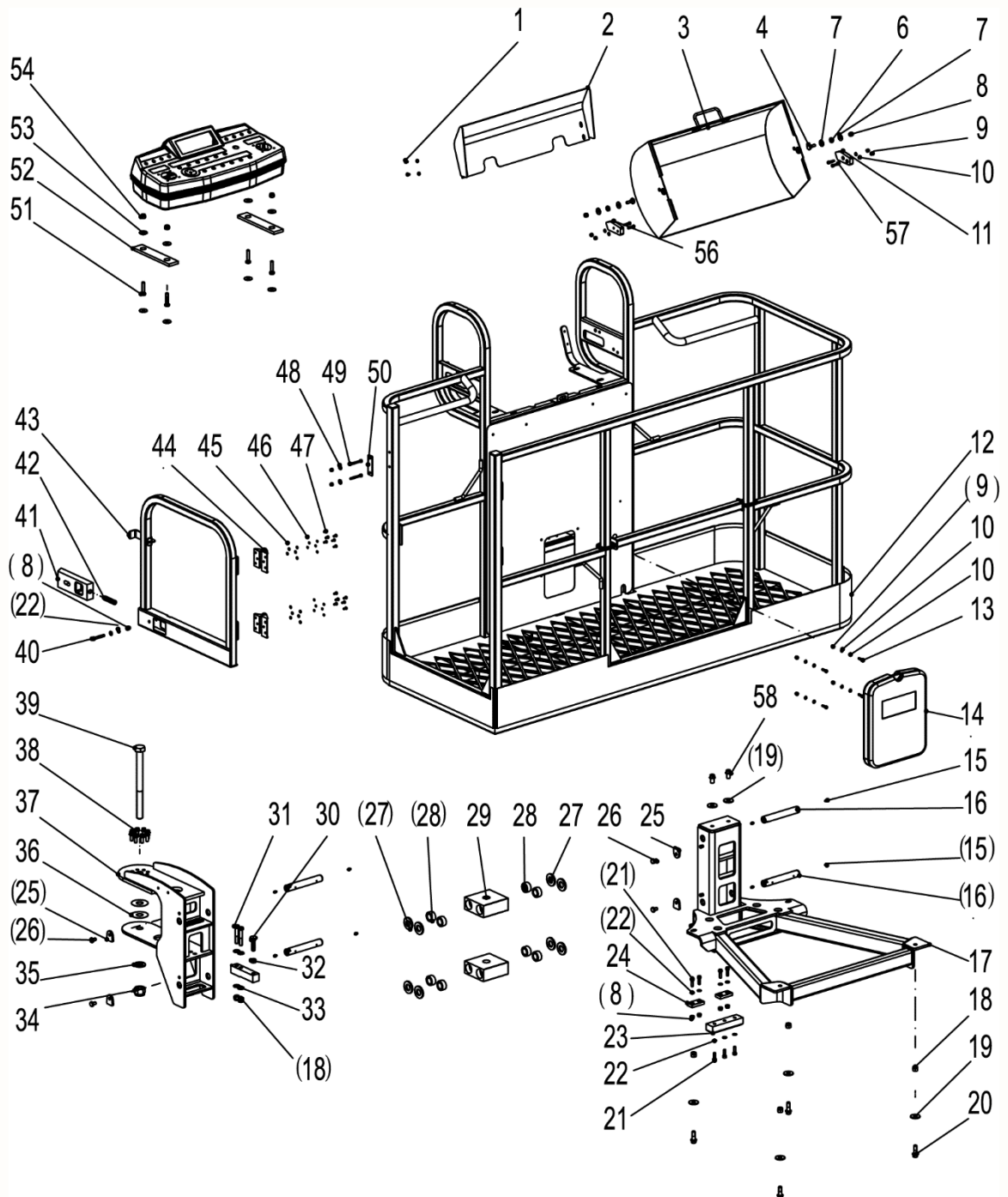


Work Platform 02564400100000002

No.	Material No.	Item and Spec	Qty	Note
1	1040005844	Bolt M6×10-A2-70	4	GB/T5783
2	00771100110240000	Back plate weldment	1	
3	00771100110231000	Hood	1	
4	00773400100261060	Bolt	2	
6	00773400100261050	Bearing	2	
7	1040302480	Washer 8-200HV	4	GB/T96.1
8	1040200503	Nut M8-8	7	GB/T889.1
9	1040201896	Nut M6-8	10	GB/T889.1
10	1040300771	Washer 6-200HV	16	GB/T97.1
11	00771100110230400	Block	1	
12	00773400130810001	Platform weldment	1	
13	1040102372	Hexagon socket head cap screws M6×20-A2-70	4	GB/T70.1
14	1999904986	Document box	1	
15	1080000005	Oil cup M6×1	7	JB_T7940.1
16	02564400100401020	Axle	4	
17	02564400100420000	Tray weldment	1	
18	1040201163	Nut M12-10	6	GB/T889.1
19	1040302821	Washer 12-200HV	6	GB/T96.1
20	1040004556	Bolt M12×35-8.8	4	GB/T16674.1
21	1040103112	Screw M8×25-8.8	7	GB/T70.1
22	1040301515	Washer 8-200HV	9	GB/T97.1
23	00773400100401040	Spacer	1	
24	00773400130401060	Spacer III	2	
25	02564400100401030	Snap-gauge	4	
26	1040004646	Bolt M10×15-8.8	4	GB/T5783
27	00773400130401040	Spacer I	8	
28	1054600077	Kingpin bearing	8	
29	02564400100401010	Linkage	2	
30	1040006458	Strong oval head square neck bolt	1	

Work Platform 0256440010000002

WORK
PLATFORM

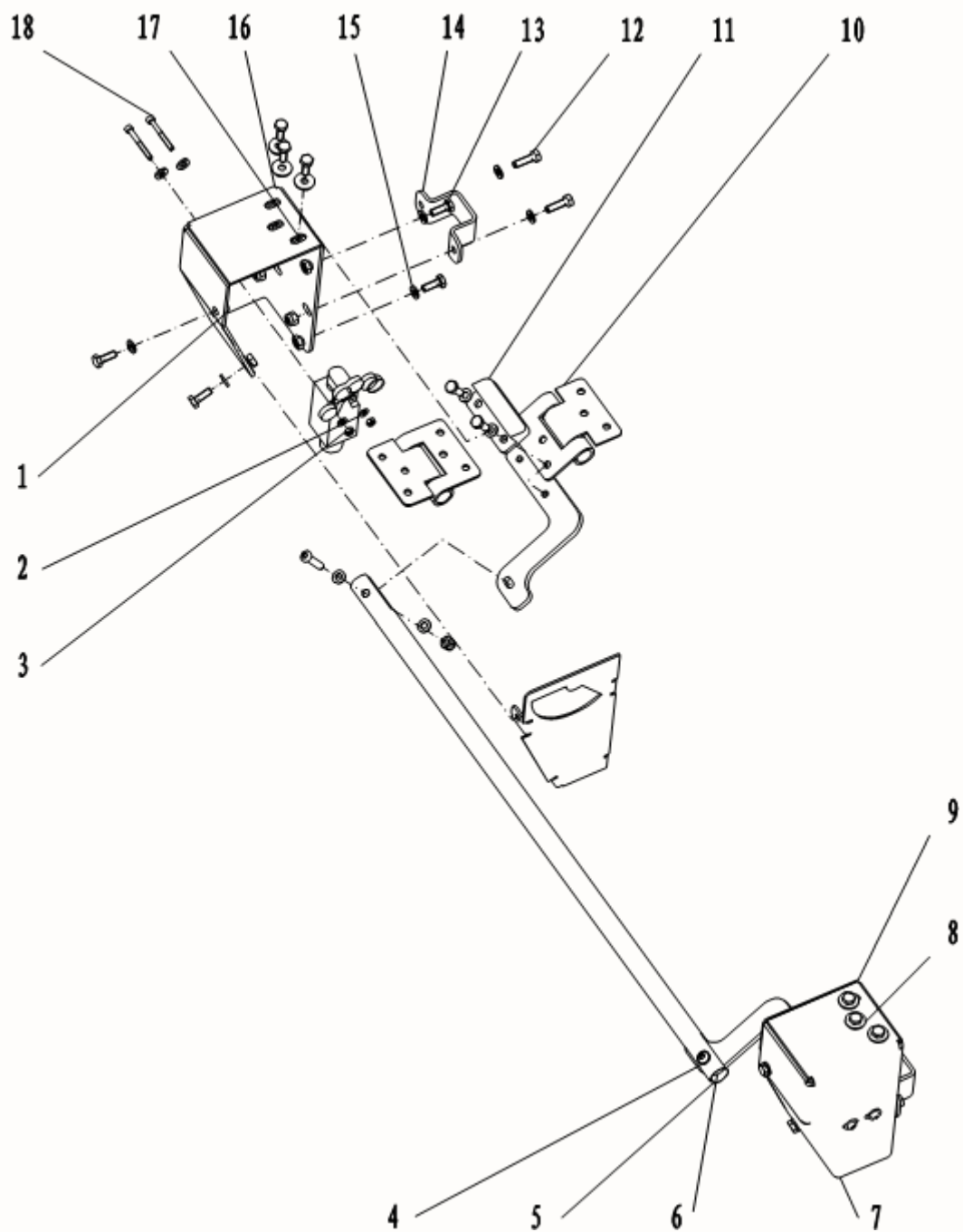


Work Platform 02564400100000002

No.	Material No.	Item and Spec	Qty	Note
31	1040001703	Bolt M12×65-10.9	2	GB/T5782
32	1040201381	Nut M12-8	1	GB/T6170
33	1040302490	Washer 12-200HV	4	GB/T97.1
34	1040201111	Nut M24-10	1	GB/T889
35	1040301511	Washer 24-200HV	1	GB/T97.1
36	00773400100401030	Adjustable pad	2	
37	02564400100410000	Transition seat	1	
38	1040006524	Bolt	8	
39	1040004505	Bolt M24×280-10.9	1	GB/T5782
40	1040004522	Bolt M8×50-8.8	1	GB/T5783
41	00775600101801010	Key cylinder	1	
42	00775600101801020	Spring	1	
43	00773400100230000	Swing gate	1	
44	1101000163	Spring hinge	2	
45	1040300514	Washer 5-200HV	12	GB/T97.1
46	1029904911	Spring washer 5	12	GB9
47	1040004672	Bolt M5×10-8.8	12	GB/T5783
48	1040300735	Washer 6-200HV	2	GB/T96.1
49	1040103173	Screw	2	
50	00773600130201010	Bumper block	1	
51	1040004508	Bolt M10×45-8.8	4	GB/T5783
52	00772700100001020	Rubber pad	2	
53	1040302512	Washer 10-200HV	8	GB/T96.1
54	1040200504	Nut M10-8	4	GB/T889.1
55	1022397103	Open bellows	1	
56	00771100110230200	Block II	1	
57	1040006017	Screw	4	
58	1040005852	Bolt M12×20-8.8	2	GB/T5787

Anti-crushing device 00771600122300000

00771600122300000



Anti-crushing device 00771600122300000

Serial No.	Part No.	Name and Spec.	Qty.	Remark
1	00771600122301250	Limit plate weldment I Tp2	1	
2	1040302410	Washer 4-200HV	4	GB/T97.1
3	1040201772	Nut M4-A2-70	4	GB/T6170
4	1040103123	Screw M6×30-A2-70	2	GB/T70.2
5	00771600122301180	Drop bar Ow19×1	1	
6	00771600132301080	Connecting plate Tp6	2	
7	00771600122301230	Bracket II Tp3	1	
8	1040300735	Washer 6-200HV	6	GB/T96.1
9	00771600122301260	Limit plate weldment II Tp2	1	
10	1159901036	Spring hinge	2	
11	00771600122301190	Limit block T18	2	
12	1040001631	Bolt M6×20-A2-70	4	GB/T5783
13	1040002555	Bolt M6×16-A2-70	18	GB/T5783
14	00771400112301150	Steel tube clamp Tp3	2	
15	1040300771	Washer 6-200HV	24	GB/T97.1
16	00771600122301200	Bracket I Tp3	1	
17	1040201896	Nut M6-8	12	GB/T889.1
18	1040102776	Screw M4×35-8.8	4	GB/T70.1

ZOOMLION

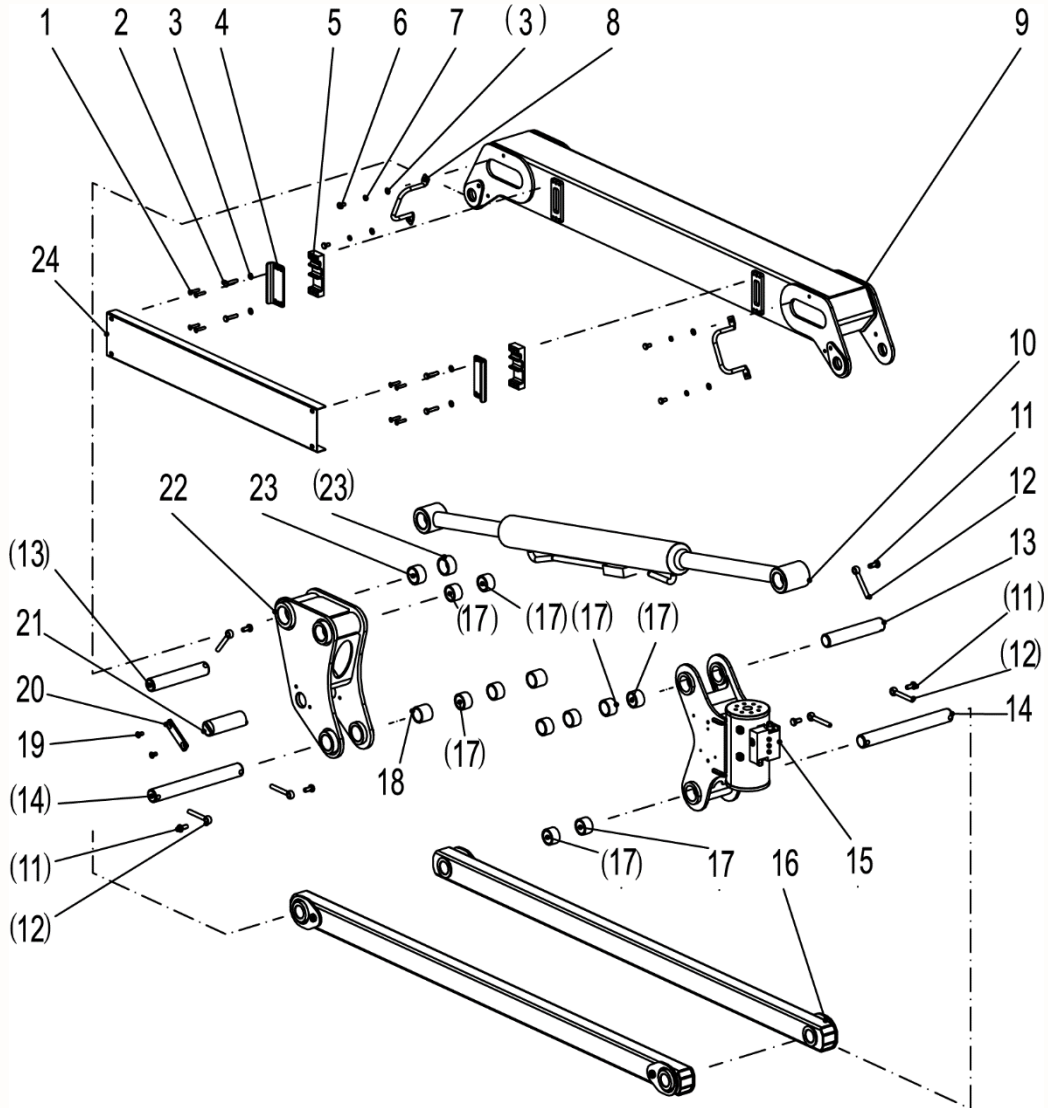
Parts Manual

Section 2 Boom



Jib 0256440020000000

BOOM

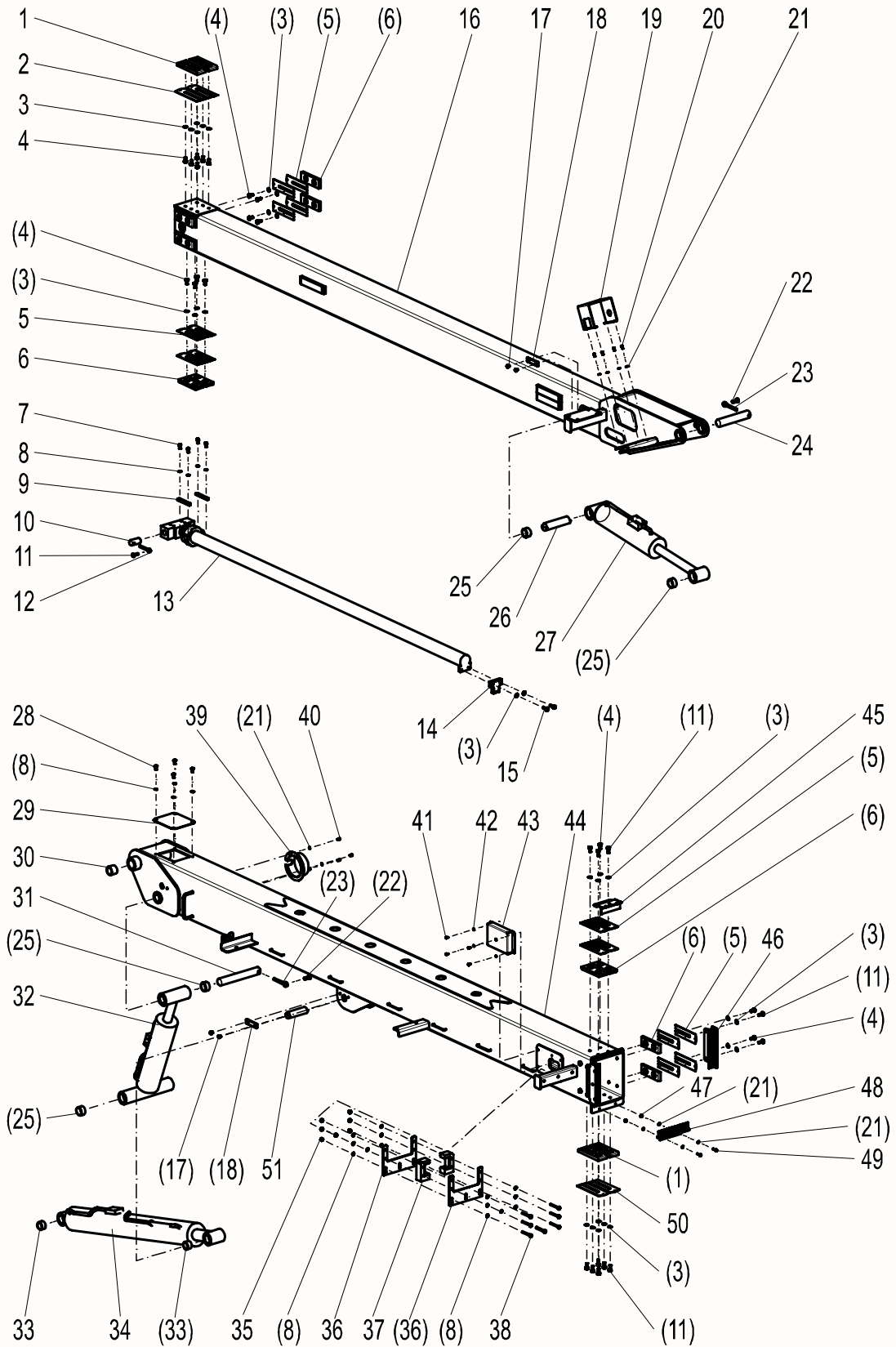


Jib 02564400200000000

No.	Material No.	Item and Spec	Qty	Note
1	1040103133	Screw	8	
2	1040004619	Bolt M8×35-8.8	4	GB/T5783
3	1040301515	Washer 8-200HV	8	GB/T97.1
4	00773700200001100	Pipeline pressing plate	2	
5	00773700200001090	Pipeline slot	2	
6	1040004590	Bolt M8×14-8.8	4	GB/T5783
7	1040301510	Washer 8	4	GB/T93
8	00771400211200000	Adjustable clip	2	
9	00773700200400001	Linkage	1	
10	02564400200800000	Jib cylinder	1	
11	1040002433	Bolt M10×20-8.8	6	GB/T5783
12	00773400300001200	Stop pin	6	
13	00773700200001050	Pin	2	
14	00773700200001060	Pin	2	
15	1010201471	Rotary actuator	1	
16	00773700200600000	Lower linkage	2	
17	00773400200001010	Bearing	10	
18	00773700200001010	Bearing	2	
19	1040103076	ScrewM8×16-8.8	4	GB/T70.3
20	00773700400001290	Snap-gauge	2	
21	00773700200001070	Pin	1	
22	02564400200200000	Support	1	
23	00773400200001020	Bearing	2	
24	00773700200001082	Pipeline protective board	1	

Upper Boom Assembly 0256440030000000

BOOM

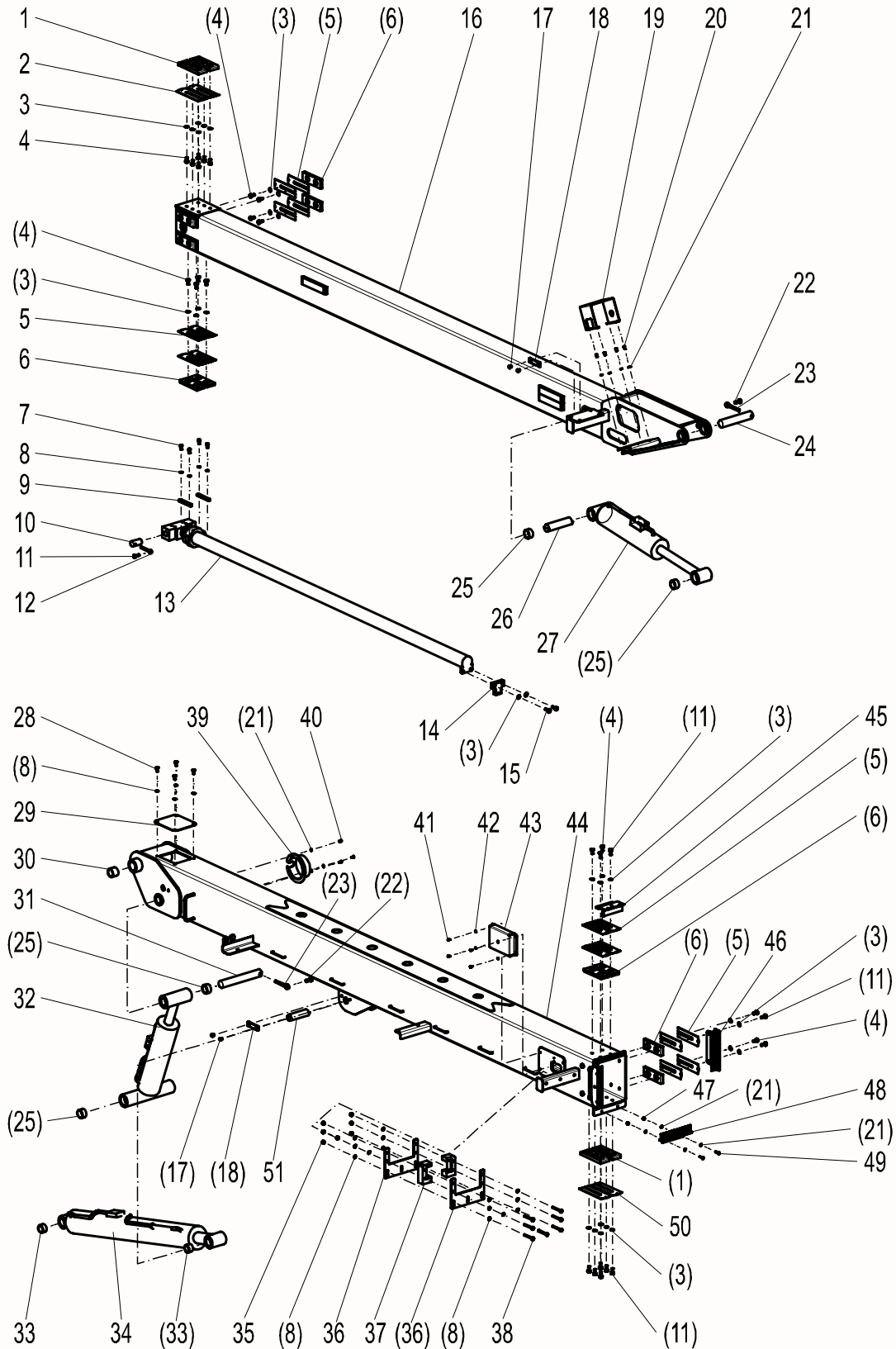


Upper Boom Assembly 00773400300000000

No.	Material No.	Item and Spec	Qty	Note
1	00773400312600000	Slider assembly	4	
2	00773400300001121	Adjustable gasket	2	
3	1040302489	Washer 10-200HV	38	GB/T97.1
4	1040002433	Bolt M10×20-8.8	24	GB/T5783
5	00771900301801051	Adjustable gasket	24	
6	00773400312800000	Slider assembly	12	
7	1040103111	ScrewM8×16-8.8	4	GB/T70.1
8	1040301515	Washer 8-200HV	22	GB/T97.1
9	00773500310001010	Cylinder pressing plate	2	
10	00773500310001030	Telescopic cylinder pin	2	
11	1040002434	Bolt M10×25-8.8	14	GB/T5783
12	00773400300001200	Stop pinφ10×80	2	
13	02564400300600000	Telescopic cylinder	1	
14	02564400300001080	Telescopic cylinder supporting plate	1	
15	1040004565	Bolt M10×30-8.8-DKL	2	GB/T5783
16	02564400300400000	Telescopic boom	1	
17	1040103076	ScrewM8×16-8.8	8	GB/T70.3
18	00773700400001290	Snap-gauge	4	
19	00773400300001280	Platform select-valve cover	1	
20	1040103038	ScrewM5×10	4	GB/T70.1
21	1040300771	Washer 6-200HV	11	GB/T97.1
22	1040004511	Bolt M12×30-8.8	2	GB/T5783
23	00773400200001070	Stop pin	3	
24	02564400300001050	Pin I	1	
25	00773400200001020	Bearing	8	
26	02564400300001020	Leveling cylinder pin	1	
27	02564400300800000	Upper leveling cylinder	1	
28	1040004517	Bolt M8×16-8.8	4	GB/T5783
29	00773400310001200	Small cover	1	
30	00773400300001210	Bearing	2	
31	02564400300001130	Pin II	1	
32	02564400301000000	Lower leveling cylinder	1	

Upper Boom Assembly 0256440030000000

BOOM



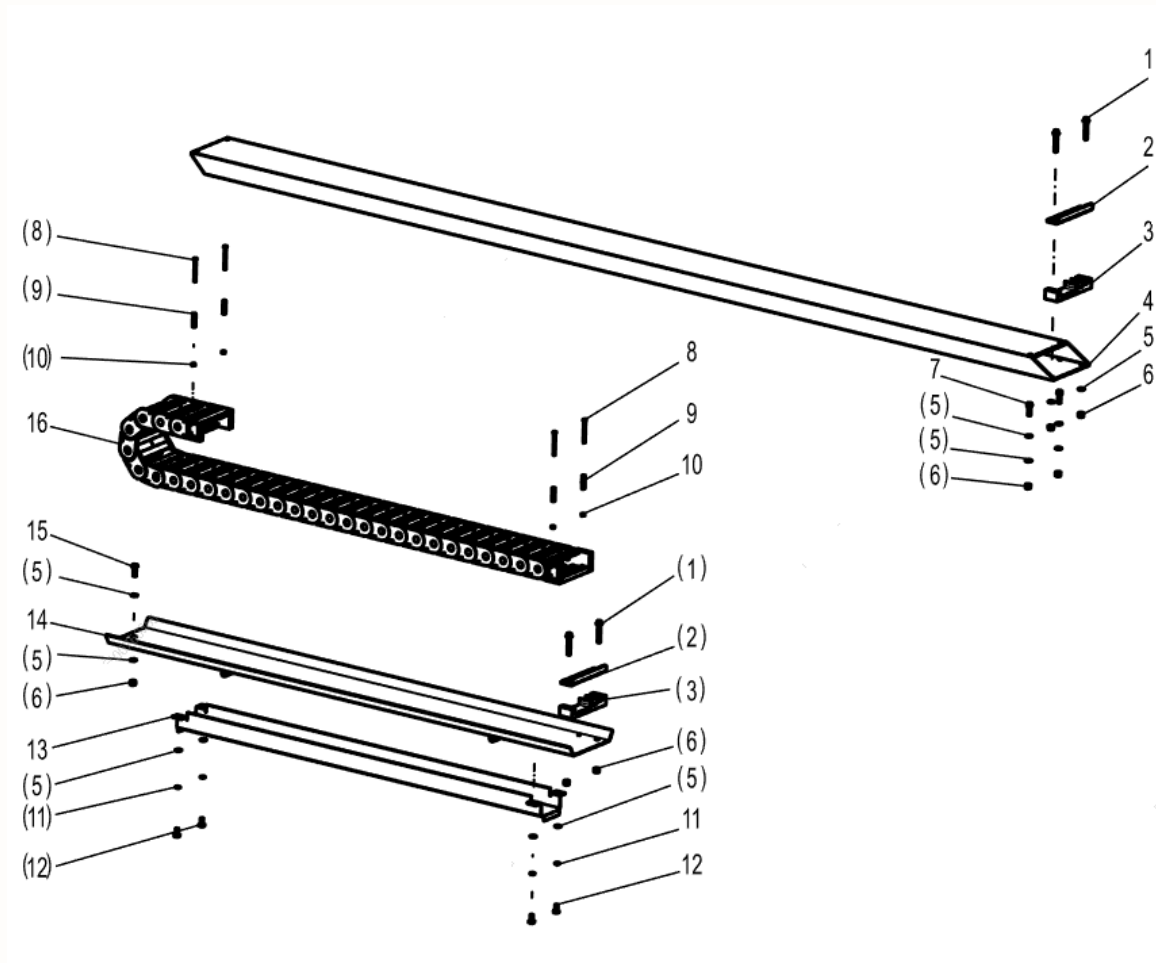
Upper Boom Assembly 00773400300000000

No.	Material No.	Item and Spec	Qty	Note
33	00773400200001010	Bearing	4	
34	02564400301400000	Main boom lifting cylinder	1	
35	1040200503	Nut M8-8	7	GB/T889.1
36	00773500310001060	Slider fixed plate	2	
37	00773500310001050	Chain slider	2	
38	1040004523	Bolt M8×70-8.8	7	GB/T5783
39	00773700302400001	Protective cover	1	
40	1040102778	Screw M6×10-8.8	3	GB/T70.1
41	1040004591	Bolt M4×8-8.8	4	GB/T5783
42	1040302410	Washer 4-200HV	4	GB/T97.1
43	02564400300001270	Sensor protective cover	1	
44	02564400300200000	Base boom	1	
45	02564400301800001	Upper dust-proof brush	1	
46	02564400301200001	Side brush	2	
47	1040201896	Nut M6-8	2	GB/T889.1
48	02564400302000001	Lower dust-proof brush	1	
49	1040001640	Bolt M6×25-A2-70	2	M6×25-A2-70
50	00773400300001101	Adjustable gasket	2	
51	02564400300001070	Pin III	1	

Chain System 0077350071000000

BOOM

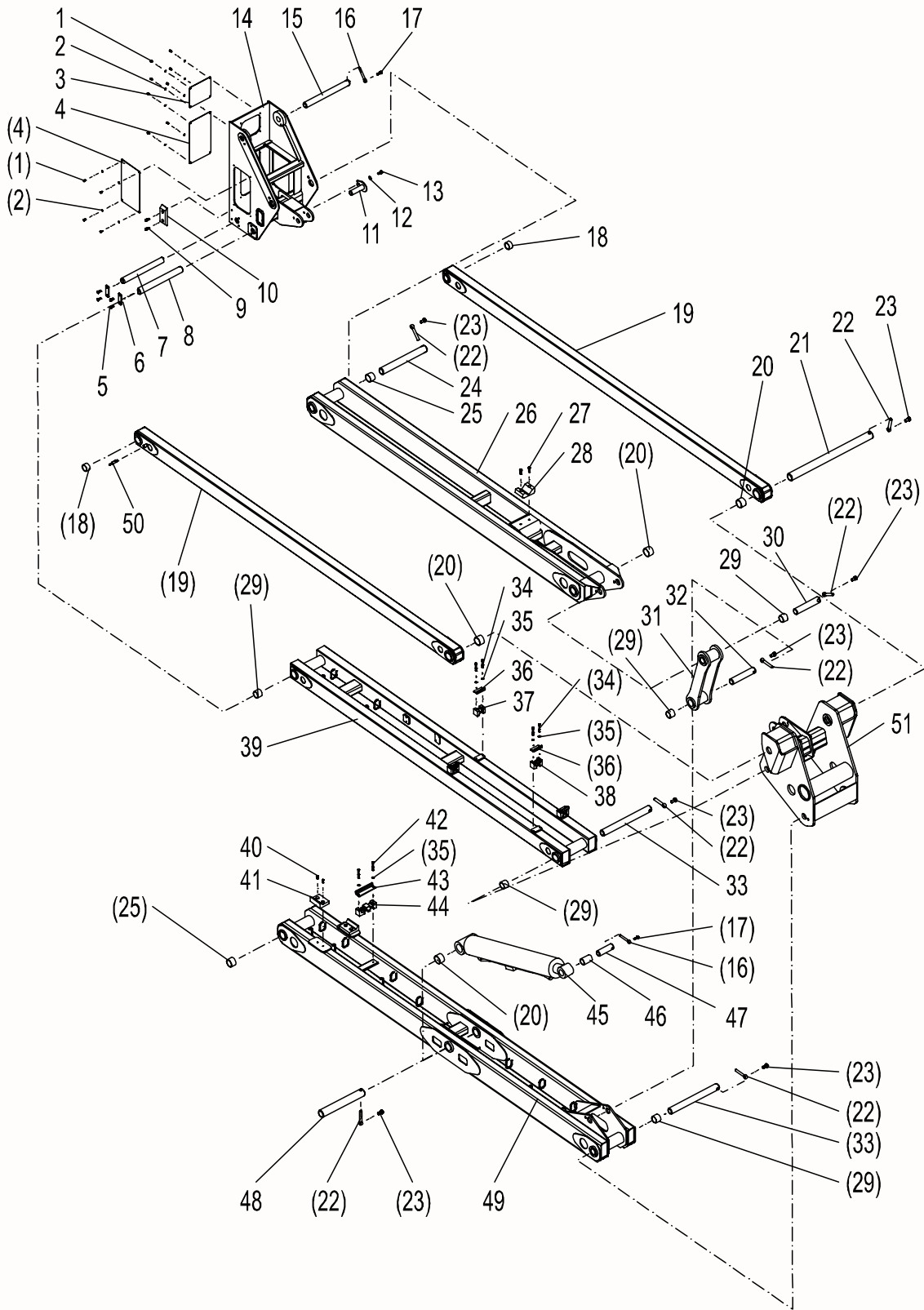
零件图



Chain System 0077350071000000

No.	Material No.	Item and Spec	Qty	Note
1	1040004557	Bolt M8×50-8.8	4	GB/T16674.1
2	00773400700001050	Bending plate	2	
3	00773400700001020	Hose seat	2	
4	00773500710001010	Quarter bend	1	
5	1040301515	Washer 8-200HV	12	GB/T97.1
6	1040200503	Nut M8-8	7	GB/T889.1
7	1040103112	ScrewM8×25-8.8	2	GB/T70.1
8	1040004670	Bolt M5×60-8.8	4	GB/T5782
9	00773400700001060	Pipe jacking	4	
10	1040200574	Nut M5-8	4	GB/T6170
11	1040301510	Washer 8	4	GB/T93
12	1040004517	Bolt M8×16-8.8	4	GB/T5783
13	00773500710001040	Tube slot	1	
14	00773500710400000	Tray	1	
15	1040004519	Bolt M8×25-8.8	1	GB/T5783
16	00773500710001080	Chain mechanism	1	

Tower Boom Assembly 0256440040000000



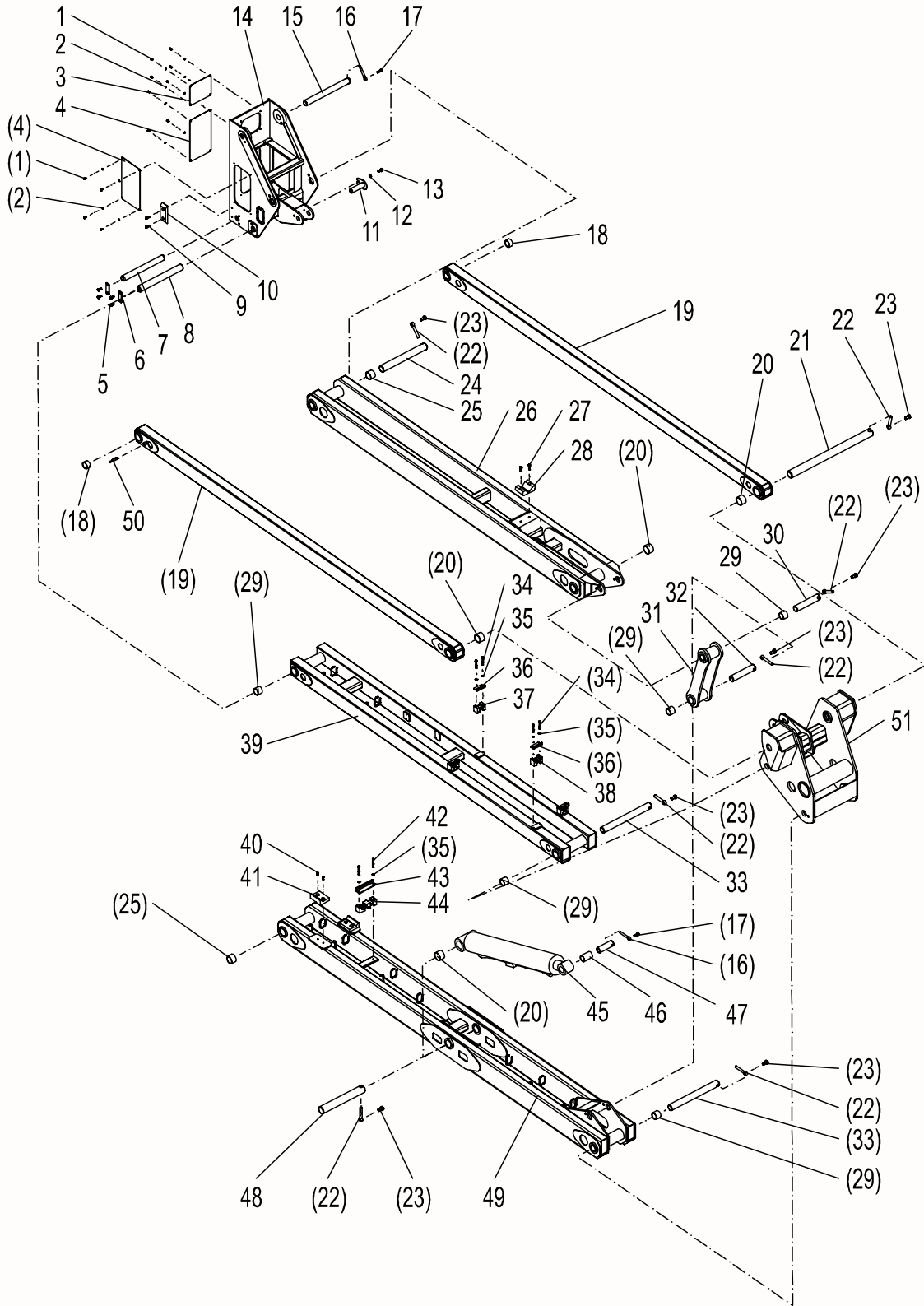
BOOM

Tower Boom Assembly 0256440040000000

No.	Material No.	Item and Spec	Qty	Note
1	1040005844	Bolt M6×10-A2-70	16	GB/T5783
2	1040300771	Washer 6-200HV	16	GB/T97.1
3	02564400400001150	Seal plateI	1	
4	02564400400001140	Seal plate	3	
5	1040002433	Bolt	8	GB/T5783
6	00773400410001180	Axle board	4	
7	02564400400001030	Axle A3	1	
8	02564400400001040	Axle A4	1	
9	1040102761	ScrewM10×20-8.8	4	GB/T70.1
10	02564400400001110	Upper upright - side guide slider	2	
11	02564400401800000	Pin assembly	1	
12	1040302490	Washer 12-200HV	1	GB/T97.1
13	1040002436	Bolt M12×25-8.8	1	GB/T5783
14	02564400401000000	Upper upright	1	
15	02564400400001010	Axle A1	1	
16	00773400200001070	Stop pin	2	
17	1040004511	Bolt M12×30-8.8	2	GB/T5783
18	00773700400001140	Bearing	4	
19	02564400400400000	Linkage II	2	
20	00773400400001130	Bearing	8	
21	02564400400001050	Axle A5	1	
22	00773400400001250	Stop pin	7	
23	1040004570	Bolt M16×30-8.8	7	GB/T5783
24	02564400400001020	Axle A2	1	
25	00773400300001070	Bearing	4	
26	02564400400800000	Linkage IV	1	
27	1040101995	ScrewM10×30-8.8-DKL	2	GB/T70.1
28	02564400400001130	Cushion block	1	
29	00773400300001050	Bearing	10	
30	02564400400001060	Axle A6	1	
31	02564400401400000	Pull rod	1	
32	02564400400001090	Axle A10	1	
33	02564400400001080	Axle A9	1	

Tower Boom Assembly 0256440040000000

BOOM



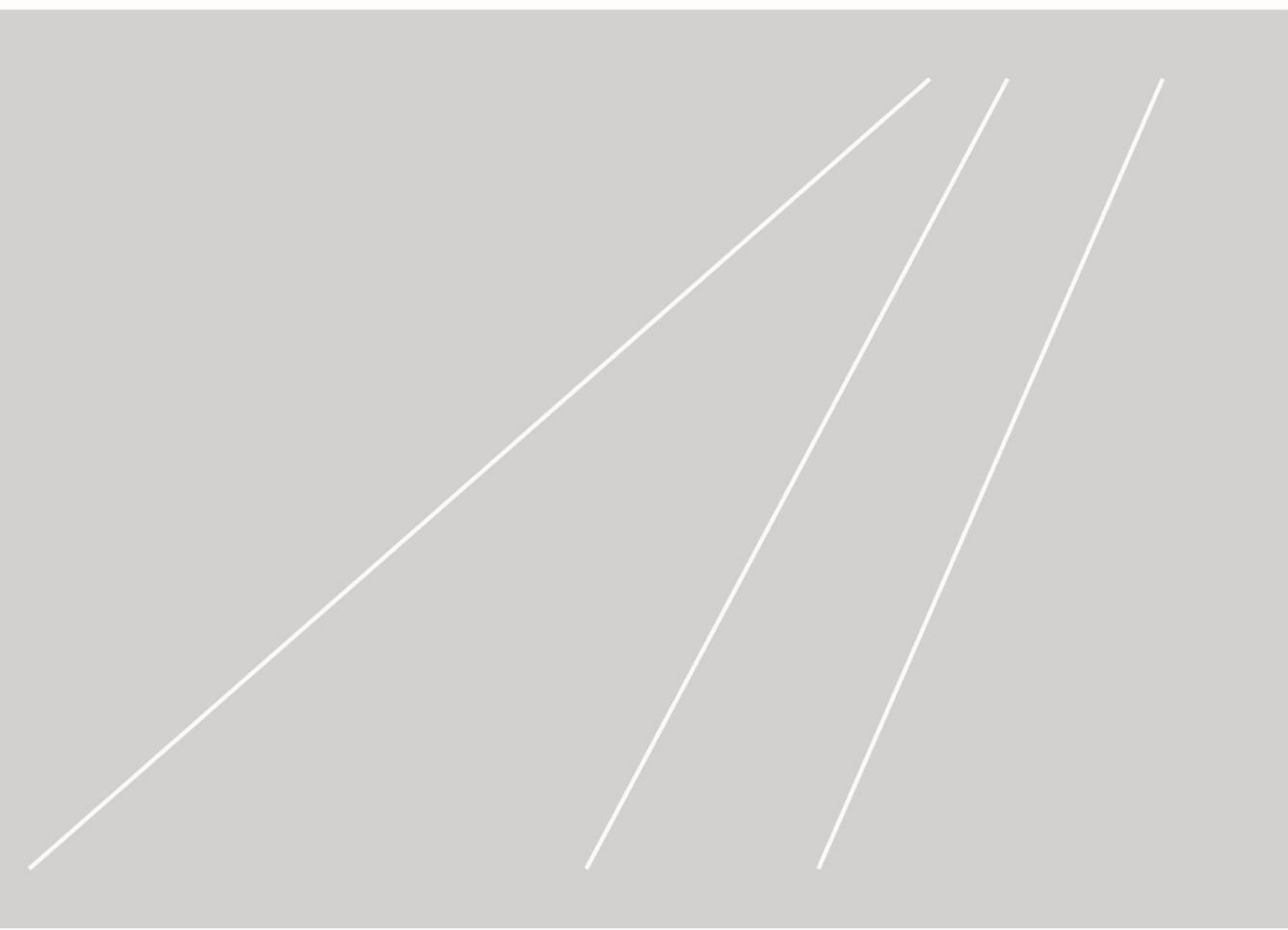
Tower Boom Assembly 02564400400000000

No.	Material No.	Item and Spec	Qty	Note
34	1040004599	Bolt M8×60-8.8	8	GB/T5782
35	1040301515	Washer 8-200HV	10	GB/T97.1
36	02564400400001200	Board II	4	
37	02564400400001180	Pipe clampII	2	
38	02564400400001190	Pipe clampIII	2	
39	02564400400600000	Linkage III	1	
40	1040103111	ScrewM8×16-8.8	4	GB/T70.1
41	02564400400001120	Guide block	2	
42	1040103115	Screw M8×65-8.8	2	GB/T70.1
43	02564400400001170	Board I	1	
44	02564400400001160	Pipe clampI	1	
45	02564400401600000	Tower boom lifting cylinder	1	
46	00773400400001080	Bearing	1	
47	02564400400001070	Axle A7	1	
48	02564400400001100	Axle A10	1	
49	02564400400200000	Linkage I	1	
50	02564400400001210	Positioning axle	1	
51	02564400401200000	Lower upright	1	

ZOOMLION

Parts Manual

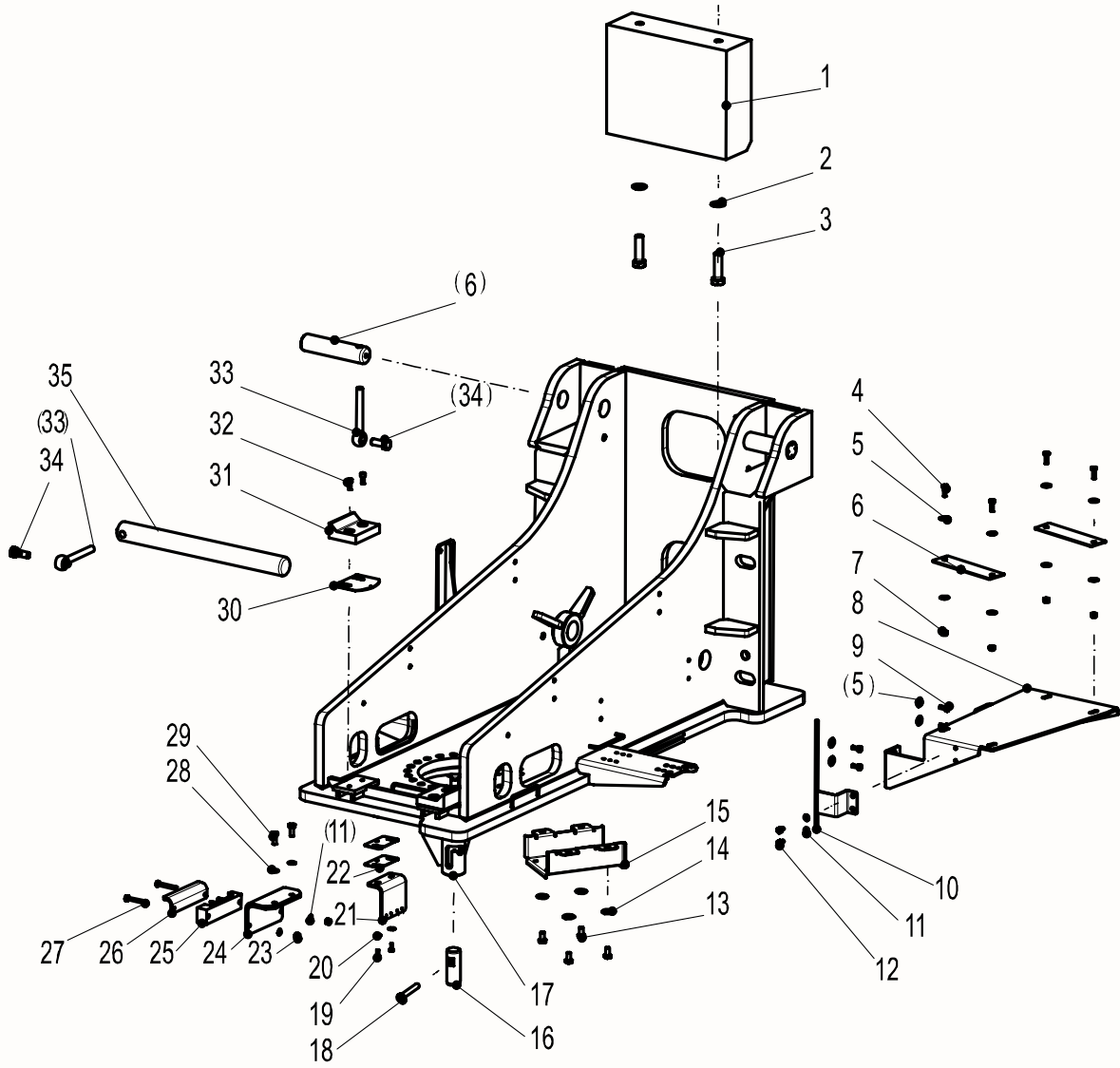
Section 3 Turntable



Turntable 0256440083000000

零件图

TURNTABLE



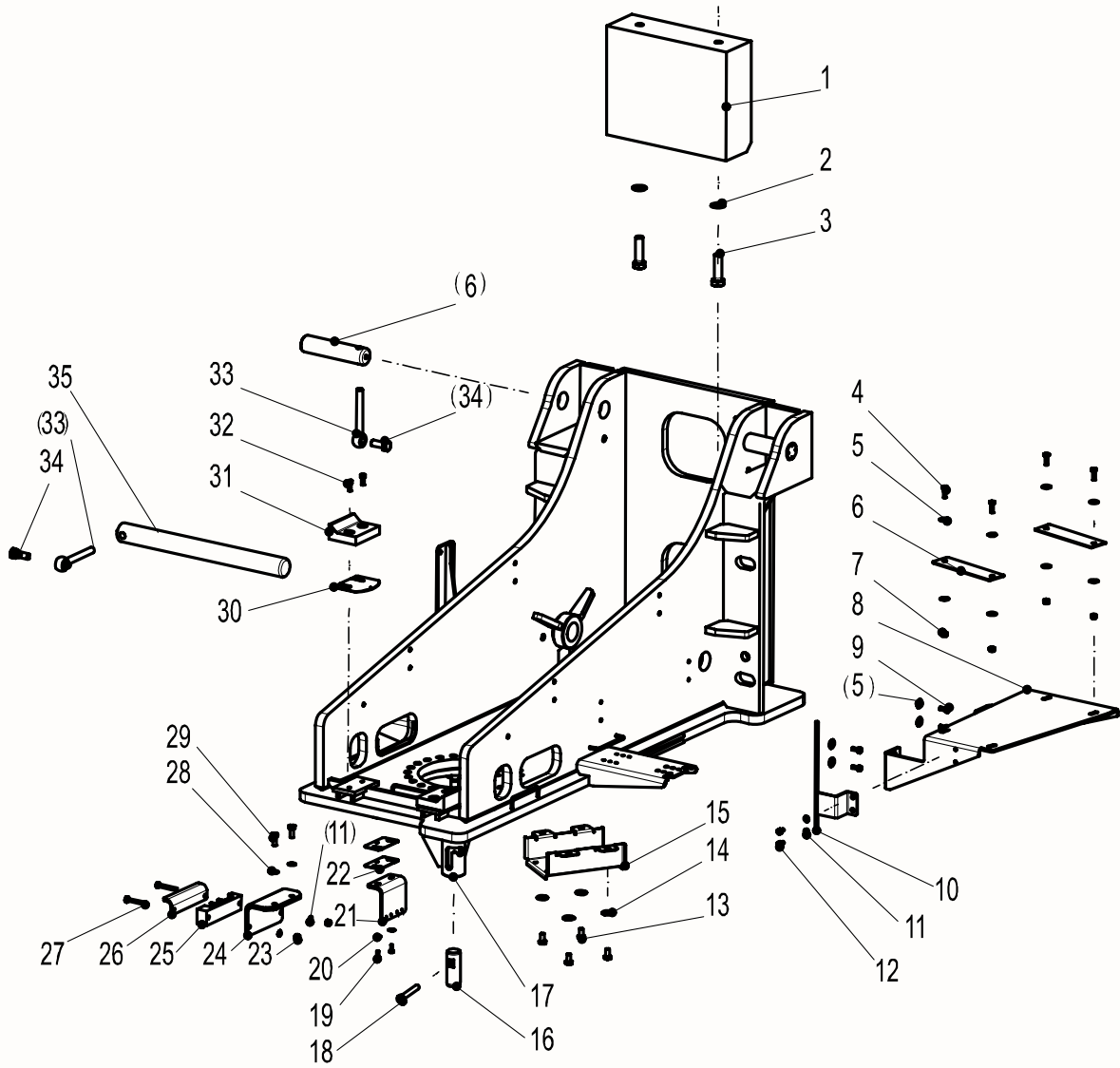
Turntable 0256440083000000

No.	Material No.	Item and Spec	Qty	Note
1	02564400830001010	Counterweight	1	
2	1040301033	Washer 20-300HV	2	GB/T97.1
3	1040002517	Bolt M20×70-10.9	2	GB/T5782
4	1040004519	Bolt M8×25-8.8	4	GB/T5783
5	1040303580	Washer	12	
6	00774100800001140	Electric control box rubber pad	2	
7	1040202855	Nut	4	
8	02564400800001011	Electric control cabinet seat	1	
9	1040004518	Bolt M8×20-8.8	4	GB/T5783
10	00774000801600000	Bundle bracket	1	
11	1040301515	Washer 8-200HV	5	GB/T97.1
12	1040004590	Bolt M8×14-8.8	3	GB/T5783
13	1040004032	Bolt	4	
14	1040303581	Washer	4	
15	02564400800001060	Pipeline bracket	1	
16	00773400820001010	Rotation lock pin	1	
17	02564400810200001	Turntable weldment	1	
18	1040104087	Screw	1	
19	1040002555	Bolt M6×16-A2-70	2	GB/T5783
20	1040303579	Washer	2	
21	00773400800001521	Rotary limit bracket	1	
22	00773700800001610	Spacer	2	
23	1040200503	NutM8-8	2	GB/T889.1
24	00773500800401013	Bending plate I	1	
25	00773500800401021	Hose seat	1	
26	00773500800401032	Bending plate II	1	
27	1040000135	Bolt M8×55-8.8	2	GB/T5783
28	1040302489	Washer 10-200HV	2	GB/T97.1
29	1040004033	Bolt M10×25-10.9	2	GB/T5783
30	02564400800001050	Adjustable spacer	2	
31	02564400400001120	Guide block	2	
32	1040003252	Hexagon socket cap screw M8×20-12.9	4	GB/T70.1

Turntable 0256440083000000

零件图

TURNTABLE

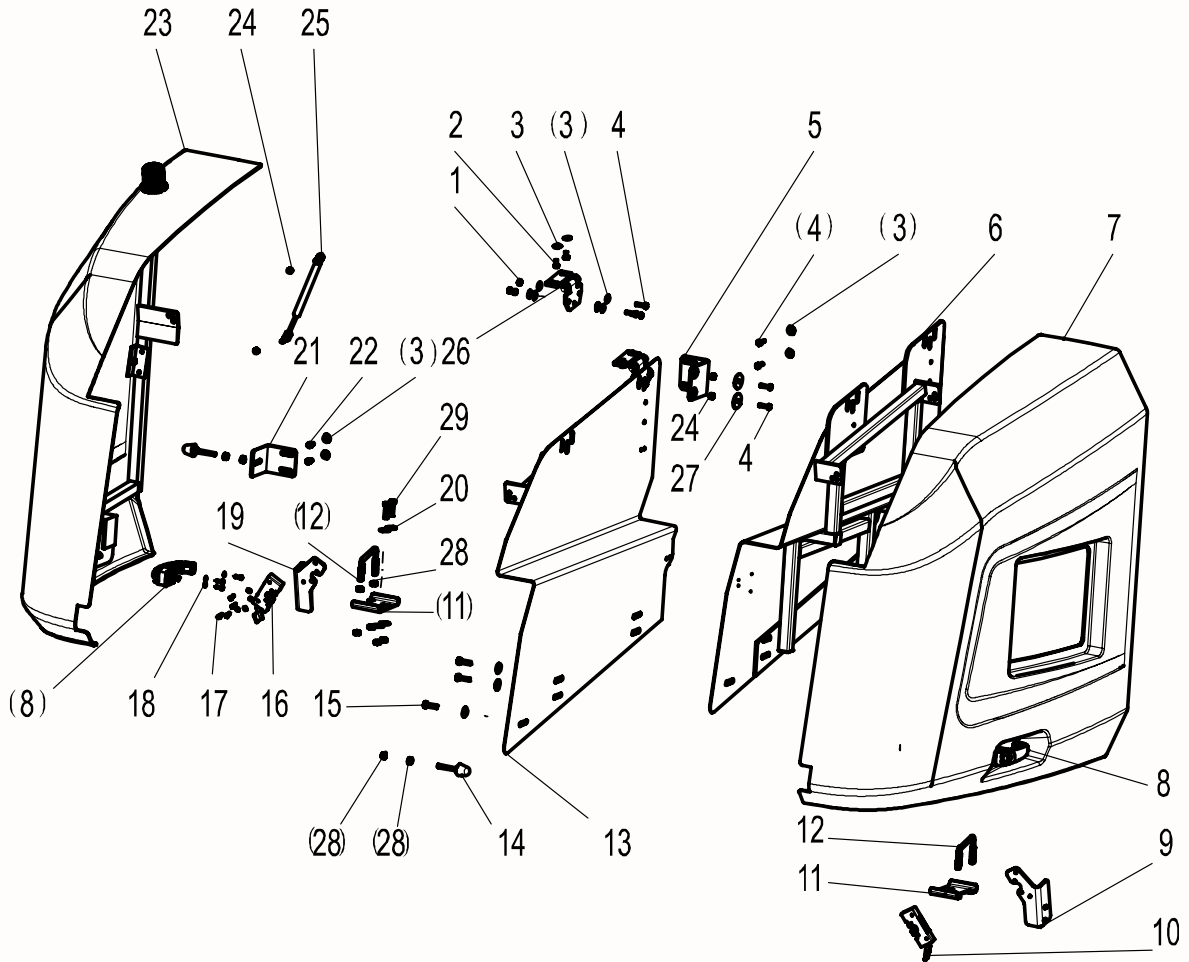


Turntable 02564400830000000

No.	Material No.	Item and Spec	Qty	Note
33	00773400410001230	Stop pin	3	
34	1040006550	Bolt	3	
35	02564400800001020	Axle I	2	
36	02564400800001030	Axle II	1	
37	1089900652	Sealing strip	1	

Hood 0256440111000000

零件图

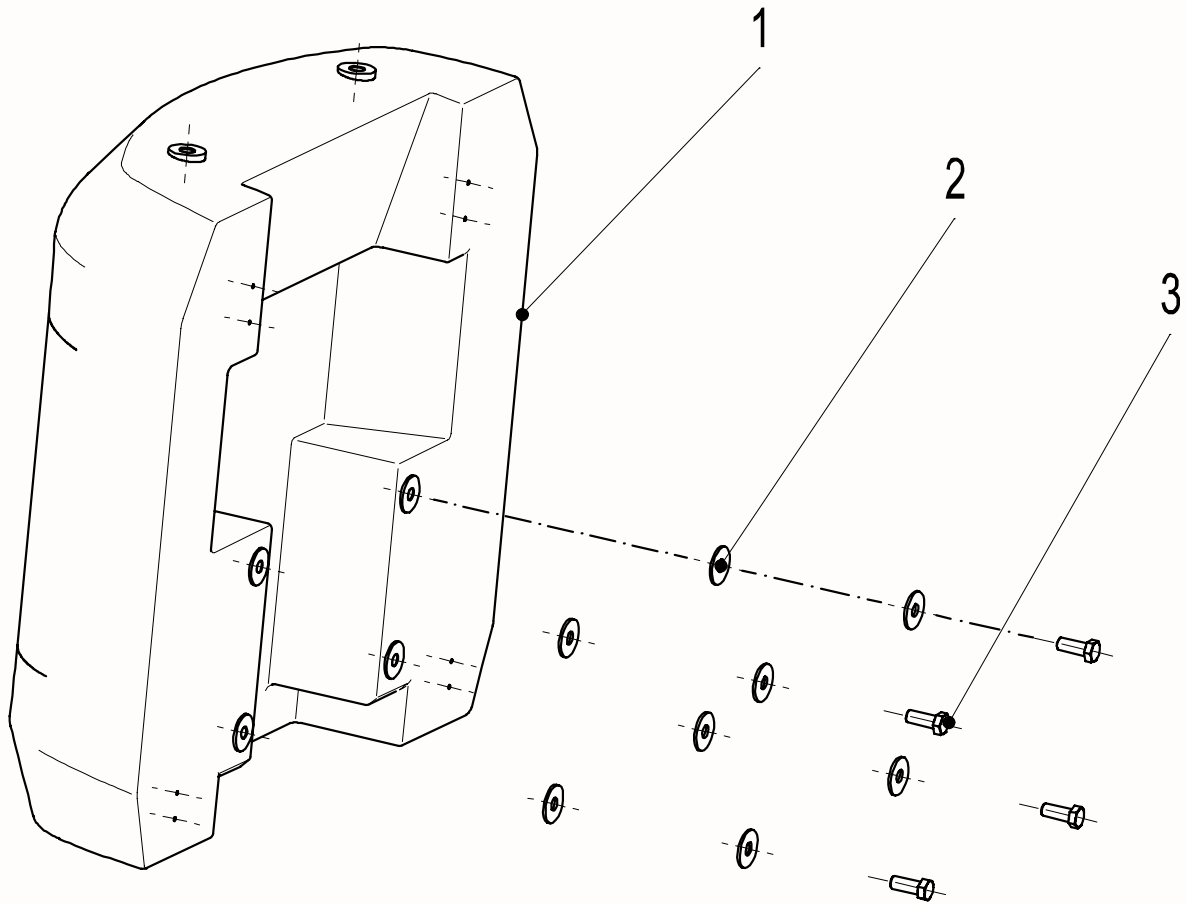


TURNABLE

Hood 0256440111000000

No.	Material No.	Item and Spec	Qty	Note
1	1040201089	NutM8-8	16	GB/T6170
2	1040004517	Bolt M8×16-8.8	8	GB/T5783
3	1040302480	Washer 8-200HV	40	GB/T96.1
4	1040004520	Bolt M8×30-8.8	20	GB/T5783
5	00773400820001120	Strengthen bending plate	2	
6	02564401101200001	Right side dam-board	1	
7	02564401110400000	Right hood	1	
8	1100700163	Door handle	2	
9	00773401110001033	Right lock seat	1	
10	1109900765	Hydraulic door lock	1	
11	00773401110201012	Lock plate	2	
12	00773401110201021	Round rod	2	
13	02564401101000001	Left side dam-board	1	
c	1040004678	Doorstop bolt	4	
15	1040002435	Bolt M10×35-8.8	10	GB/T5783
16	1109900766	Battery door lock	1	
17	1040100105	Screw M6×25-8.8	14	GB/T70.1
18	1040300771	Washer 6-200HV	14	GB/T97.1
19	00773401110001013	Left lock seat	1	
20	1040302512	Washer 10-200HV	18	GB/T96.1
21	00771201100001010	Mounting bracket	2	
22	1040004518	Bolt M8×20-8.8	4	GB/T5783
23	02564401110200000	Left hood	1	
24	1040200503	Nut M8-8	12	GB/T889.1
25	1110100355	Gas spring	4	
26	00773401100700000	Hinge	4	
27	00773400820001130	Washer	4	
28	1040200113	Nut M10-8	20	GB/T6170
29	1040002463	Bolt M10×40-8.8	4	GB/T5782
30	1040301515	Washer 8-200HV	4	GB/T97.1

Counterweight 0256440101000000



TURNTABLE

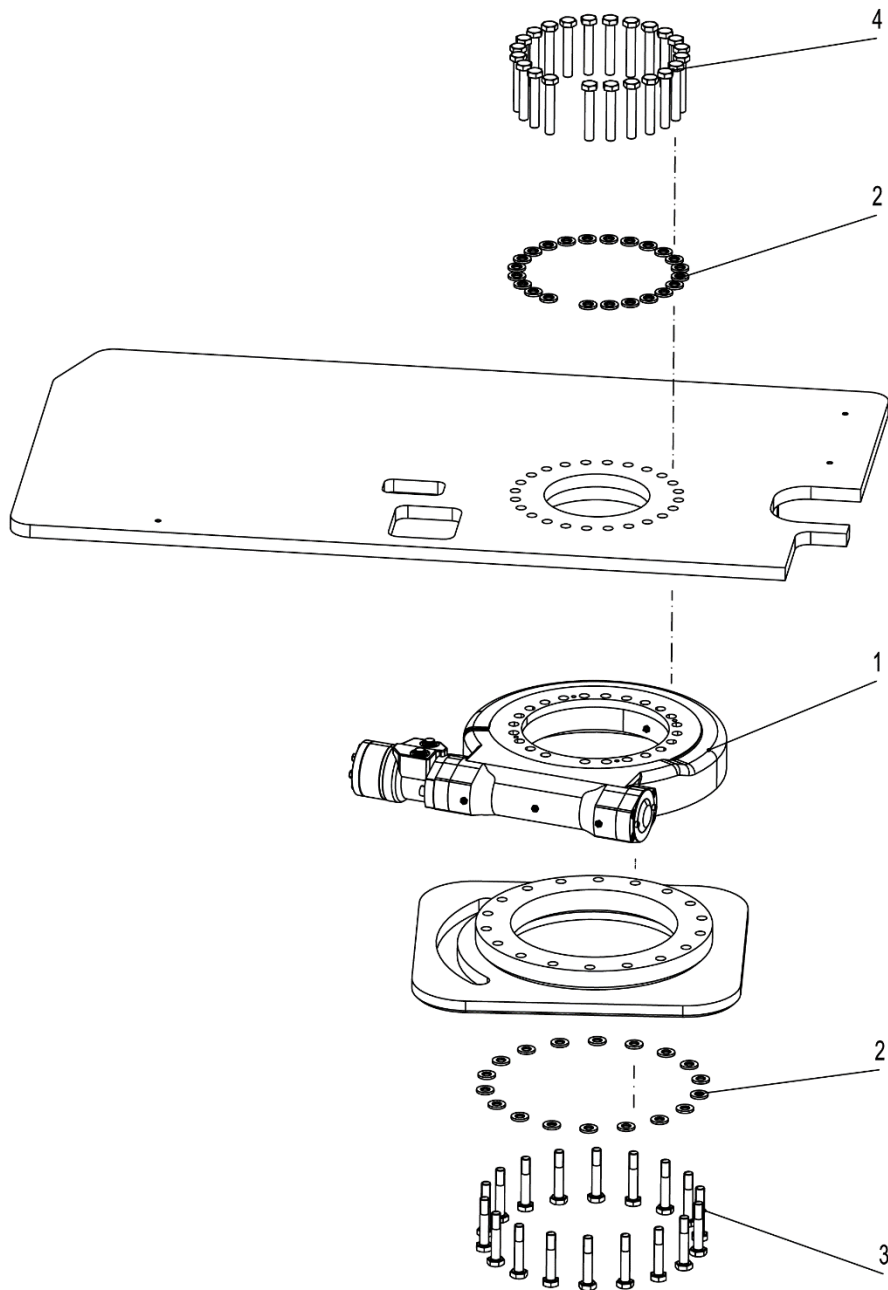
Counterweight 02564401010000000

No.	Material No.	Item and Spec	Qty	Note
1	02564401000001023	Counterweight	1	
2	1040303520	Washer	8	
3	1040004613	Bolt M24×60-10.9	4	GB/T5782

Rotary Mechanism 0077340090000000

回转支承

TURNTABLE



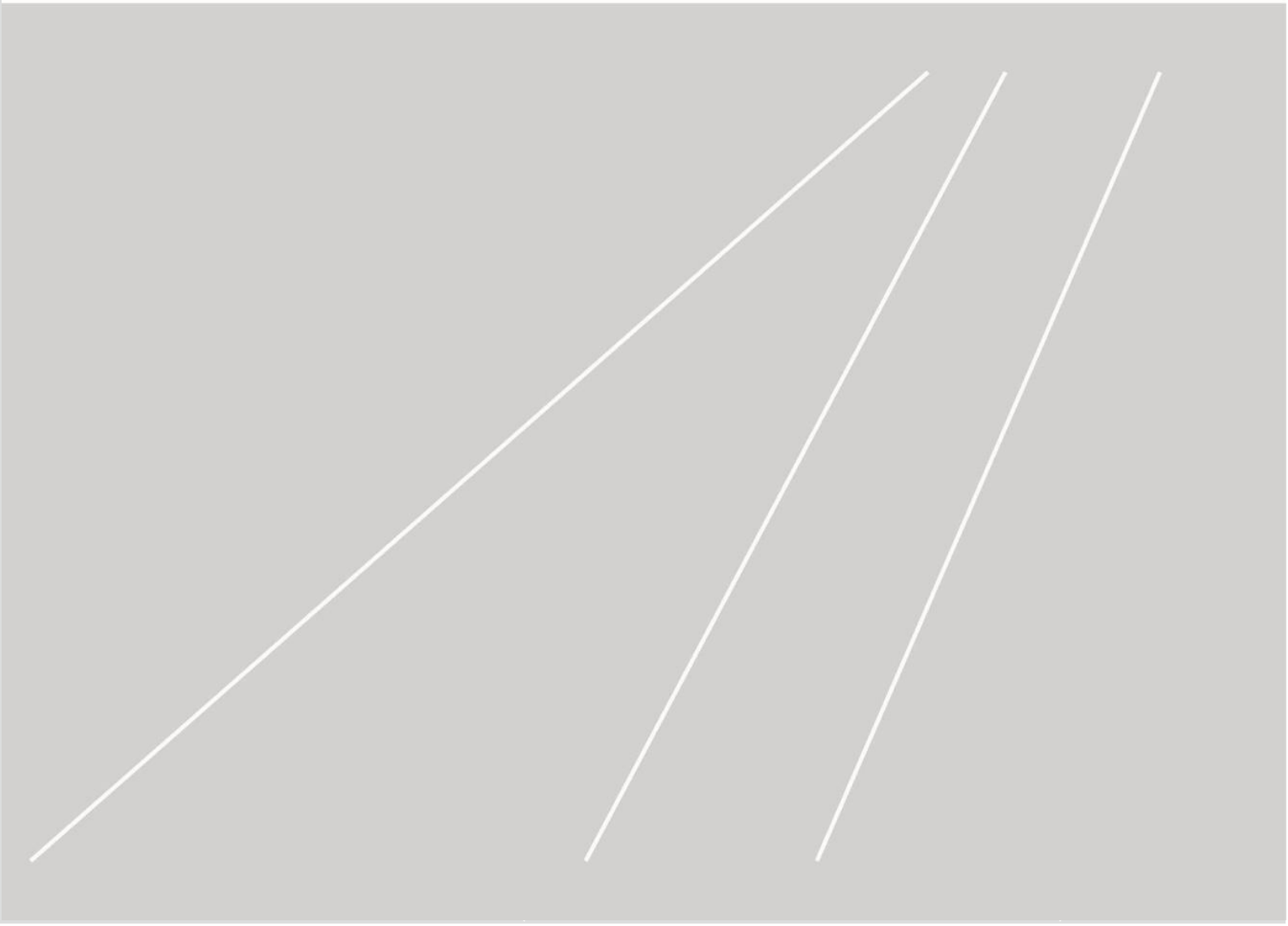
Rotary Mechanism 00773400900000000

No.	Material No.	Item and Spec	Qty	Note
1	1030202173	Rotary reducer	1	
2	1040302817	Washer 16-DKL	41	GB/T1230
3	1040004648	Bolt M16×90-10.9	18	GB/T1228
4	1040005896	Bolt	23	

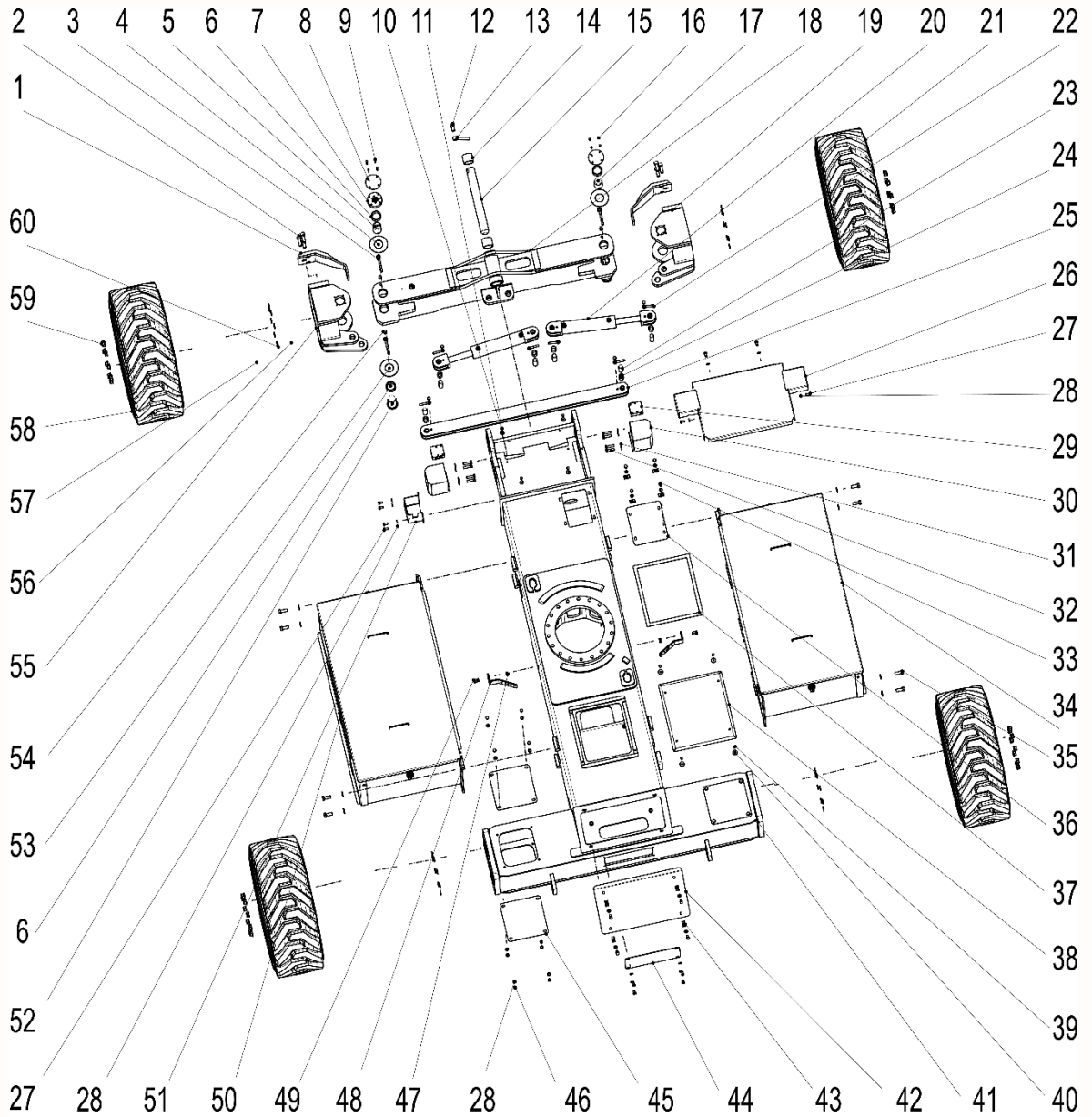
ZOOMLION

Parts Manual

Section 4 Chassis



Chassis 0256440282000000

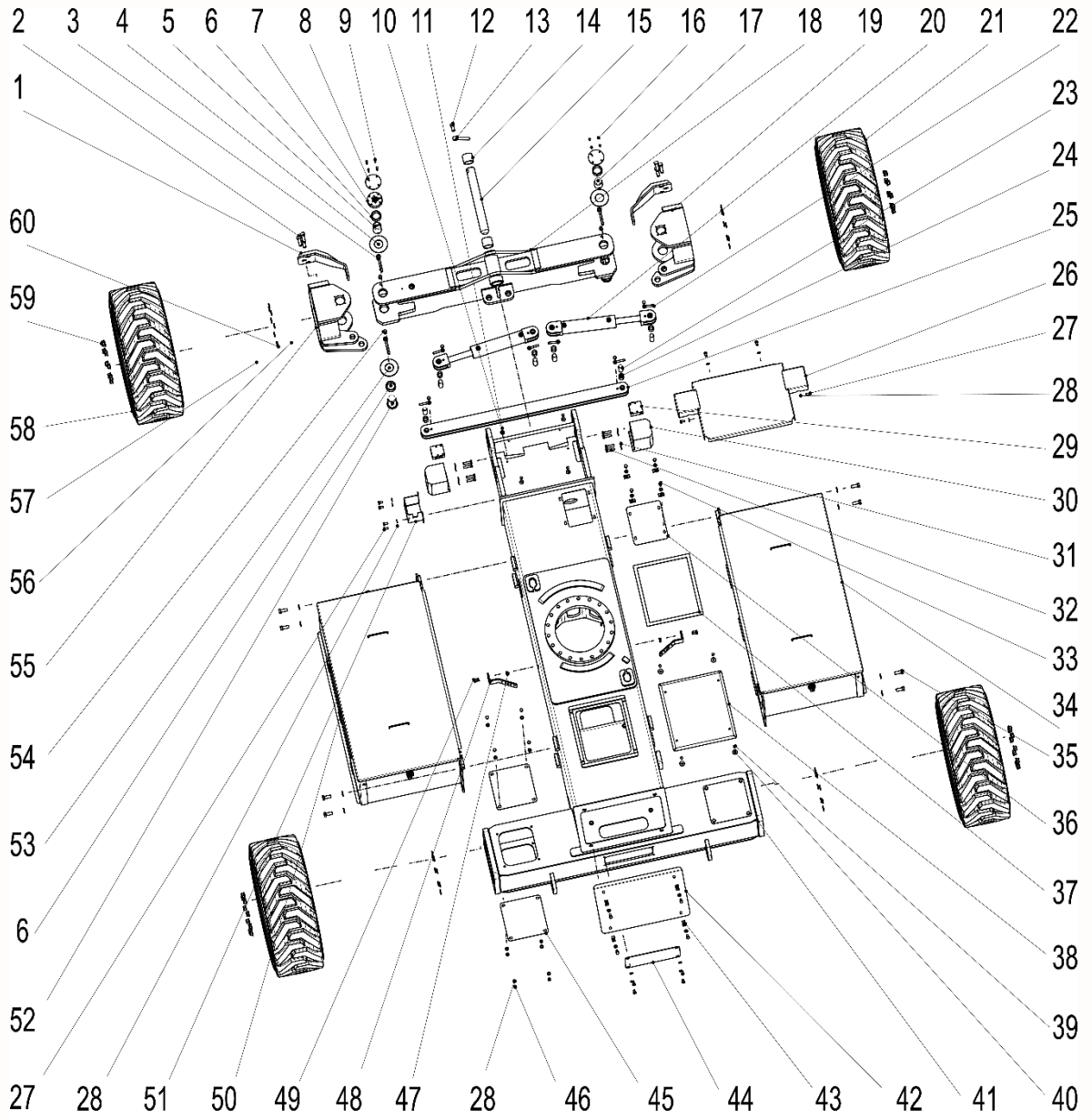


CHASSIS

Chassis 0256440282000000

No.	Material No.	Item and Spec	Qty	Note
1	00773702803600000	Motor protection plate	2	
2	1040102055	Screw M16×45-10.9-DKL	6	GB/T70.1
3	00773400200001070	Lock pin	4	
4	00773702800001030	Steering knuckle - upper wear pad	2	
5	00773702800001021	Pin	1	
6	00773700400001130	Bearing	4	
7	02564402802000000	Angle sensor mounting	1	
8	00773702800001520	Cover plate	2	
9	1040001715	Bolt M6×45-A2-70	4	GB/T5783
10	1040302480	Washer 8-200HV	8	GB/T96.1
11	1040004518	Bolt M8×20-8.8	8	GB/T5783
12	1040002445	Bolt M16×35-8.8	1	GB/T5783
13	00773400400001250	Lock pin	1	
14	00773402810001061	Pin I	1	
15	00773402800001070	Bearing	2	
16	1040001631	Bolt M6×20-A2-70	4	GB/T5783
17	00773702800001020	Pin	1	
18	02564402800400000	Front axle weldment	1	
19	00773702800800001	Steering knuckle I	1	
20	02564402801200000	Steering cylinder	2	
21	1030800696	Tire	2	
22	00771600301001250	Lock pin	6	
23	00773702800001340	Pin VI	6	
24	00773402810001260	Bearing	6	
25	02564402802400000	Steering pull rod	1	
26	02564402801400000	Frame – front cover plate weldment	1	
27	1040002433	Bolt M10×20-8.8	12	GB/T5783
28	1040302489	Washer 10-200HV	36	GB/T97.1
29	1010307371	Float balance valve	2	
30	02564402802200000	Float cylinder	2	
31	1040302490	Washer 12-200HV	8	GB/T97.1
32	1040004644	Bolt	8	GB/T5783
33	1040002434	Bolt M10×25-8.8	8	GB/T5783

Chassis 0256440282000000

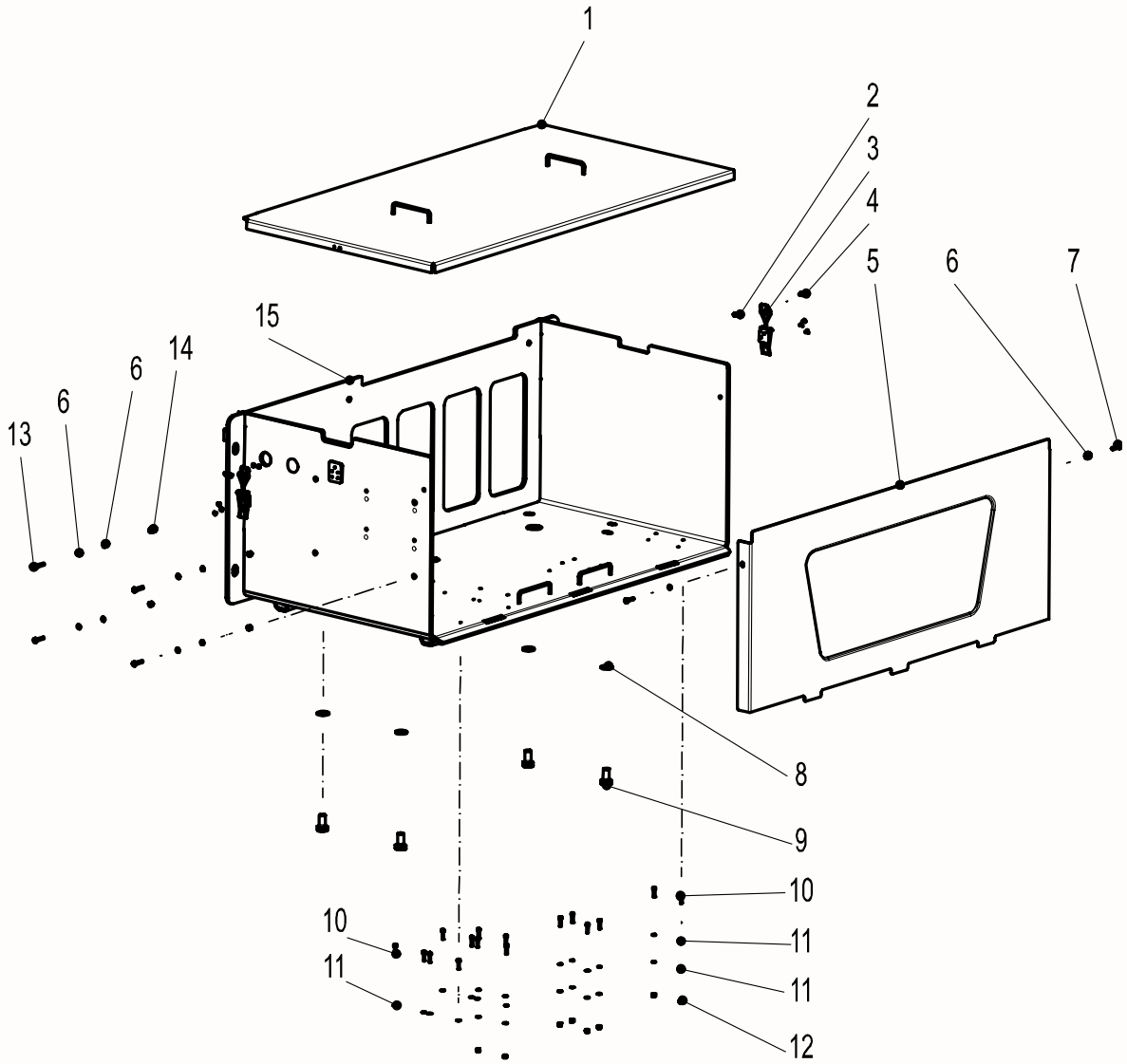


Chassis 0256440282000000

No.	Material No.	Item and Spec	Qty	Note
34	02564402820400000	Right tank body	1	
35	1040002446	Bolt M16×40-8.8	8	GB/T5783
36	02564402800001030	Valve cover plate	1	
37	02564402800001180	Sponge bar	1	
38	02564402800001161	Frame – Rear cover plate	1	
39	1040004590	Bolt M8×14-8.8	4	GB/T5783
40	1040302512	Washer 10-200HV	4	GB/T96.1
41	02564402800200000	Frame weldment	1	
42	02564402800001090	Driver cover plate	1	
43	1040201860	Nut M10	8	QC/T608
44	02564402800001040	Base plate	1	
45	02564402800001120	Rear axle - Cover plate	4	
46	1040004646	Bolt M10×15-8.8	20	GB/T5783
47	1040200503	Nut M8-8	4	GB/T889.1
48	02564402800001010	Chassis valve block mounting plate I	2	
49	1040004519	Bolt M8×25-8.8	4	GB/T5783
50	02564402820200000	Left body tank	1	
51	02564402800001100	Take up box	1	
52	00773702800001150	PinI	2	
53	00773702800001200	Steering knuckle – Lower wear plate	2	
54	1040004511	Bolt M12×30-8.8	4	GB/T5783
55	00773702801200002	Steering knuckle II	1	
56	1040103166	Screw 5/8-11UNC×55-10.9	32	ANSIB18.3
57	1030202344	Reducer motor assembly	4	
58	1030800695	Tire	2	
59	1040202297	Nut M16×1.5-10(Spiralock)	36	GB/T6177.2
60	1040302492	Washer 16-200HV	40	GB/T97.1

Left Tank Body 02564402820200000

零件图



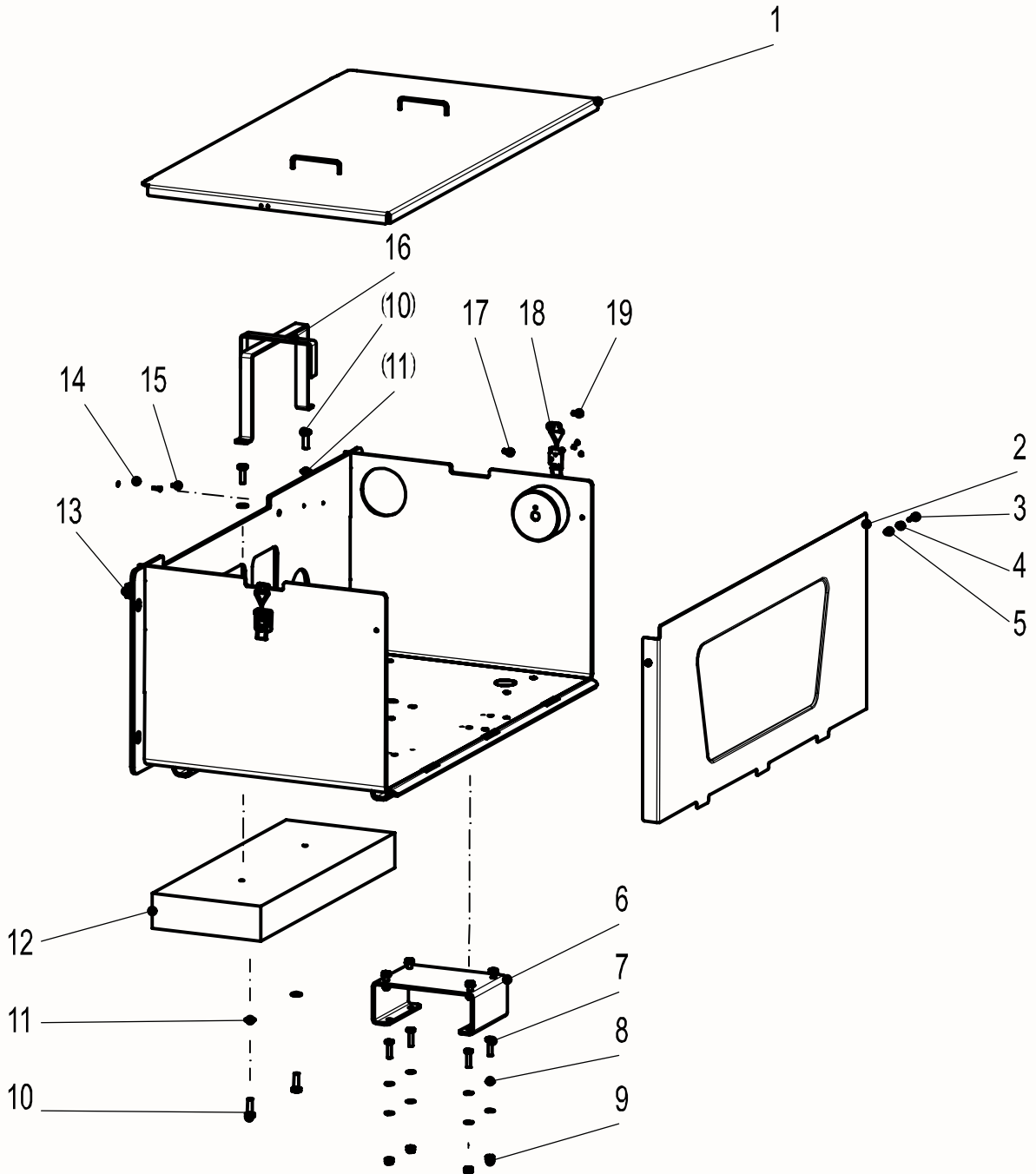
CHASSIS

Left Tank Body 02564402820200000

No.	Material No.	Item and Spec	Qty	Note
1	02564402800620000	Battery tank – upper cover plate weldment	1	
2	1040201772	Nut M4-A2-70	4	GB/T6170
3	1101000180	Lock catch	2	
4	1040102429	Screw	10	
5	02564402800630000	Battery box front baffle weldment	1	
6	1040300771	Washer 6-200HV	10	GB/T97.1
7	1040001640	Bolt M6×25-A2-70	2	GB/T5783
8	1040301016	Washer 16-300HV	4	GB/T97.1
9	1040004570	Bolt M16×30-8.8	4	GB/T5783
10	1040104081	Screw	16	
11	1040300514	Washer 5-200HV	24	GB/T97.1
12	1040202853	Nut	8	
13	1040002178	Bolt M6×30-A2-70	4	GB/T5783
14	1040202854	Nut	6	
15	02564402820210000	Left box body weldment	1	

Right Tank Body 02564402820400000

總裝說明



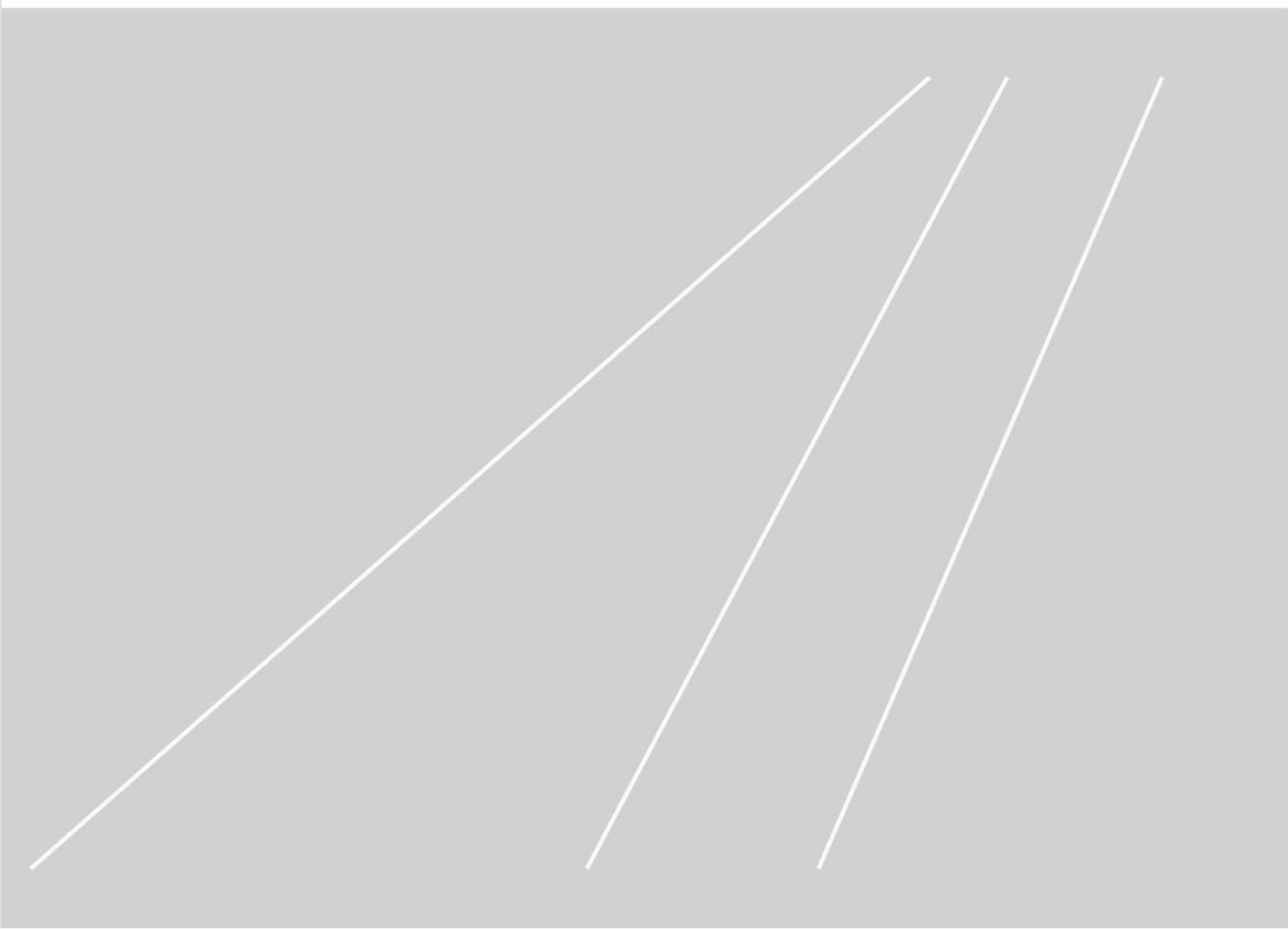
Right Tank Body 02564402820400000

No.	Material No.	Item and Spec	Qty	Note
1	02564402800620000	Battery box – Upper cover plate weldment	1	
2	02564402800630000	Battery box front baffle weldment	1	
3	1040001640	Bolt M6×25-A2-70	2	GB/T5783
4	1040300771	Washer 6-200HV	2	GB/T97.1
5	1040202854	Nut	2	
6	02564402800801020	Motor bracket II	1	
7	1040007536	Bolt	8	
8	1040302489	Washer 10-200HV	16	GB/T97.1
9	1040202856	Nut	8	
10	1040004029	Bolt M12×35-10.9	4	GB/T5783
11	1040302490	Washer 12-200HV	4	GB/T97.1
12	02564402820401010	Counterweight block	1	
13	02564402820410000	Right tank body weldment	1	
14	1040300514	Washer 5-200HV	2	GB/T97.1
15	1040001122	Bolt M5×16-8.8	2	GB/T5783
16	02564402820420000	Battery fixed bracket	1	
17	1040201772	Nut M4-A2-70	4	GB/T6170
18	1101000180	Lock catch	2	
19	1040102429	Screw	10	

ZOOMLION

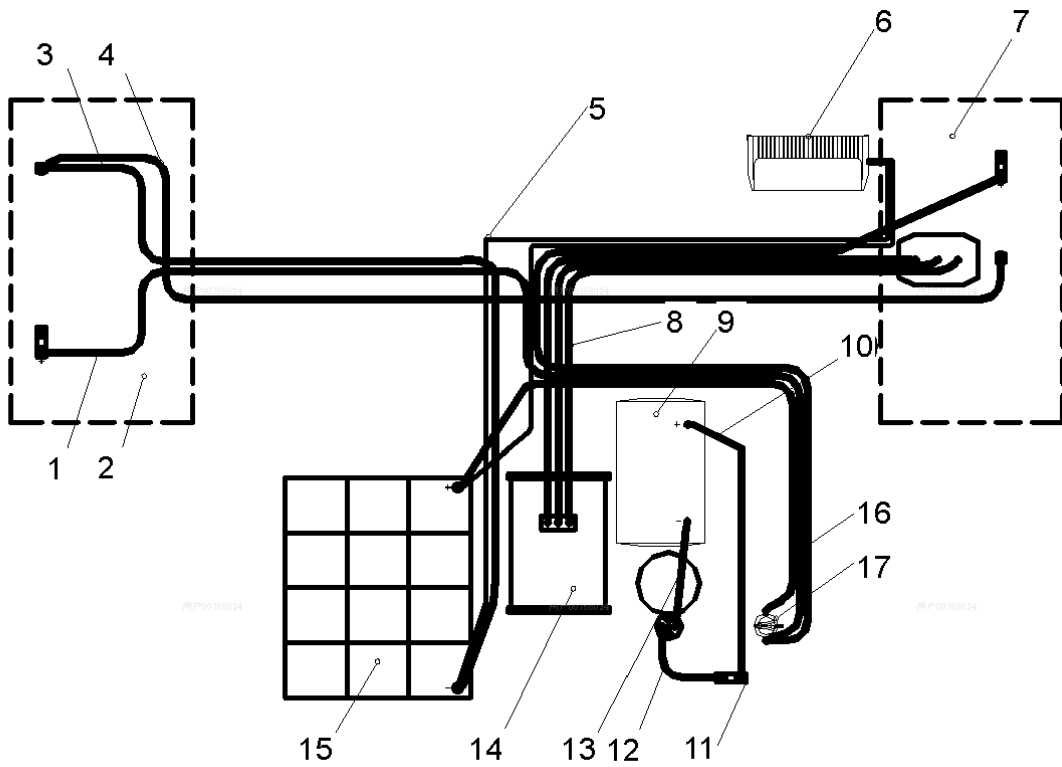
Parts Manual

Section 5 Power System



Power Line 02564406218230050

POWER
SYSTEM



POWER
SYSTEM

Power Line 02564406218230050

No.	Material No.	Item and Spec	Qty	Note
1	02564406200234031	Main power switch and positive pole of rear axle panel connection	1	
2	1029908948	Driver rear axle assembly	1	
3	02564406218034020	Negative electrode of lithium-ion battery and the negative electrode of rear axle group plate connection	1	
4	02564406218034090	Negative pole of rear axle group disk and negative pole of front axle group disk	1	
5	/	Charger charging cable	1	
6	1020202146	On-board charger	1	
7	1029908947	Driver front axle assembly	1	
8	02564406200234130	No. 5 driver and functional pump motor connection	3	
9	1020999067	Battery	1	
10	02564406218034060	Emergency battery to the emergency switch connection	1	
11	1020604246	Fuse holder	1	
12	1020604928	Fuse	1	
12	02564406218034070	Emergency fuse and auxiliary pump relay connection	1	
13	02564406218034080	Emergency battery negative and auxiliary pump negative connection	1	
14	1020099043	Motor	1	
15	1020999194	Lithium-ion battery	1	
16	02564406218034010	Lithium battery positive pole and power main switch connection	1	
17	1029900667	Power main switch	1	

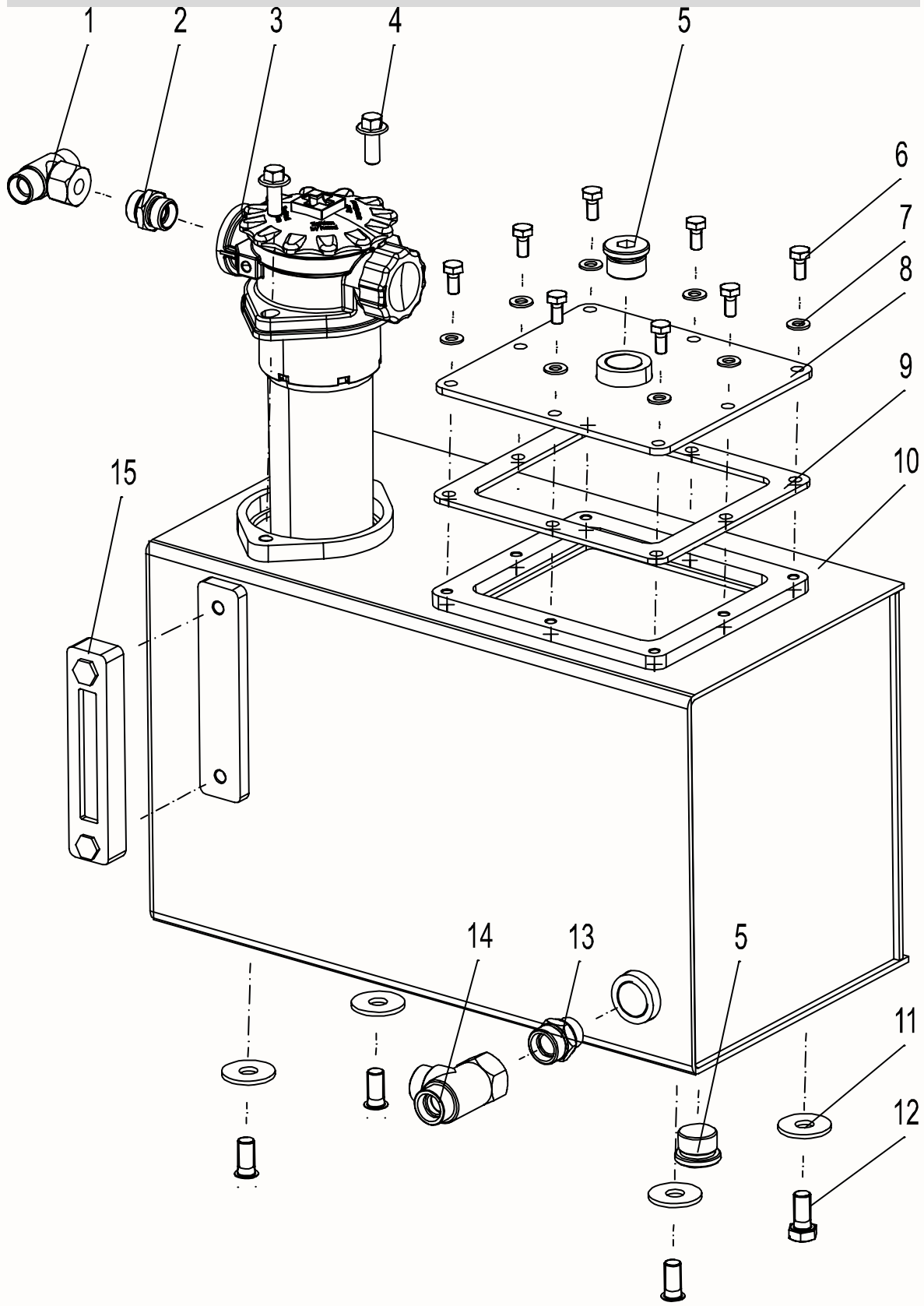
ZOOMLION

Parts Manual

Section 6 Hydraulic System



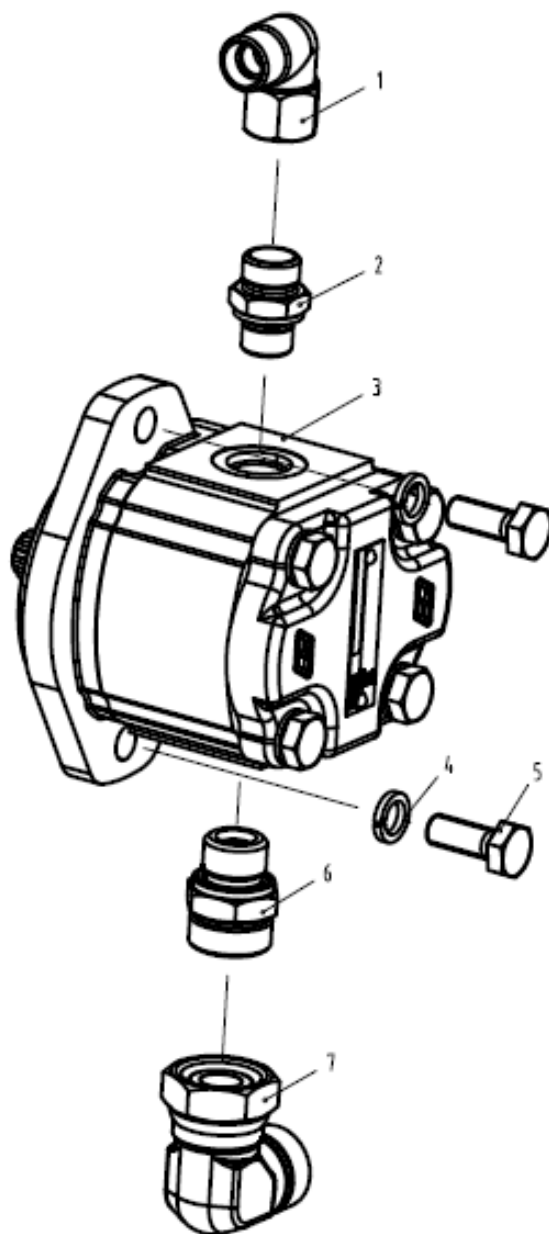
Hydraulic Tank Assembly 02564405200200000



Hydraulic Tank Assembly 02564405200200000

No.	Material No.	Item and Spec	Qty	Note
1	1140101484	Tube to swivel	1	
2	1140107825	Male stud connector	1	
3	1010601202	Return oil filter	1	
4	1040005851	Screw M10×25-8.8	2	GB/T5787
5	1140101628	Plug	2	
6	1040004517	Bolt M8×16-8.8	8	GB/T5783
7	1040301515	Washer 8	8	GB/T97.1
8	02564405200220000	Window cap	1	
9	00773405210230000	Seal plate	1	
10	00773405210210000	Oil tank	1	
11	1040302821	Washer 12	4	GB/T96.1
12	1040002436	Bolt M12×25-8.8	4	GB/T5783
13	1140101466	Male stud connector	1	
14	1140101488	Tube to swivel	1	
15	1019901470	Liquidometer	1	

Hydraulic Pump Assembly 02564405200400000

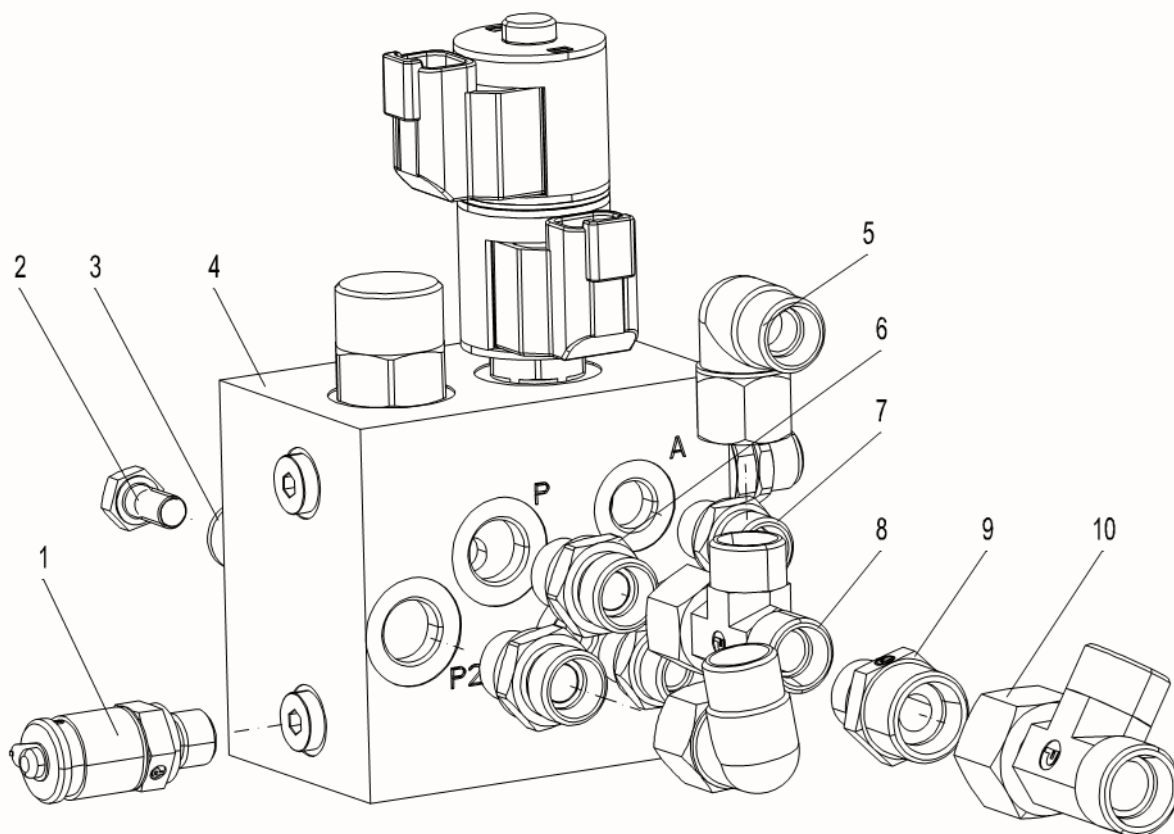


Hydraulic Pump Assembly 02564405200400000

No.	Material No.	Item and Spec	Qty	Note
1	1140101477	Tube to swivel	1	
2	1140114035	Male stud connector	1	
3	1010001904	Gear pump	1	
4	1040301502	Washer 10	2	GB/T93
5	1040002434	Bolt M10×25-8.8	2	GB/T5783
6	1140114034	Male stud connector	1	
7	1140101479	Tube to swivel	1	

Steering Priority Valve Assembly 02564405200400000

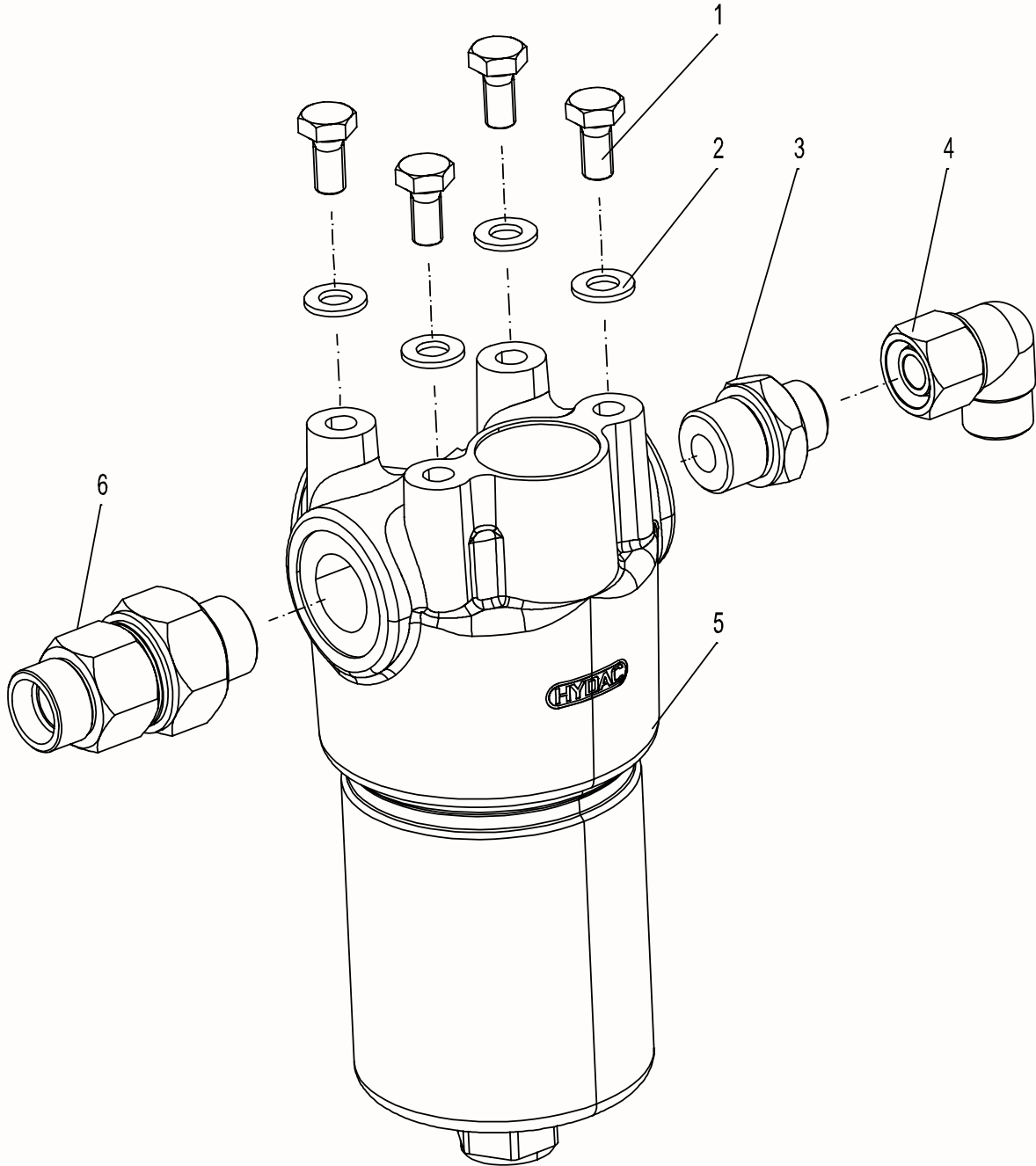
结构示意图



Steering Priority Valve Assembly 02564405200400000

No.	Material No.	Item and Spec	Qty	Note
1	1140114187	Pressure testing joint	1	
2	1040004517	Bolt M8×16-8.8	2	GB/T5783
3	1040301515	Washer 8	2	GB/T97.1
4	1010307351	Steering Priority Valve	1	
5	1140101477	Tube to swivel	2	
6	1140114036	Male stud connector	2	
7	1140101461	Male stud connector	2	
8	1140111291	Tube to swivel	1	
9	1140101465	Male stud connector	1	
10	1140101489	Tube to swivel	1	

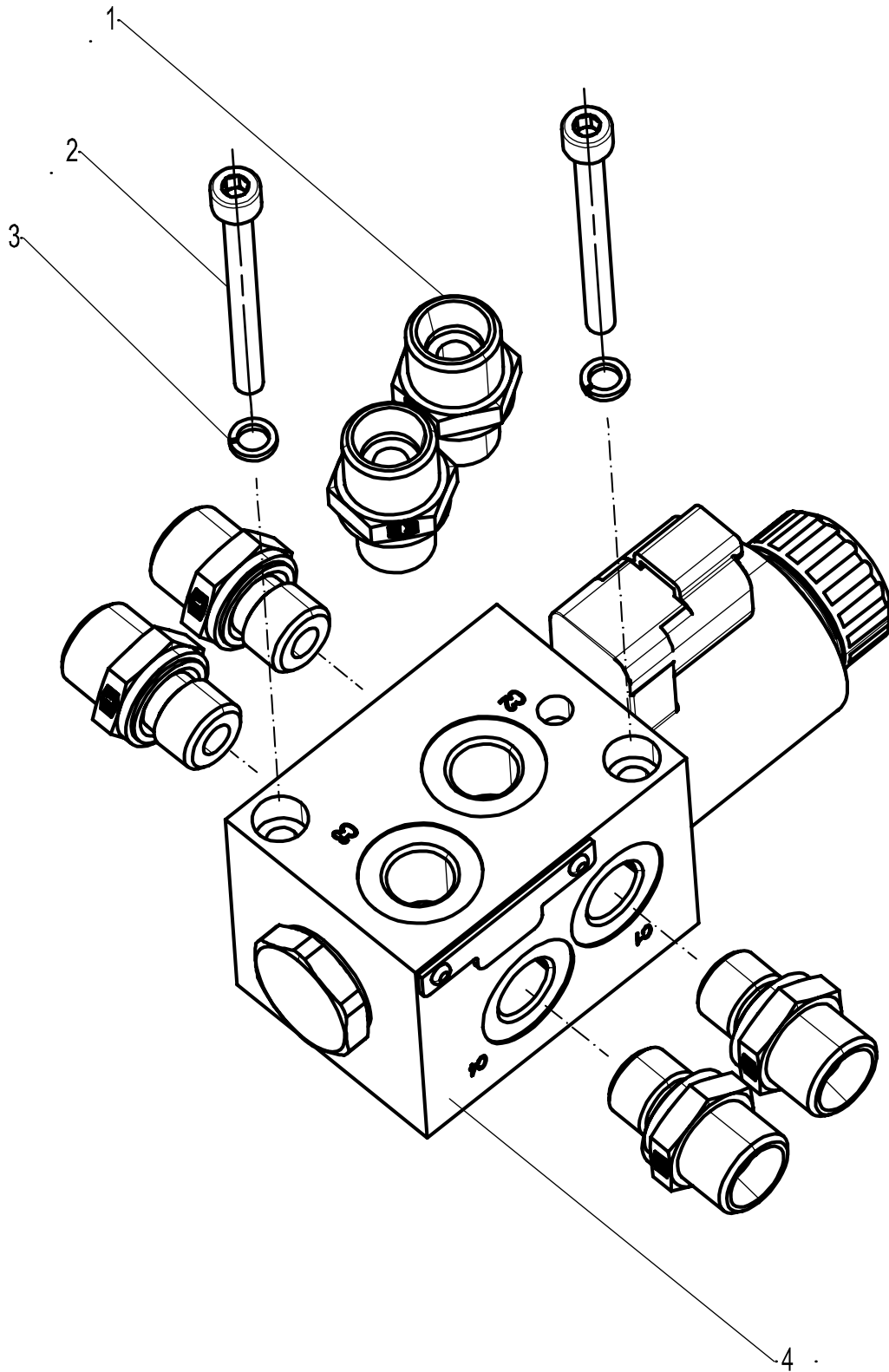
High Pressure Filter Assembly 0256440520100000



High Pressure Filter Assembly 02564405201000000

No.	Material No.	Item and Spec	Qty	Note
1	1040004517	Screw M8×16-8.8	4	GB/T5783
2	1040301515	Washer 8-200HV	4	GB/T97.1
3	1140101463	Male stud connector	1	
4	1140101477	Tube to swivel	1	
5	1010601138	High Pressure Filter	1	
6	1010302829	Check valve	1	

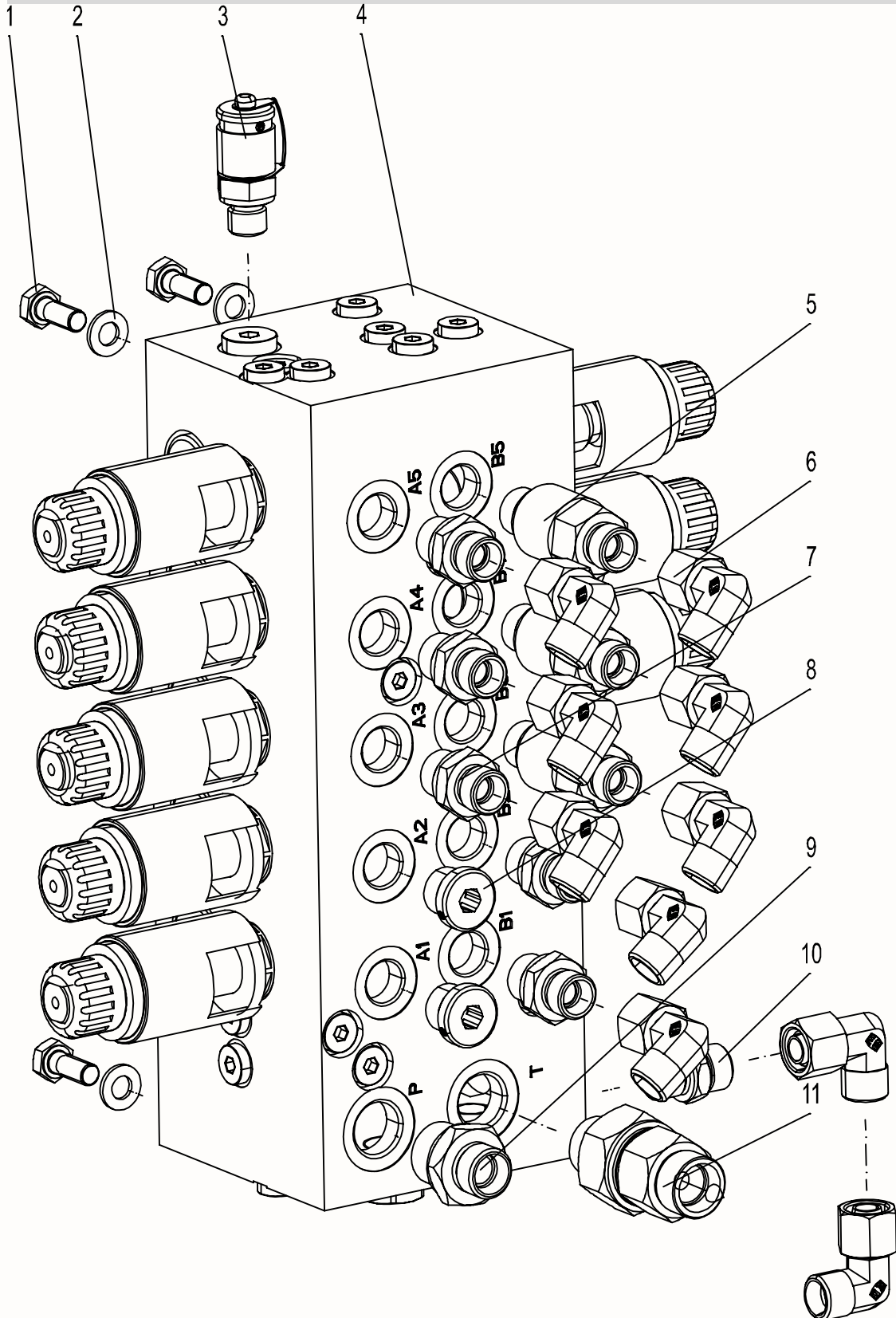
Platform Select Valve Assembly 00773405211200000



Platform Select Valve Assembly 00773405211200000

No.	Material No.	Item and Spec	Qty	Note
1	1040100438	Screw M5×55-8.8	2	GB/T70.1
2	1040300060	Washer 5	2	GB/T93
3	1140101461	Male stud connector	6	
4	1010306016	Platform Select Valve	1	

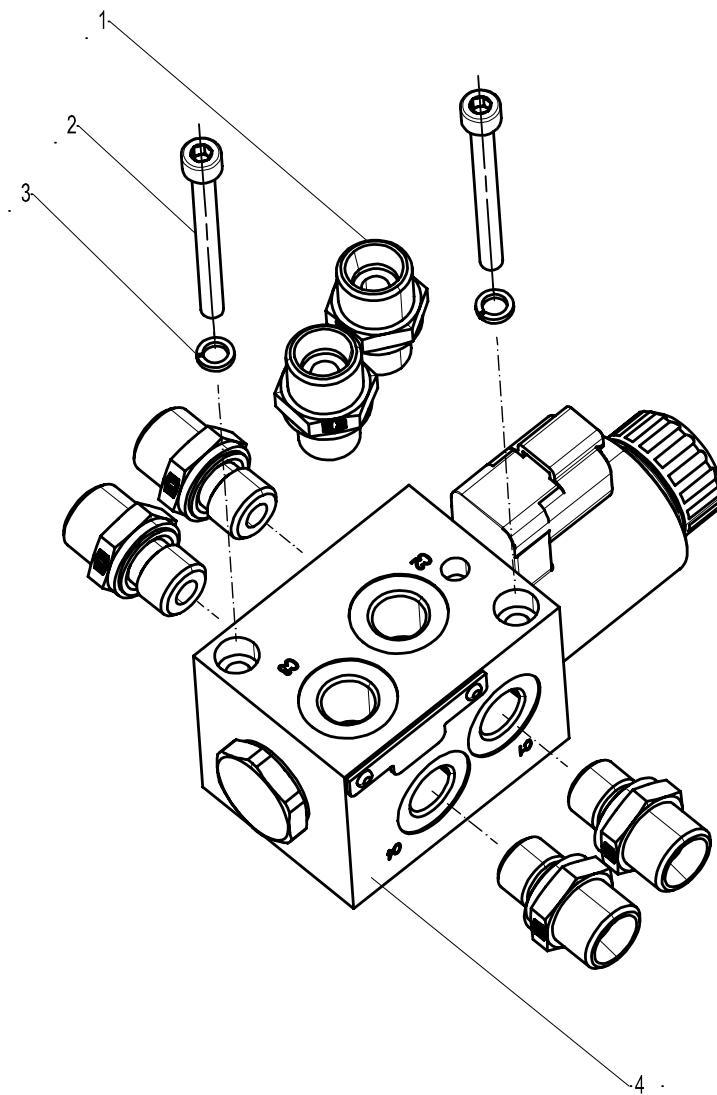
Main Valve Assembly 02564405201600000



Main Valve Assembly 02564405201600000

No.	Material No.	Item and Spec	Qty	Note
1	1040004518	Bolt M8×20-8.8	4	GB/T5783
2	1040301515	Washer 8	4	GB/T97.1
3	1140114187	Pressure testing joint	1	
4	1010308361	Main valve	1	
5	1140114625	Male stud connector	3	
6	1140101476	Tube to swivel	10	
7	1140114040	Male stud connector	3	
8	1140101629	Plug	2	
9	1140101463	Male stud connector	1	
10	1140101461	Male stud connector	1	
11	1010309043	Non return valve	1	

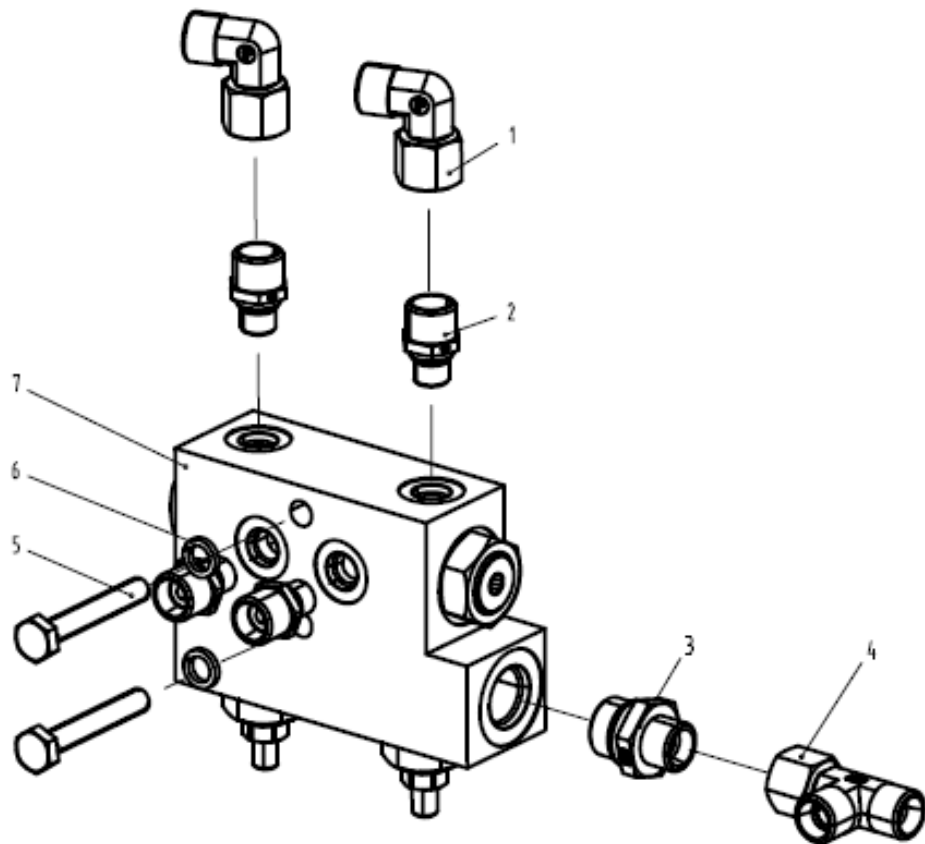
Telescopic Select Valve Assembly 0077340521240000



Telescopic Select Valve Assembly 00773405212400000

No.	Material No.	Item and Spec	Qty	Note
1	1140101461	Male stud connector	6	
2	1040103107	Screw M5×45-8.8	2	GB/T70.1
3	1040300060	Washer 5	2	GB/T93
4	1010306016	Platform Select Valve	1	

Lower Leveling Cylinder CBV Assembly 0077340521280000

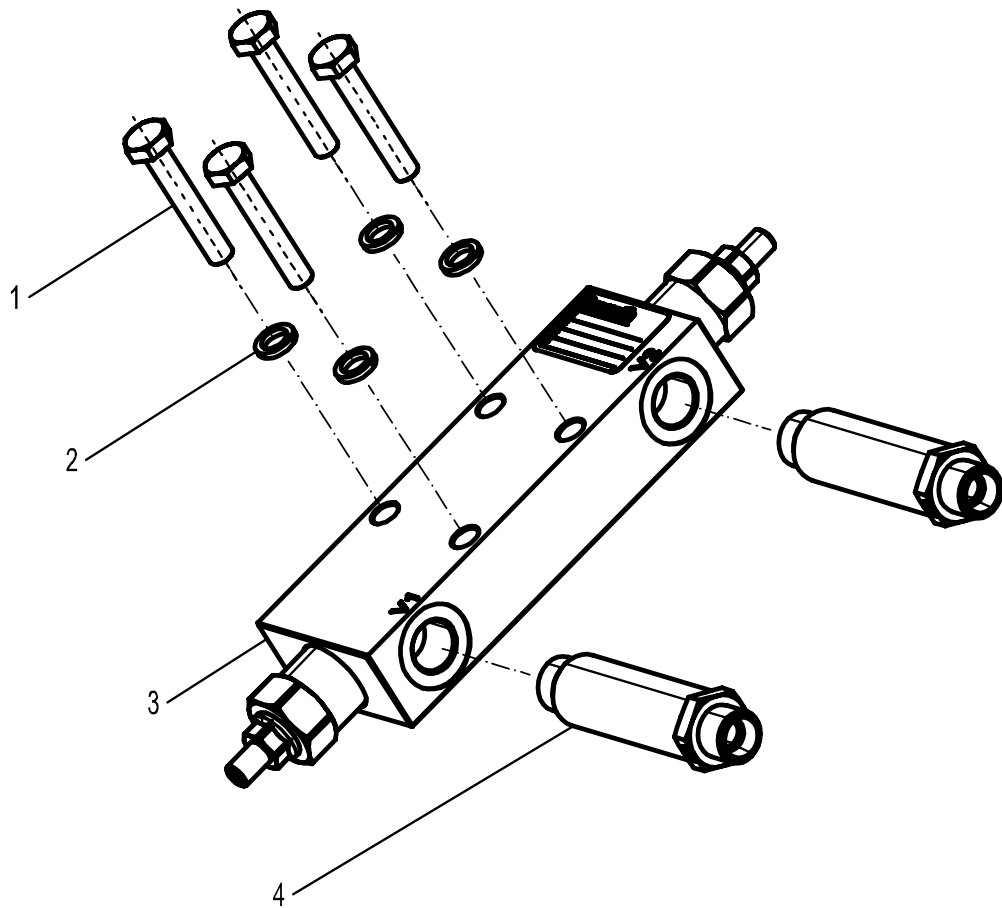


Lower Leveling Cylinder CBV Assembly 00773405212800000

No.	Material No.	Item and Spec	Qty	Note
1	1140101476	Tube to swivel	2	
2	1140112827	Male stud connector	4	
3	1140112820	Male stud connector	1	
4	1140114046	T-junction	1	
5	1040004522	Bolt M8×50-8.8	2	GB/T5783
6	1040301510	Washer 8	2	GB/T93
7	1010306368	Cylinder control valve	1	

Upper Leveling Cylinder CBV Assembly 0077340521300000

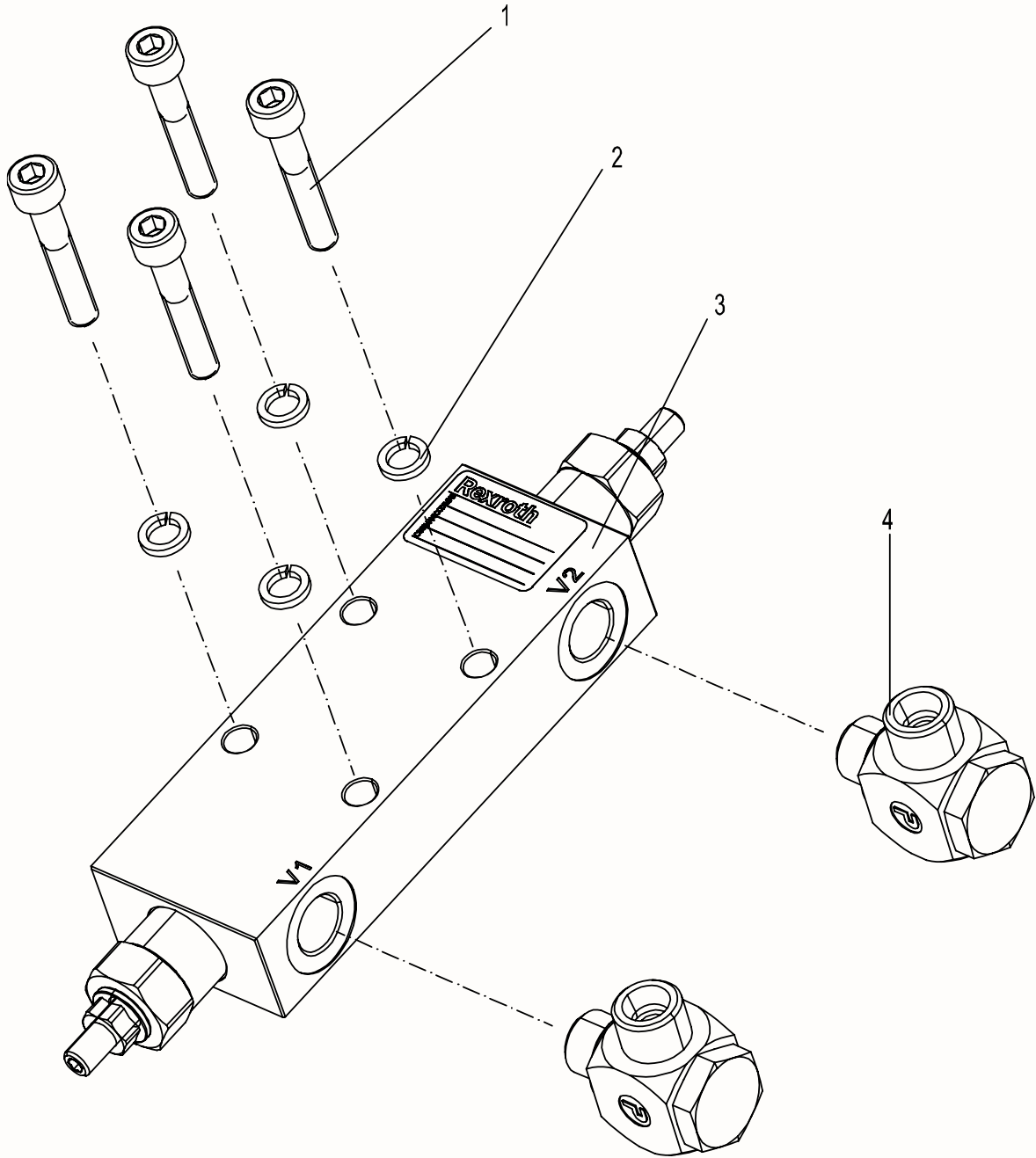
图
号
说
明



Upper Leveling Cylinder CBV Assembly 00773405213000000

No.	Material No.	Item and Spec	Qty	Note
1	1040004521	Bolt M8×45-8.8	4	GB/T5783
2	1040301510	Washer 8	4	GB/T93
3	1010306020	Counterbalance valve	1	
4	1140114624	Male stud connector	2	

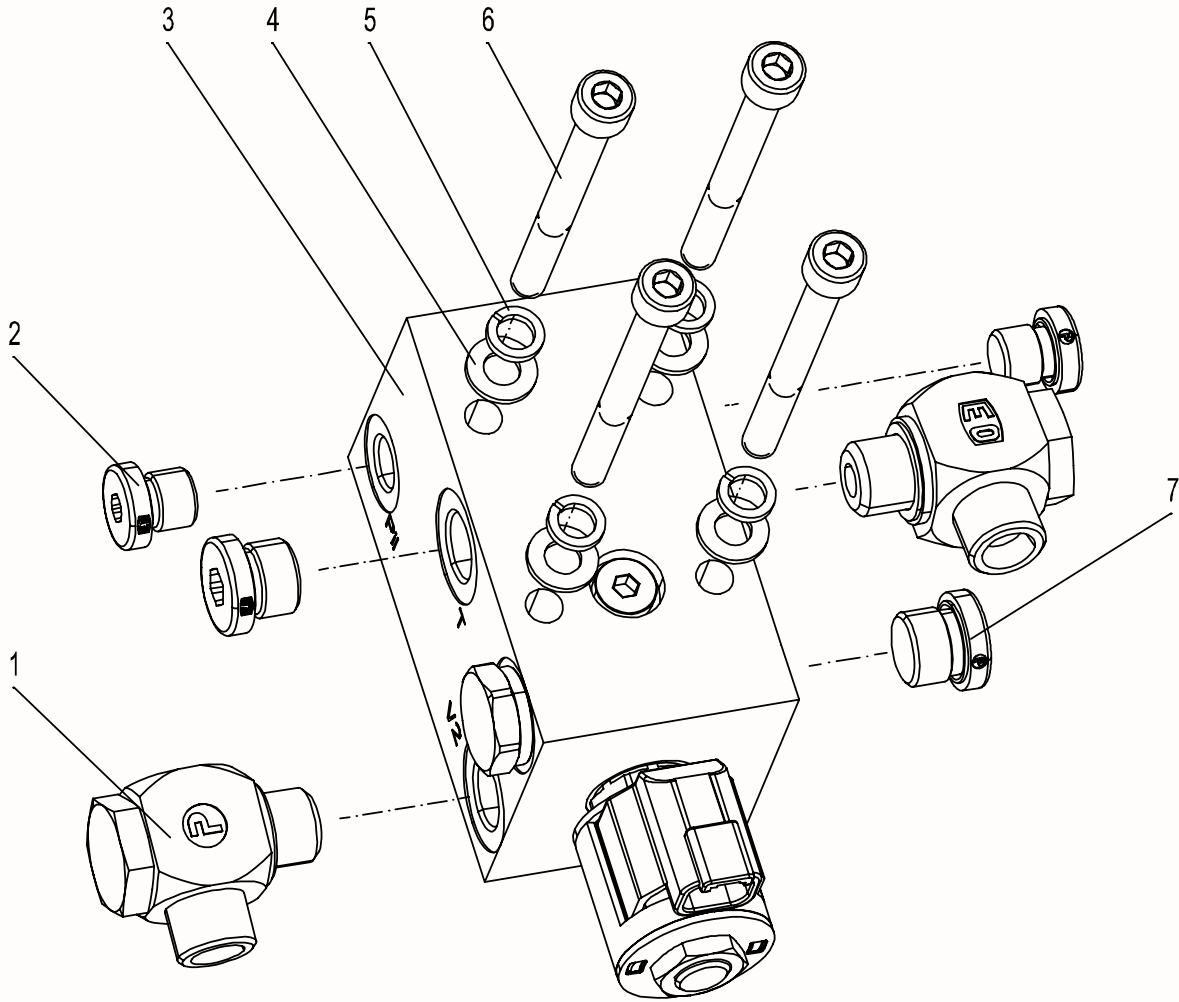
Jib Cylinder CBV Assembly 0077340521320000



Jib Cylinder CBV Assembly 00773405213200000

No.	Material No.	Item and Spec	Qty	Note
1	1040100148	Screw M8×45-8.8	4	GB/T5783
2	1040301510	Washer 8	4	GB/T93
3	1010306020	Counterbalance valve	1	
4	1140114839	Articulating joint	2	

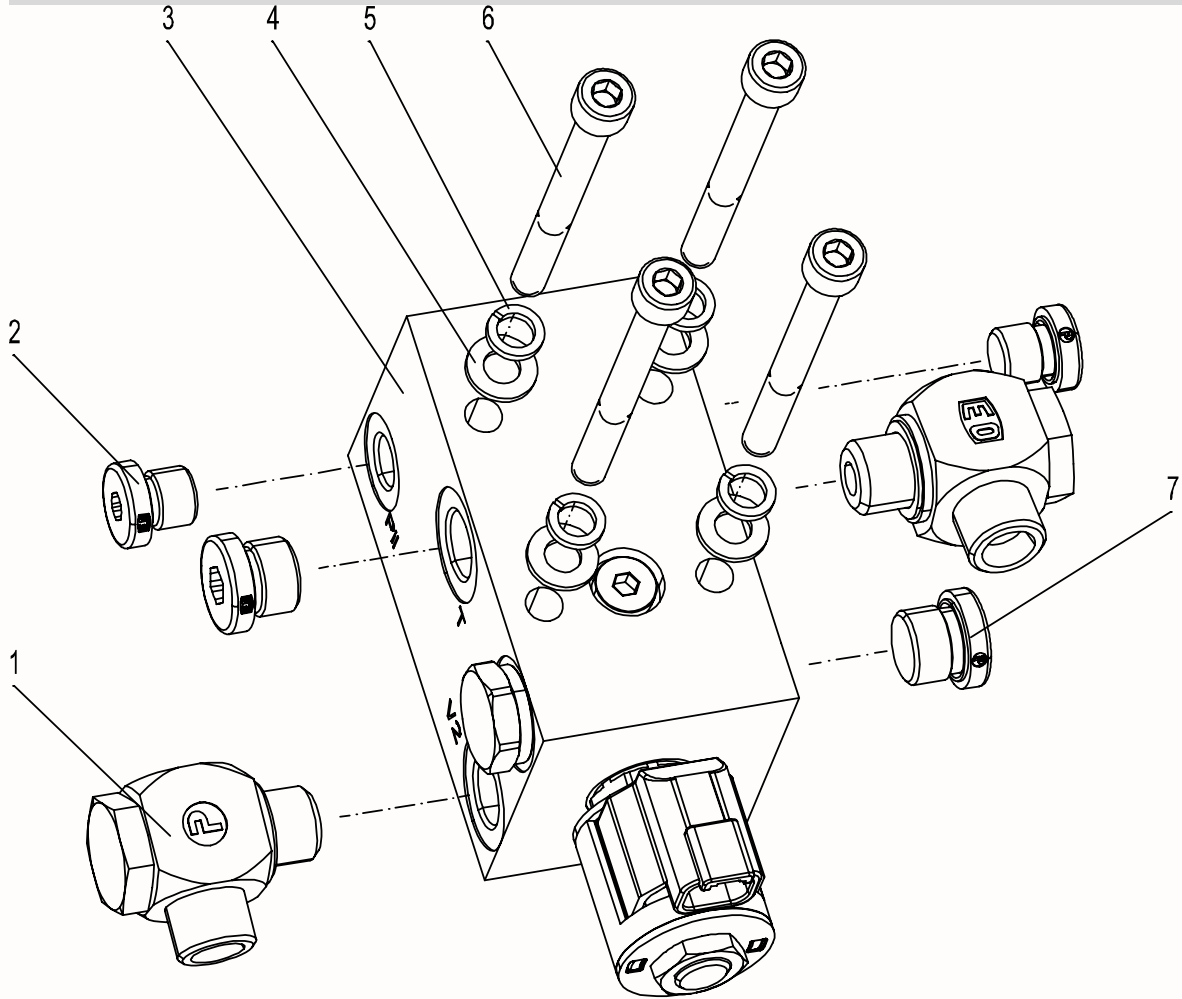
Main Boom Cylinder CBV Assembly 0077340521340000



Main Boom Cylinder CBV Assembly 0077340521340000

No.	Material No.	Item and Spec	Qty	Note
1	1140114839	High pressure articulating joint	2	
2	1019900975	Plug	2	
3	1010307350	Lifting counterbalance valve	1	
4	1040301515	Coil 8	4	GB/T97.1
5	1040301510	Washer 8	4	GB/T93
6	1040102739	Screw M8×60-8.8	4	GB/T70.1
7	1140101629	Plug	2	

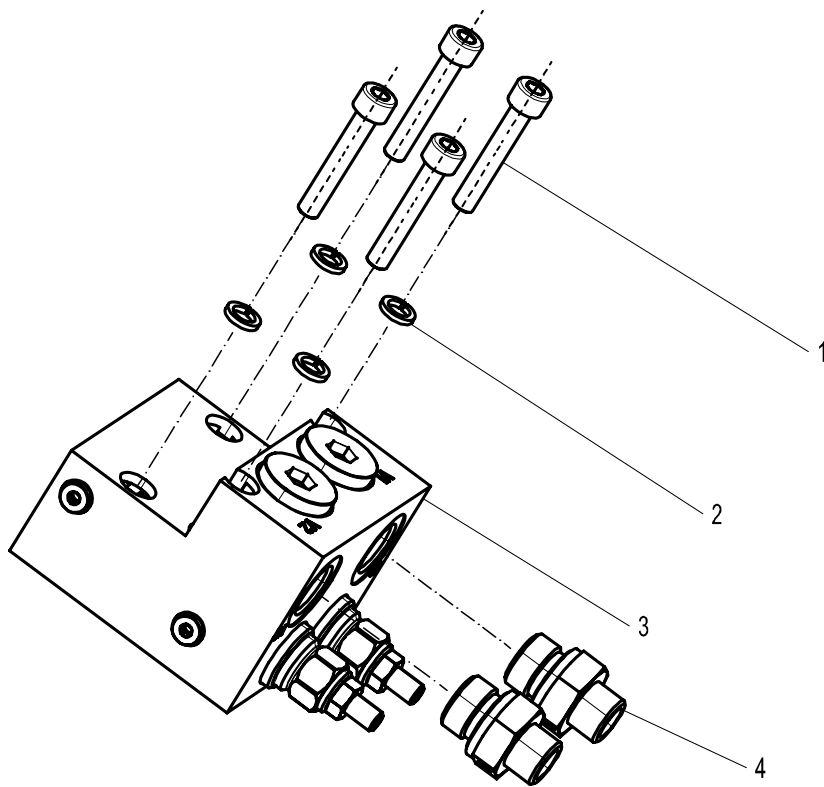
Tower Boom Cylinder CBV Assembly 0077340521360000



Tower Boom Cylinder CBV Assembly 00773405213600000

No.	Material No.	Item and Spec	Qty	Note
1	1140114839	High pressure articulating joint	2	
2	1019900975	Plug	2	
3	1010307350	Lifting balance valve	1	
4	1040301515	Coil 8	4	GB/T97.1
5	1040301510	Washer 8	4	GB/T93
6	1040102739	Screw M8×60-8.8	4	GB/T70.1
7	1140101629	Plug	2	

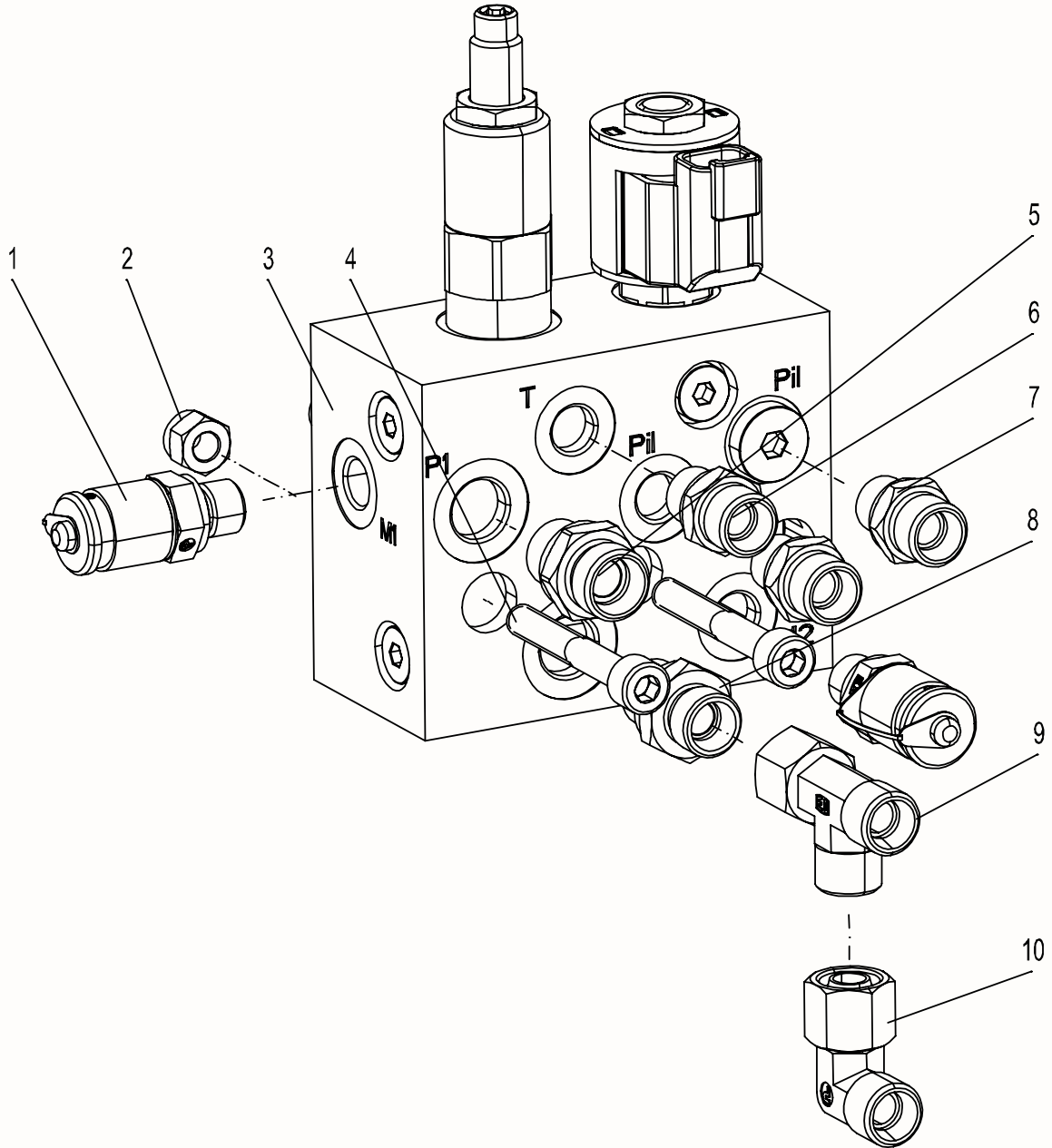
Telescopic Cylinder CBV Assembly 00773405213800000



Telescopic Cylinder CBV Assembly 00773405213800000

No.	Material No.	Item and Spec	Qty	Note
1	1040100148	Screw M8×45-8.8	4	GB/T70.1
2	1040301510	Washer 8	4	GB/T93
3	1010306060	Telescopic CBV	1	
4	1140102936	Male stud connector	2	

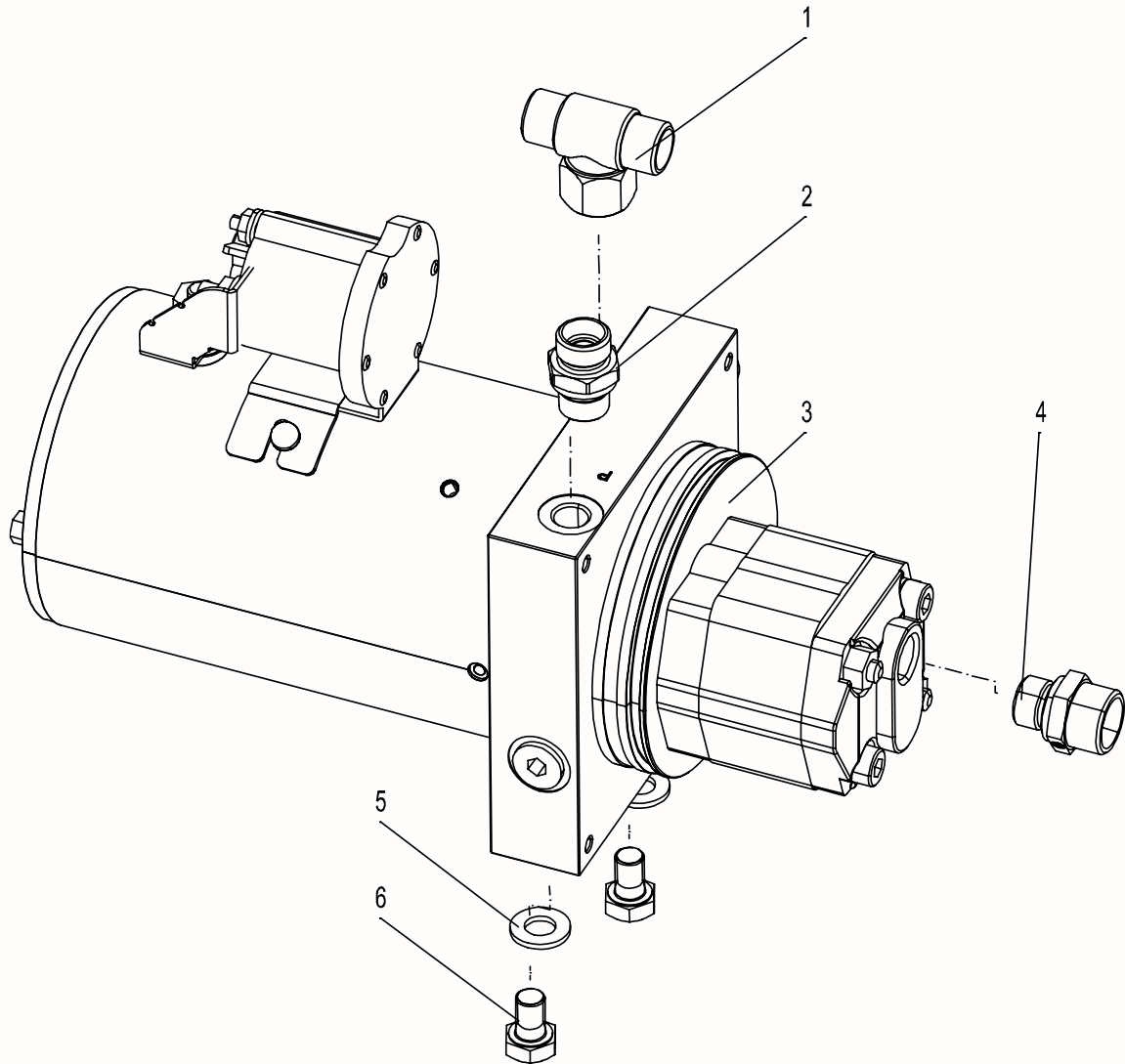
Travel Control Valve Assembly 02564405200800000



Travel Control Valve Assembly 02564405200800000

No.	Material No.	Item and Spec	Qty	Note
1	1140114187	Pressure testing joint	2	
2	1040200503	Nut	2	GB/T93
3	1010308264	Float control valve	1	
4	1040102738	Screw M8×55-8.8	2	GB/T70.1
5	1140114036	Male stud connector	1	
6	1011200264	Male stud connector	2	
7	1140101461	Male stud connector	1	
8	1140114040	Male stud connector	1	
9	1140114046	Male stud connector	1	
10	1140101476	Male stud connector	1	

Emergency Pump Assembly 02564405212000000



Emergency Pump Assembly 02564405212000000

No.	Material No.	Item and Spec	Qty	Note
1	1140101483	Tube to swivel	1	
2	1140101521	Male stud connector	1	
3	1010003029	Emergency motor pump	1	
4	1140101465	Male stud connector	2	
5	1040302489	Washer 10	2	GB/T97.1
6	1040004646	Bolt	2	GB/T5783

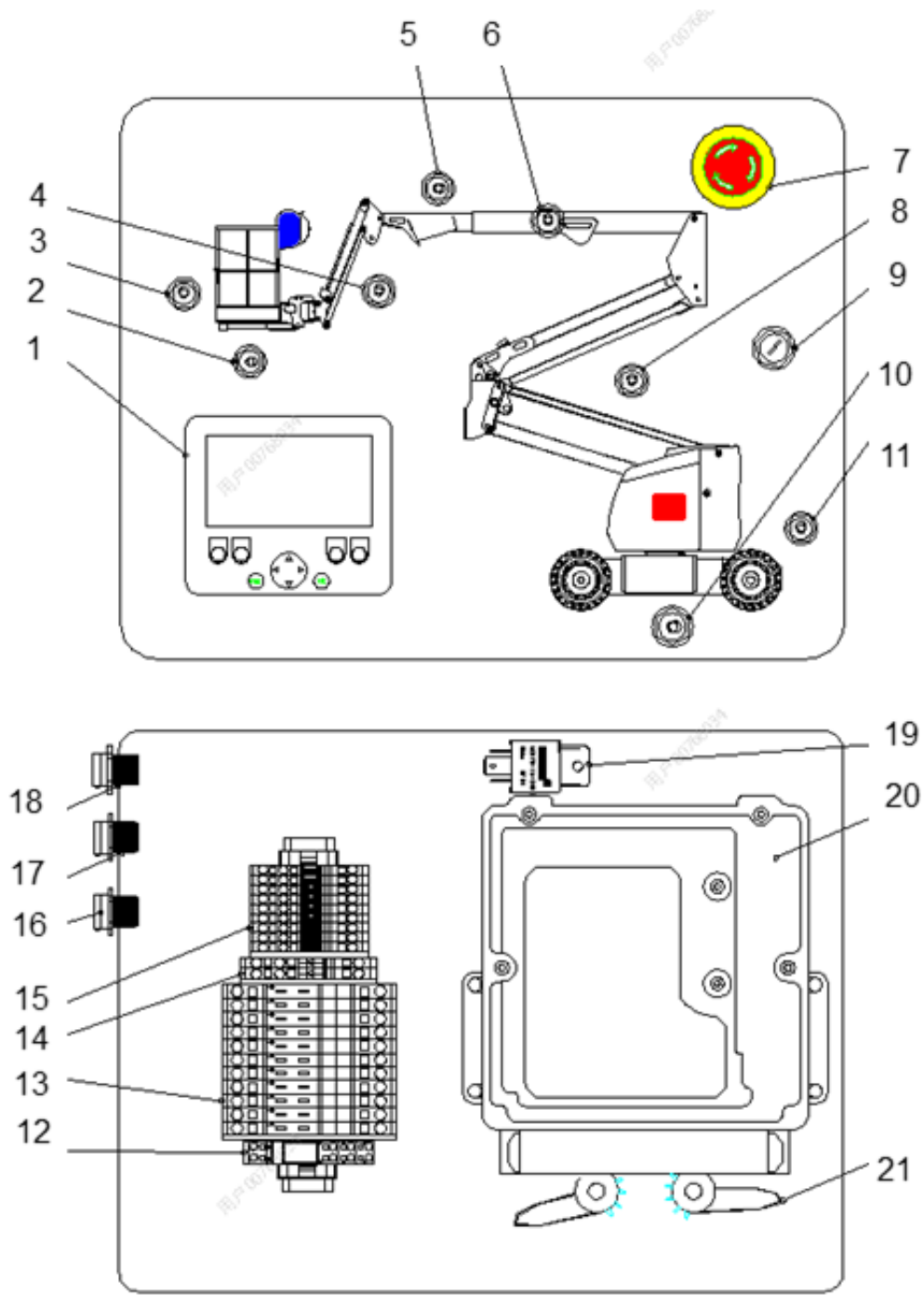
ZOOMLION

Parts Manual

Section 7 Electrical System



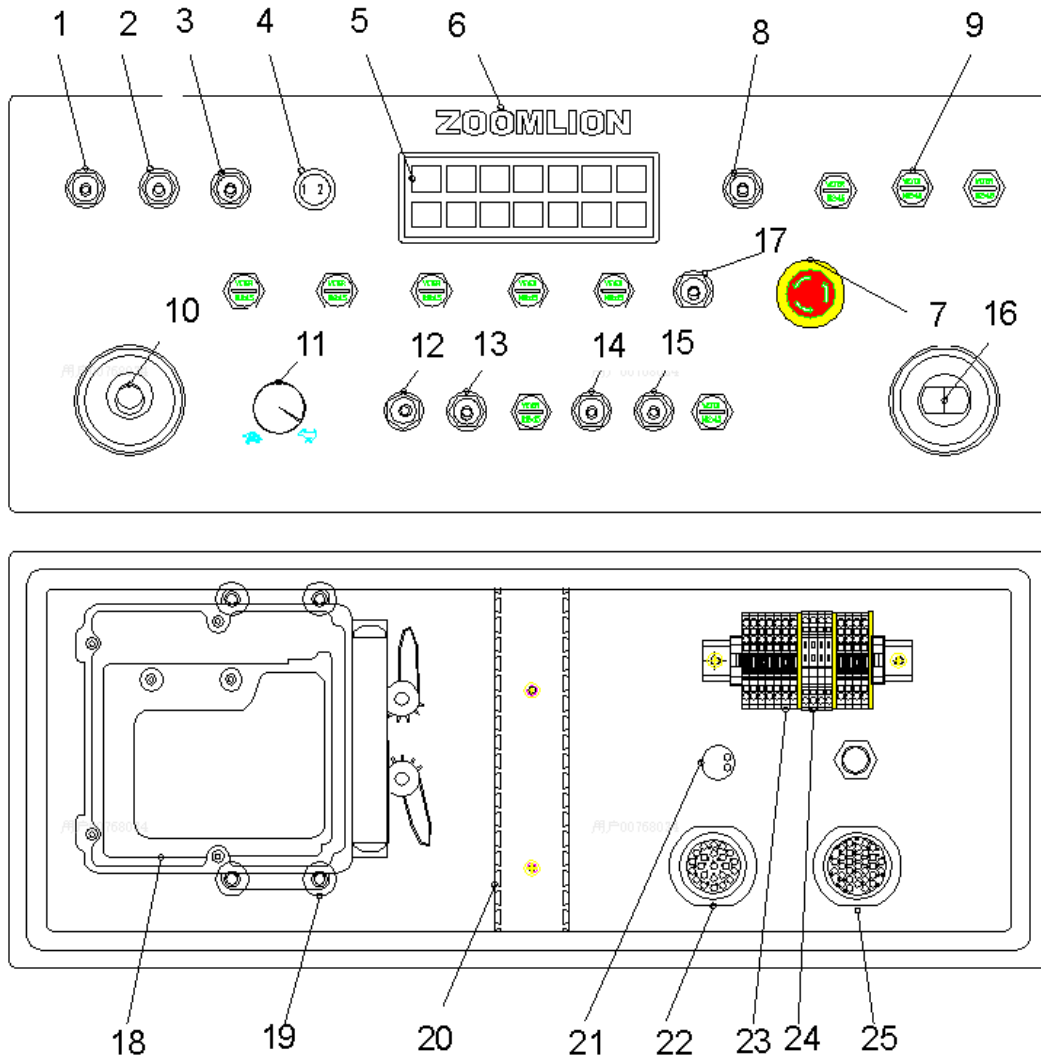
Turntable Electric Control Box Assembly 02564406218020000



Turntable Electric Control Box Assembly 02564406218020000

No.	Material No.	Item and Spec	Qty	Note
1	1022099027	Display	1	
2	1020521445	Toggle switch	1	Platform rotary
3	1020521445	Toggle switch	1	Platform leveling
4	1020521445	Toggle switch	1	Jib lifting
5	1020521445	Toggle switch	1	Boom extension
6	1020521445	Toggle switch	1	Boom lifting
7	1020502039	Emergency stop button	1	Emergency stop switch
	1020509007	Button seat	1	
8	1020521445	Toggle switch	1	Tower boom lifting
9	1020521389	Key switch	1	
10	1020521445	Toggle switch	1	Turntable rotary
11	1020521445	Toggle switch	1	Emergency power and enable
12	1020304559	Relay	1	Light relay
13	1029904980	Terminal	10	
14	1020705826	Diode terminal	2	
15	1029904980	Terminal	11	
16	1029903317	48 core sheath	1	Boom cables
17	1029903317	48 core sheath	1	Turntable cables
18	1029902634	32 core sheath	1	Turntable cables
19	1020304584	Power relay	1	
20	1020103903	Controller	1	
21	1020103955	Connector assembly	1	

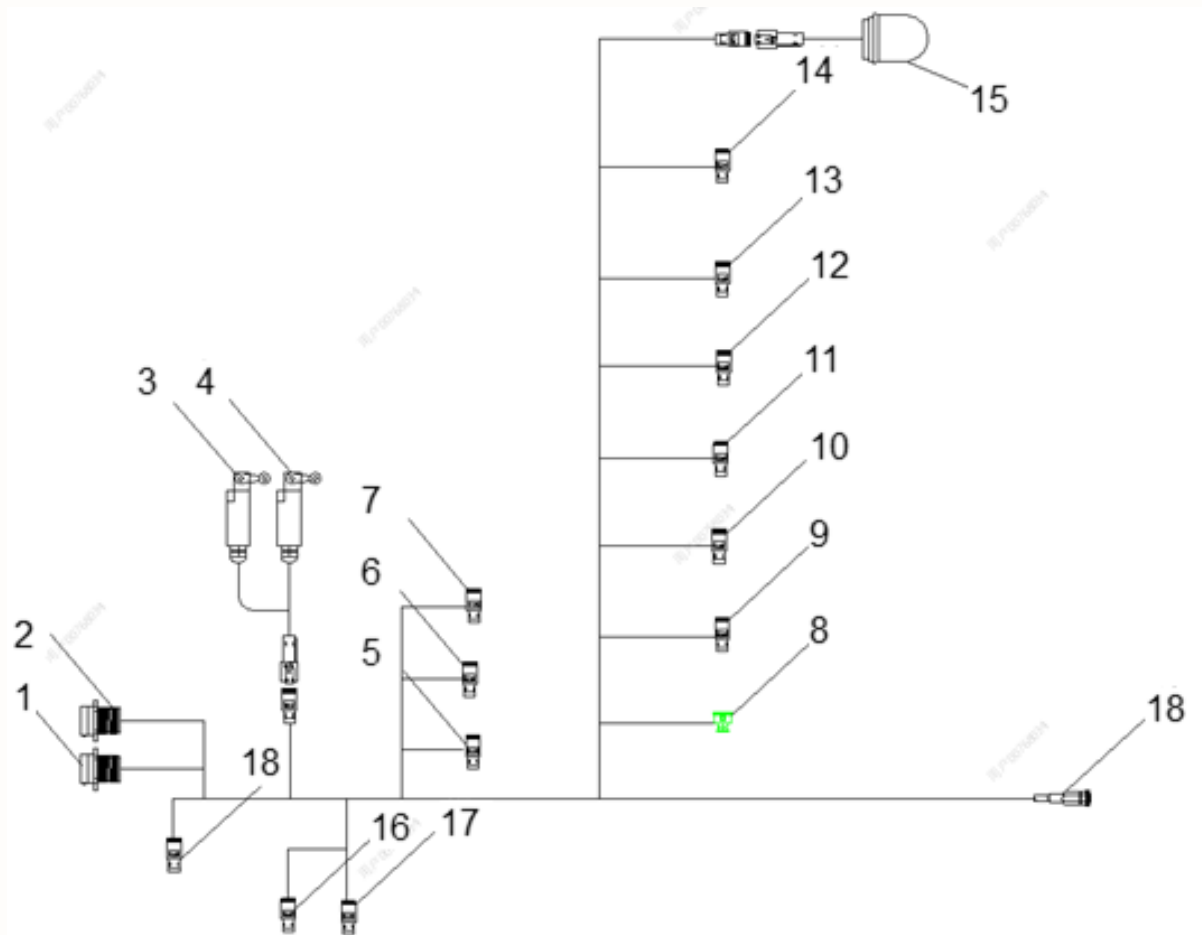
Platform Electric Control Box Assembly 0077340623801000



Platform Electric Control Box Assembly 00773406238010000

No.	Material No.	Item and Spec	Qty	Note
1	1020521445	Joystick	1	Emergency power and enable
2	1020521443	Joystick	1	Travel speed control
3	1020810958	Joystick	1	Directional drive
4	1029805597	Electric horn button	1	Electric horn button
5	1020405061	Alarm indicator panel	1	Travel speed control
6	00772706200210040	Platform electric control box film	1	
7	1020519658	Emergency stop button	1	
	1020509007	Button seat	1	
8	1020521444	Joystick	1	Light
9	1029802085	Nylon plug	10	
10	1029804205	Fastening nut	10	
10	1020520994	Handle	1	
11	1020520995	Potentiometer	1	
12	1020521445	Toggle switch	1	Platform rotary switch
13	1020521445	Toggle switch	1	Jib lifting switch
14	1020521445	Toggle switch	1	Boom extension
15	1020521445	Toggle switch	1	Tower boom lifting
16	1020520993	Handle	1	
17	1020521445	Toggle switch		Platform leveling control
18	1020103903	Controller	1	
20	1020103955	Connector assembly	1	
19		Insulator	4	
20	1022399012	Line slot	1	
21	1020404405	Flash buzzer	1	
22	1020703394	Deutsch connector	1	Chain cables

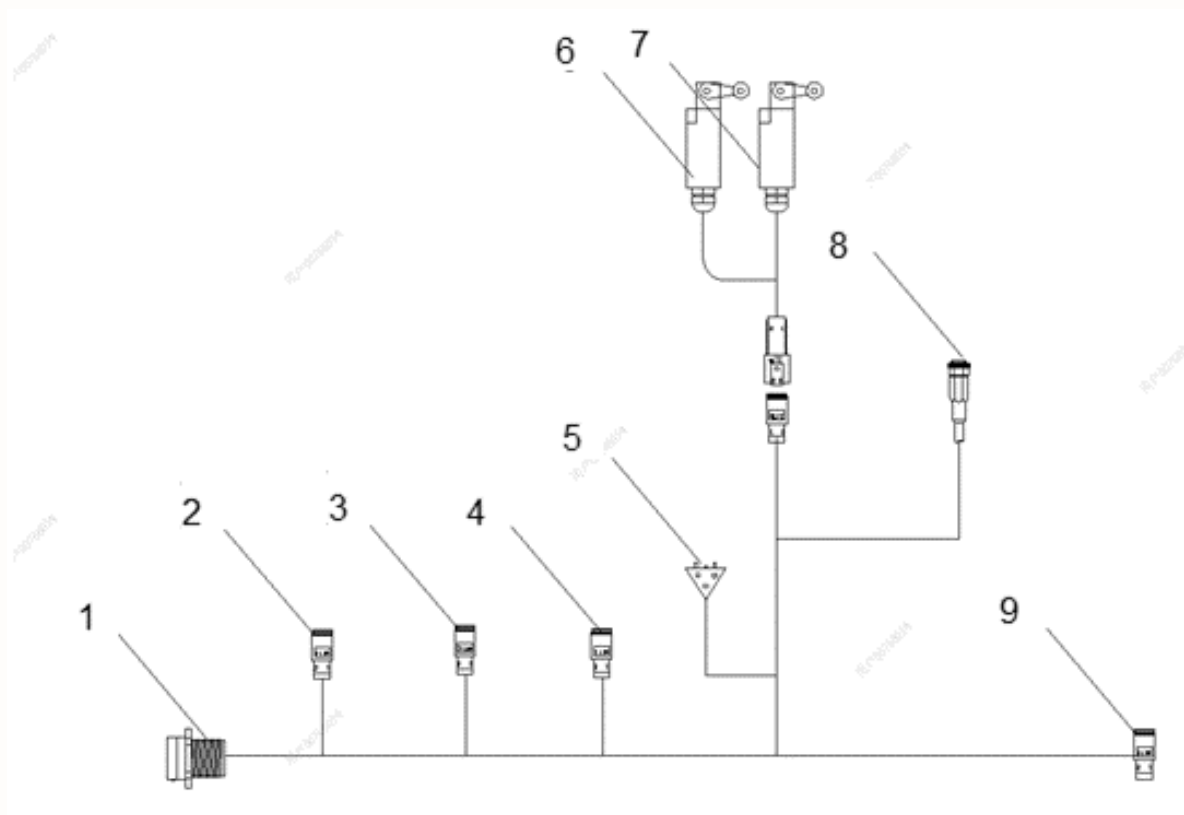
Turntable Cables 02564406218230010



Turntable cables02564406218230010

No.	Material No.	Item and Spec	Qty	Note
1	1029903316	Sheath	1	Turntable electric control box
	1029902632	Terminal	44	
2	1029902635	Sheath	1	Turntable electric control box
	1029902630	Terminal	32	
3	1020516032	Steering angle limit switch	1	
4	1020516032	Steering angle limit switch	1	
5	1020700951	/	1	Leveling extension-reversing valve 2
6	1020700951	/	1	Turntable right turn valve
7	1020700951	/	1	Jib swing- reversing valve 2
8	1020304982	Alarm buzzer	1	
9	1020700951	/	1	Tower boom lifting valve
10	1020700951	/	1	Main boom lifting valve
11	1020700951	/	1	Telescopic leveling-reversing valve 1
12	1020700951	/	1	Turntable left turn valve
13	1020700951	/	1	Jib swing –reversing valve 1
14	1020705144	Relative angle sensor		
15	1020404399	Work light	1	
16	1020700963	Slip ring plug 2		
17	1020700440	Slip ring plug 1		
18	1020700949	Light		

Boom Cables 02564406200230030

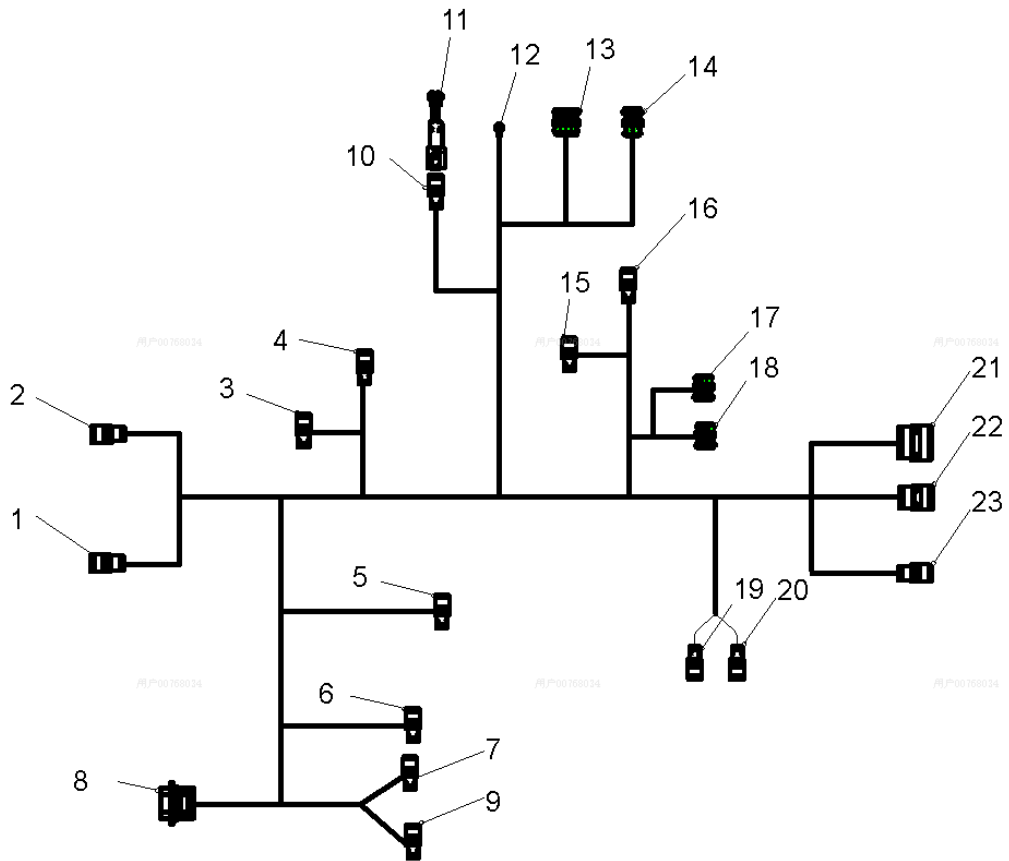


Boom Cables 02564406200230030

No.	Material No.	Item and Spec	Qty	Note
1	1029903711	Connector	1	
2	1020700951	Connector	1	
3	1020700951	Connector	1	
4	1020700951	Connector	1	
5	1020700540	Terminal resistance	1	
6	1020516032	Boom length limit switch 1	1	
7	1020516032	Boom length limit switch 2	1	
8	1021404019	Boom tilting sensor	1	
9	1020703394	Connector	1	

Chassis Cables 02564406218230020

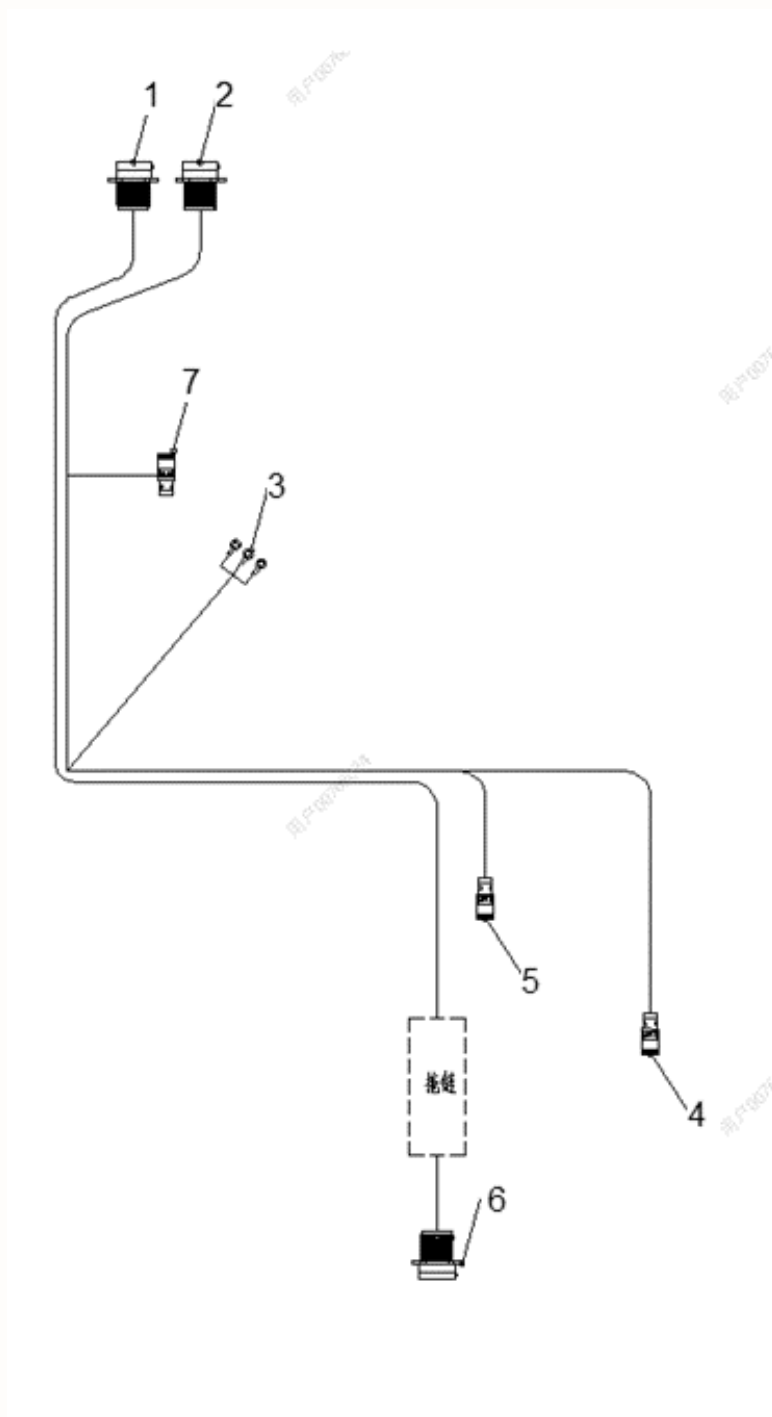
电气系统图



Chassis Cables 02564406218230020

No.	Material No.	Item and Spec	Qty	Note
1	1020700942	Sheath	1	CAN bus signal
2	1020700961	Sheath	1	48V system signal
3	/	Front axle brake	1	
4	/	Rear axle brake	1	
5	/	Terminal resistance	1	
6	/	Diagnosis interface	1	
7	/	Charger communication	1	
8	/	Li-ion battery communication	1	
9	1020700951	Sheath	1	Charger
10	/	Emergency battery to sheath	1	
11	/	Positive and negative of emergency battery	1	
12	1029901587	OT Terminal	1	Auxiliary pump signal
13	1022202106	Sheath	1	Function pump temperature sensor
14	1029801230	Sheath	1	Function pump speed sensor
15	/	Pressure sensor	1	
16	1020700951	Sheath	1	Float control valve
17	1020700951	Sheath	1	Left turn valve
18	1020700951	Sheath	1	Right turn valve
19	1020703391	Sheath	1	Chassis plug 1
20	1020700440	Sheath	1	Chassis plug 2
21	1020700957	Sheath	1	5V signal acquisition
22	/	Sheath	1	12V socket
23	1020700942	Sheath	1	48V socket

Platform Cables 02564406218230040
Chain Cables Change 02564406200240010



Platform Cables 02564406218230040
Chain Cables Change 02564406200240010

No.	Material No.	Item and Spec	Qty	Note
1	1029903711	Sheath	1	Upper plug –chain
2	1022200446	Sheath	1	Platform connector
3	1020521022	Foot switch	1	
4	1020700951	Sheath	1	Jib lifting select valve
5	1029907627	Load cell	1	
6	1029903711	Sheath	1	Lower plug - chain
7	1020700955	Sheath	1	Anti-crushing switch