

ZOOMLION

ZS0610C
Parts Manual

July 2021 Version A

Foreword

Zoomlion appreciates your choice of our machine for your application. The Parts Manual must be read and understood in its entirety before operating the machine.

This manual introduces you the components and significant technical specs of scissor lifts in detail for working efficiency improving. Keep this manual properly at all times for looking up.

Do not attempt to maintain and repair the product without carefully reading and understanding the contents of this manual. If you have any questions or concerns, please call your local service engineer and we will provide you with timely and effective technical support. Zoomlion AWP Machinery Company does not take the consequence of wrong operation.

This manual should be considered a permanent part of your machine and should remain with the machine at all times.

The content is under intellectual property protection, permission is required for a copy or other application.

There might be some tiny differences in details between your machine and the upgraded one due to the continuous improving. For clarification, questions, or additional information regarding any portions of this manual, contact Zoomlion AWP Machinery.

Our company reserves the right to modify this manual as technical improvement without notice.

Thank you for your trust and support for Zoomlion products!

Zoomlion Intelligent Access Machinery Co.,Ltd.

Contents

Forword	I
Contents	II
SECTION 1 WORK PLATFORM ASSEMBLY	1-1
ZS0610C Pin Installation	1-1
ZS0610C Accessory Installation	1-3
SECTION 2 CHASSIS	2-1
ZS0610C Track Installation	2-1
ZS0610C Chain Installation	2-3
ZS0610C Electric Hydraulic Installation	2-5
ZS0610C Ladder	2-7
ZS0610C Battery Tray	2-9
ZS0808/ZS0608 Series Chassis Tray	2-11
ZS0607 Series Chassis Tray	2-13
ZS0407 Series Chassis Tray	2-15
SECTION 3 SCISSOR ARM	3-1
ZS0610C Scissor Arm Pin	3-1
ZS0610C Series Scissor Arm Accessory	3-3
SECTION 4 WORK PLATFORM	4-1
ZS0610C Series Platform Installation	4-1
ZS0610C Platform Gate Installation	4-3
ZS0610C Platform Pulley Installation	4-5
ZS0610C Extension Deck Installation	4-7
ZS0610C Pedal Installation	4-9
SECTION 5 DECAL	5-1
ZS0610C Series Decal Installation	5-3

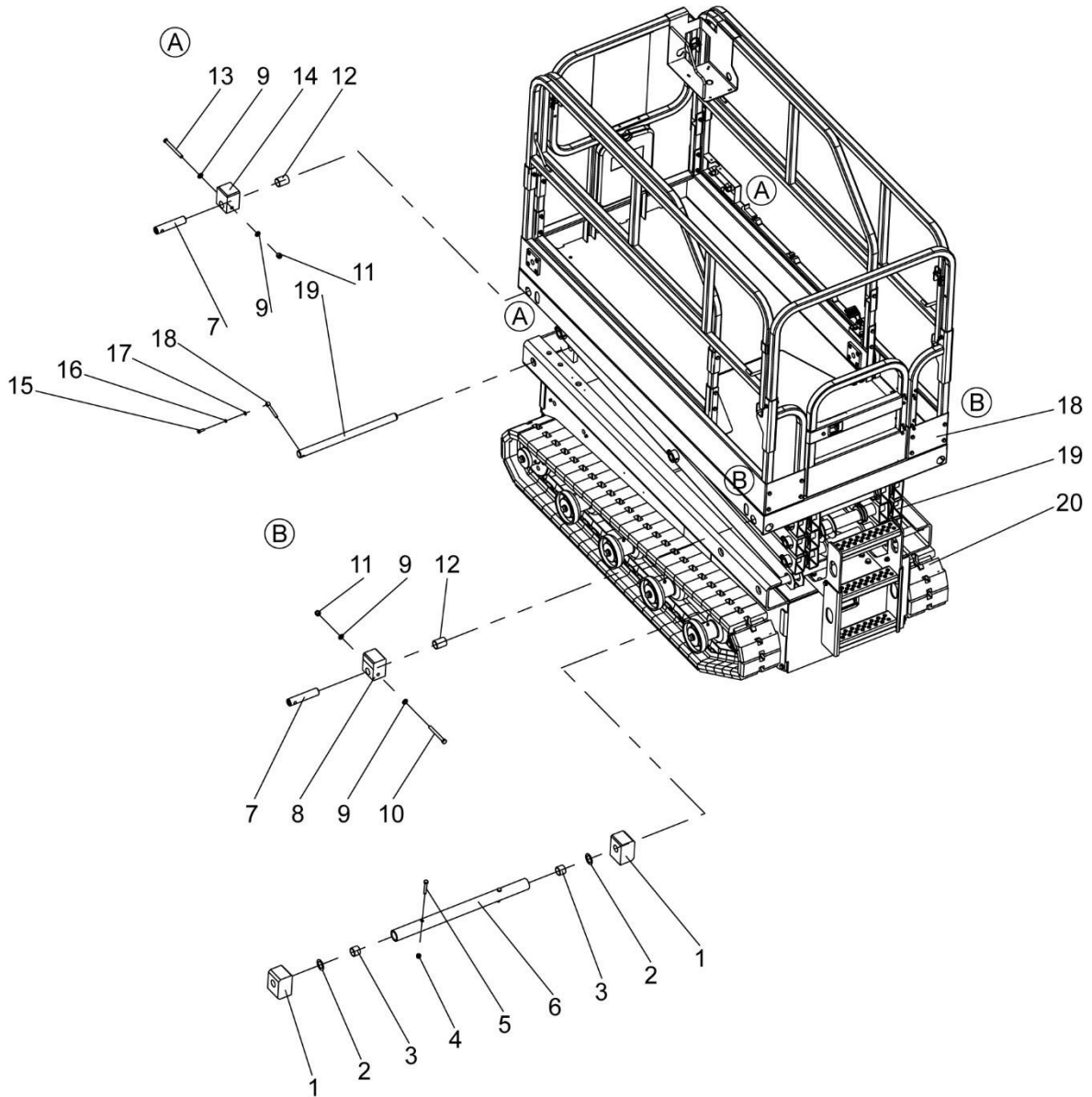
ZOOMLION

Parts Manual

Section 1 Work Platform Assembly



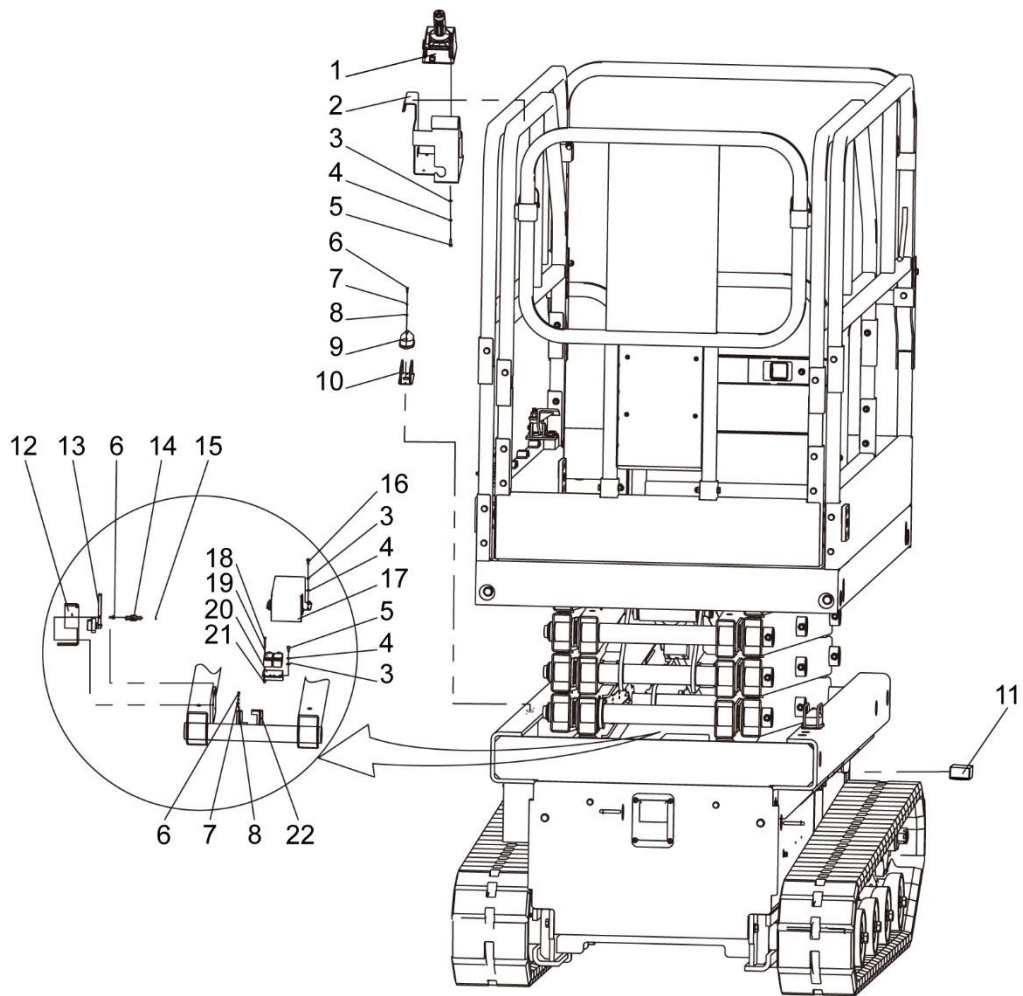
ZS0610C Series Pin



ZS0610C Series Pin

NO.	Material No.	Item and Spec	Units	Remark
1	00775300340001050	Lower sliding block	2	
2	00775300310001120	Gasket	2	
3	1054400336	Composite bush	2	
4	1040200504	Nut M10-8	2	GB/T889.1-2000
5	1040000072	Bolt M10×65-8.8	2	GB/T5782-2000
6	00775300340001030	Lower sliding shaft	1	
7	00775300000011060	Upper fixed shaft	4	
8	00775300000011050	Upper sliding block	2	
9	1040300526	Washer 12	8	GB/T97.1-2002
10	1040000246	Bolt M12×110-8.8	2	GB/T5782-2000
11	1040200507	Nut M12-8	4	GB/T889.1-2000
12	1054400338	Composite bush	4	
13	1040000807	Bolt M12×120-8.8	2	GB/T5782-2000
14	00775300000011080	Upper sliding block	2	
15	1040000288	Bolt M8×25-8.8	1	GB/T5783-200
16	1040300063	Washer 8	1	GB/T93-1987
17	1040300066	Washer 8	1	GB/T97.1-2002
18	00775600000001050	Articulated pin	1	
19	00775300000011020	Lower fixed shaft	1	
20	00775300120000000	Work Platform	1	
21	00775300340000000	Scissor Arm	1	
22	00775302840000000	Chassis	1	

ZS0610C Series Accessory



ZS1623RT Series Accessory

NO.	Material No.	Item and Spec	Units	Remark
1	1020104327	Platform control assembly	1	
2	00775606300410000	Upper control box	1	
3	1040300051	Washer 6	13	GB/T97.1-2002
4	1040300062	Washer 6	13	GB/T93-1987
5	1040100055	Screw M6×20-8.8	6	GB/T70.1-2000
6	1040100618	Screw M4×16-8.8	10	GB/T818-2000
7	1040300044	Washer 4	8	GB/T93-1987
8	1040301697	Washer 4	8	GB/T97.1-2002
9	1029906635	LED Strobe light	2	
10	1029906206	Guard	2	
11	1021403922	Angle sensor	1	
12	00775306504441010	Angle sensor mounting bracket	1	
13	1021404319	Angle sensor	1	
14	00775706320601020	Screw	1	
15	1040300067	Washer 10	1	GB/T93-1987
16	1040100127	Screw M6×12-8.8	4	GB/T70.1-2000
17	00775306320201020	Limit protection cover	1	
18	1040102716	Screw M4×35	4	GB/T70.1-2000
19	1020520944	Limit switch	2	
20	00775306320201010	Limit bracket	1	
21	1040201605	Lock nut M4-8	4	GB/T889.1-2000
22	00775300000011070	Limit block	2	

ZOOMLION

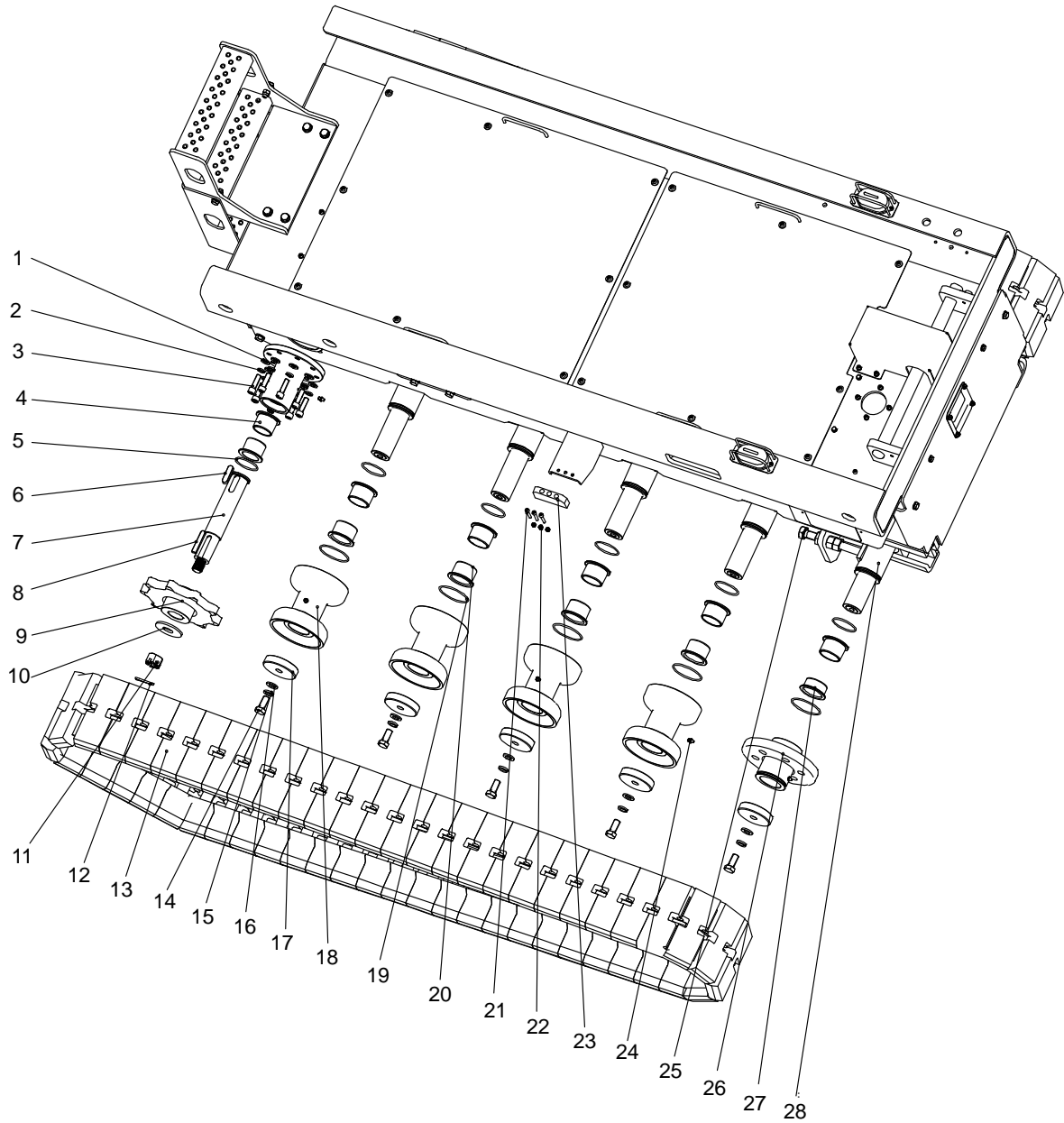
Parts Manual

Section 2 Chassis



ZS0610C Caterpillar Institutions

CHASSIS

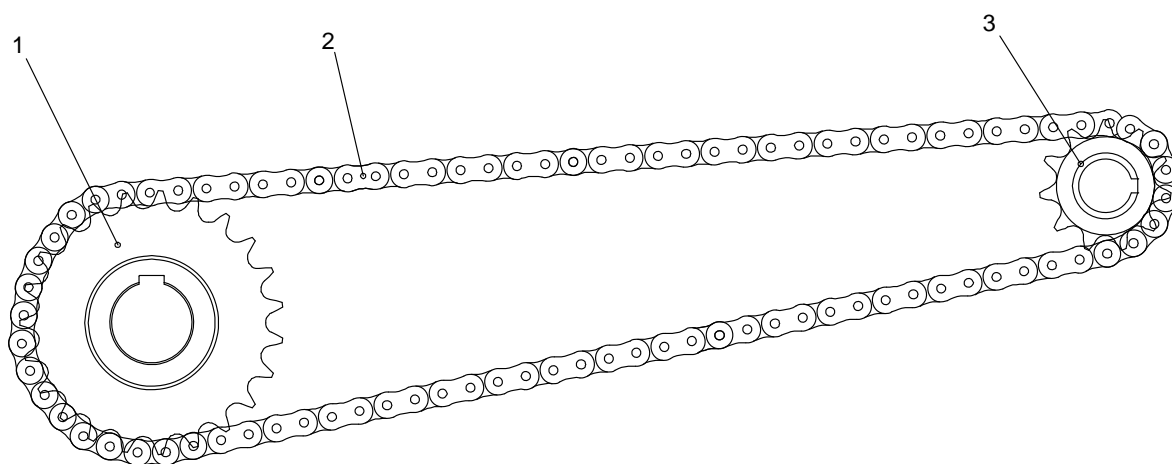


ZS0610C Caterpillar Institutions

NO.	Material No.	Item and Spec	Units	Remark
1	1040300526	Washer 12	16	GB/T97.1-2002
2	1040300054	Washer 12	16	GB/T93-1987
3	1040100854	Screw M12×40-10.9	16	GB/T70.1-2008
4	00775302840001250	Drive wheel shaft sleeve	4	
5	1081002027	O-ring 56×3.55	2	GB/T3452.1-2005
6	1040600145	Flat key 14×9×50	2	GB/T1096-2003
7	00775302840001230	Driveing shaft	2	
8	1040600723	Flat key C12×8×63	2	GB/T1096-2003
9	00775302843000000	Driveing wheel	2	
10	1040300212	Washer 24-200HV	2	GB/T96.1-2002
11	1040200840	Nut M24x3	2	GB/T6181-1986
12	1040500394	Cotter pin	2	GB/T91-2000
13	1031400891	Rubber track 200×72×55-A	2	
14	1040000016	Bolt M16×35-8.8	10	GB/T5783-2000
15	1040302937	Washer 16	10	GB/T93-2000
16	1040300052	Washer	10	GB/T97.1-2002
17	00775302840001220	Wheel cover	10	
18	00775302840001340	Counterweight wheels	8	
19	1081001703	O-ring 75×3.55	20	GB/T3452.1-2005
20	00775302840001270	Supporting wheel shaft sleeve	18	
21	1040101191	Screw M6×40-10.9	6	GB/T70.1-2008
22	1040201097	Nut M6-9	6	GB/T6182-2000
23	00775302840001280	Joe zone plate	2	
24	1080000006	Oil cup M8×1	12	JB/T7940.1-1995
25	108000001002	Bolt M20×160-8.8	2	GB/T5783-2000
26	00775302841600000	Guide wheel	2	
27	00775302840001360	Guide wheel shaft sleeve	2	
28	00775302840400000	Guide wheel mounting seat	2	

ZS0610C Chain drive

CHASSIS

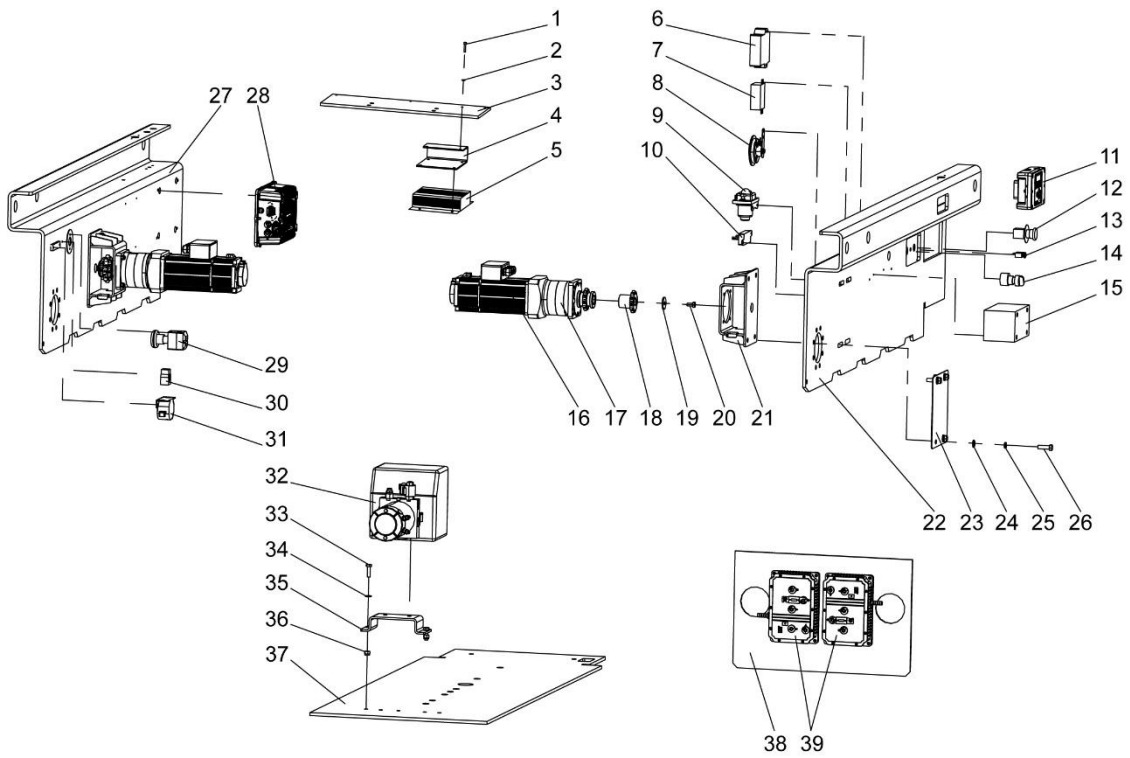


ZS0610C Chain drive

NO.	Material No.	Item and Spec	Units	Remark
1	00775302840001260	Driven sprocket	2	
2	1031001276(左侧)	Roller chain 12A-1×74	1	GB/T1243-2006
	1031001824(右侧)	Roller chain 12A-1×56	1	GB/T1243-2006
3	00775302840001390	Drive sprocket	2	

ZS0610C Electrical and Hydraulic Components

CHASSIS

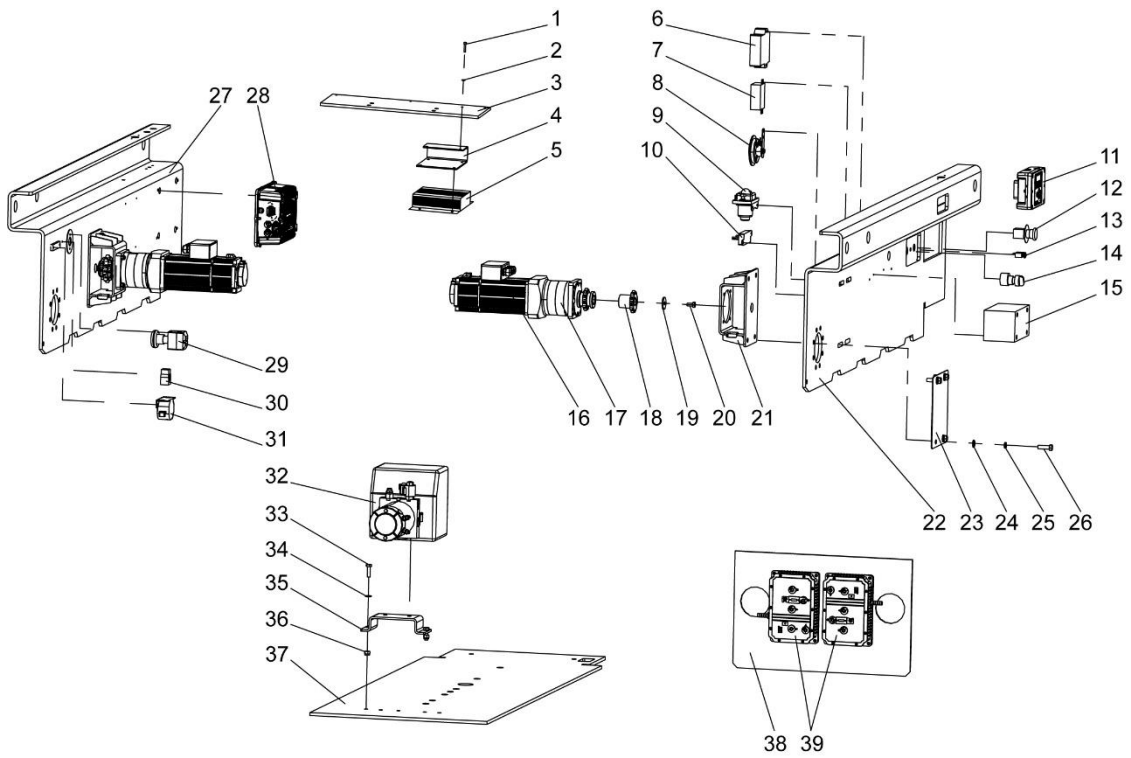


ZS0610C Electrical and Hydraulic Components

NO.	Material No.	Item and Spec	Units	Remark
1	1040100237	Screw M6×30-8.8	2	GB/T70.1-2000
2	1040300051	Washer 6	2	GB/T97.1-2002
3	00775302840201100	Rear panel	1	
4	00775302840001320	Driver mounting plate	1	
5	1020005163	Electric drive	1	
6	1020201964	GPS terminal	1	
7	1020605226	Continuation protector	1	
8	1020304978	Basin type horn	1	
9	1020304604	DC contactor	1	
10	1020604246	Fuse holder	1	
11	1020104328	Ground control assembly	1	
12	1020502039	Emergency stop button head	1	
13	1020304979	Breaker	1	
14	1020521389	Key switch	1	
15	1020605443	Leakage circuit breaker	1	
16	1020005551	Motor	2	
17	1030202864	Reducer	2	
18	00775302840001390	Drive sprocket	2	
19	00775302840001310	Big gasket	2	
20	1040000116	Bolt M10×20-8.8	2	GB/T5783-2016

ZS0610C Electrical and Hydraulic Components

CHASSIS

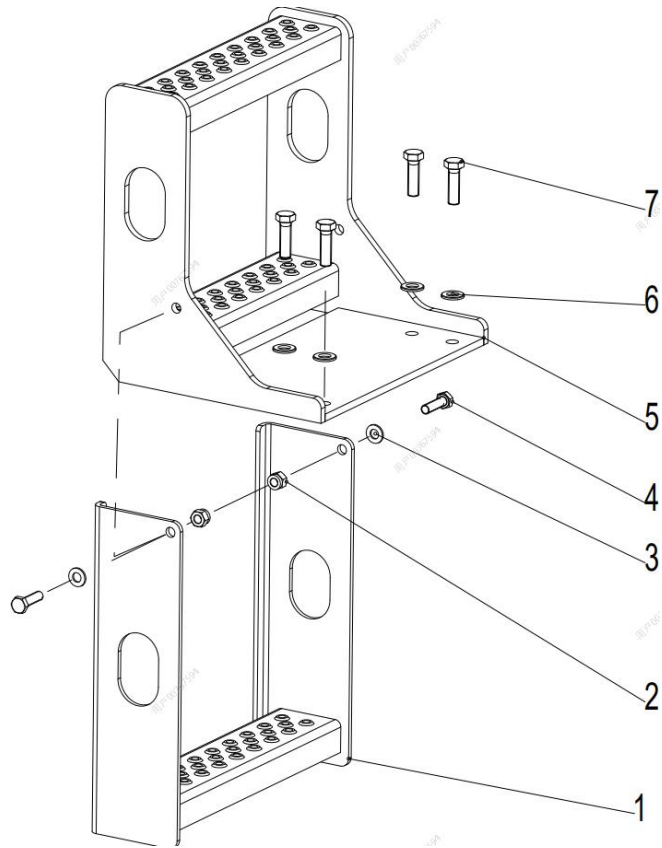


ZS0610C Electrical and Hydraulic Components

NO.	Material No.	Item and Spec	Units	Remark
21	00775302843400000	Motor mount	2	
22	00775302840201570	Right side plate	1	
23	00775302840001210	Motor cover plate	2	
24	1040300526	Washer 12	8	GB/T97.1-2002
25	1040300054	Washer 12	8	GB/T93-1987
26	1040000101	Bolt M12×40-8.8	8	GB/T5783-2016
27	00775302840201550	Left side plate	1	
28	1020999046	On-board charger	1	
29	1020521277	Main power switch	1	
30	1020300083	Universal relay	1	
31	1020304982	Buzzer	1	
32	1010101159	Power unit	1	
33	1040001595	Bolt M10×35-8.8	2	GB/T5783-2000
34	1040300061	Washer 10	2	GB/T97.1-2002
35	00775302840001110	Power unit mounting plate	1	
36	1040200504	Nut M10-8	2	GB/T889.1-2000
37	00775302840201060	Chassis backplane	1	
38	00775302840201240	Frame reinforcing plate	1	
39	1029907580	Motor driver	2	

ZS0610C Ladder

CHASSIS

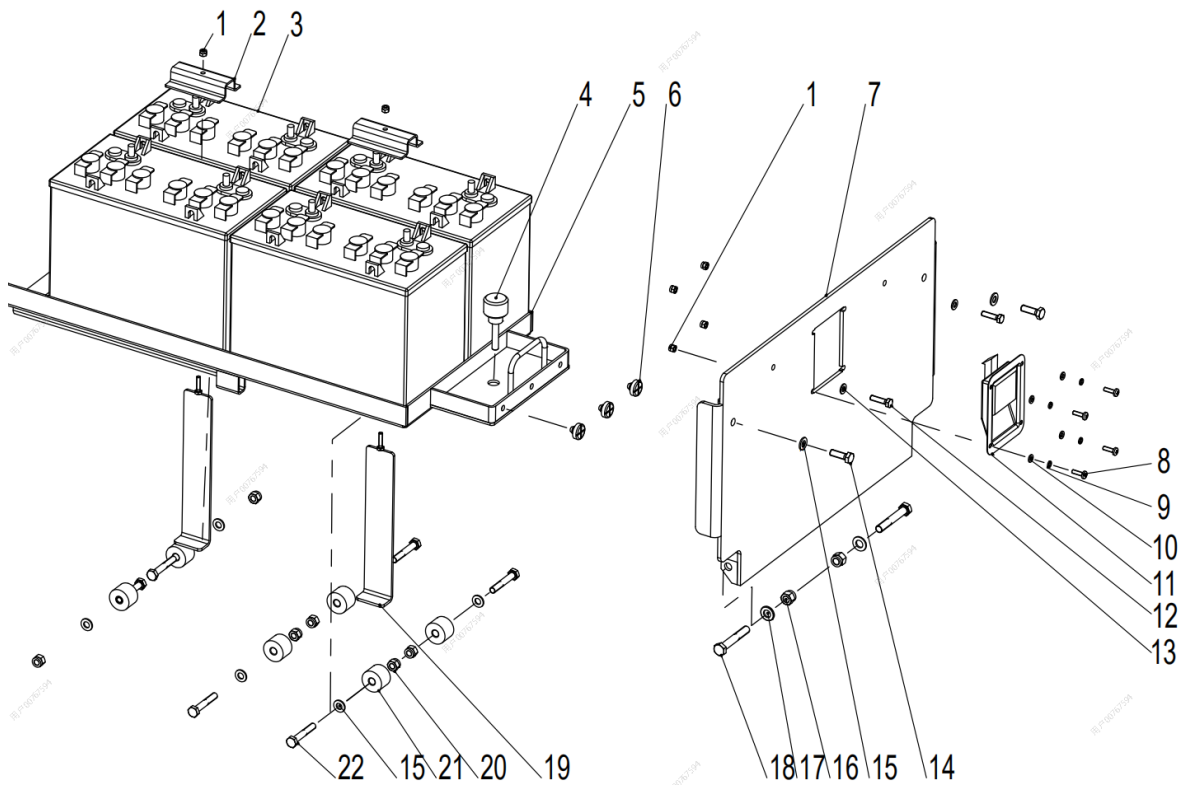


ZS0610C Ladder

NO.	Material No.	Item and Spec	Units	Remark
1	00775302841400000	Lower ladder	1	
2	1040200504	Nut M10-8	2	GB/T889.1-2000
3	1040300061	Washer 10-200HV	2	GB/T97.1-2002
4	1040001595	Bolt M10×35-8.8	2	GB/T5783-2000
5	00775302841200000	Upper ladder	1	
6	1040300526	Washer 12	4	GB/T97.1-2002
7	1040000101	Bolt M12×40-8.8	4	GB/T5783-2016

ZS0610C Battery Tray

CHASSIS



ZS0610C Battery Tray

NO.	Material No.	Item and Spec	Units	Remark
1	1040200506	Nut M6-8	6	GB/T889.1-2000
2	00775302840601030	Battery holder	2	
3	1020903319	Battery	4	Foreign configuration
	1020903421	Battery	4	Domestic configuration
4	1109901025	Plum lever screw D=38-M10×50	1	
5	00775302840610000	Tray welding	1	
6	00775800100001110	Rubber spacer	3	
7	00775302841000000	Front door weldment	1	
8	1040101212	Screw M6×20	4	GB/T818-2000
9	1040300062	Washer 6	4	GB/T93-1987
10	1040300051	Washer 6-200HV	4	GB/T97.1-2002
11	1101000131	Panel lock	1	
12	1040000018	Bolt M8×30	2	GB/T5783-2000
13	1040300066	Washer 8-200HV	2	GB/T97.1-2002
14	1040001680	Bolt M10×30	2	GB/T5783-2016
15	1040300061	Washer 10-200HV	8	GB/T97.1-2002
16	1040200507	Nut M12-8	2	GB/T889.1-2000
17	1040300526	Washer 12	2	GB/T97.1-2002
18	1040002240	Bolt M12×75	2	GB/T5782-2000
19	00775302840620000	Battery mounting plate	2	
20	1040200504	Nut M10-8	6	GB/T889.1-2000
21	00775302840601040	Nylon roller	6	
22	1040004535	Bolt M10×60	6	GB/T5782-2000

ZOOMLION

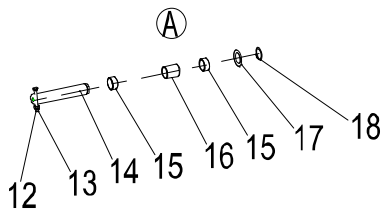
Parts Manual

Section 3 Scissor Arm

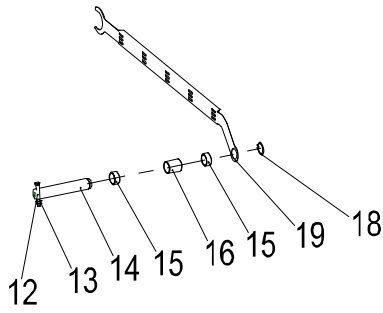


ZS0610C Scissor Arm Pin

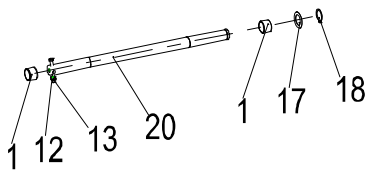
SCISSOR ARM



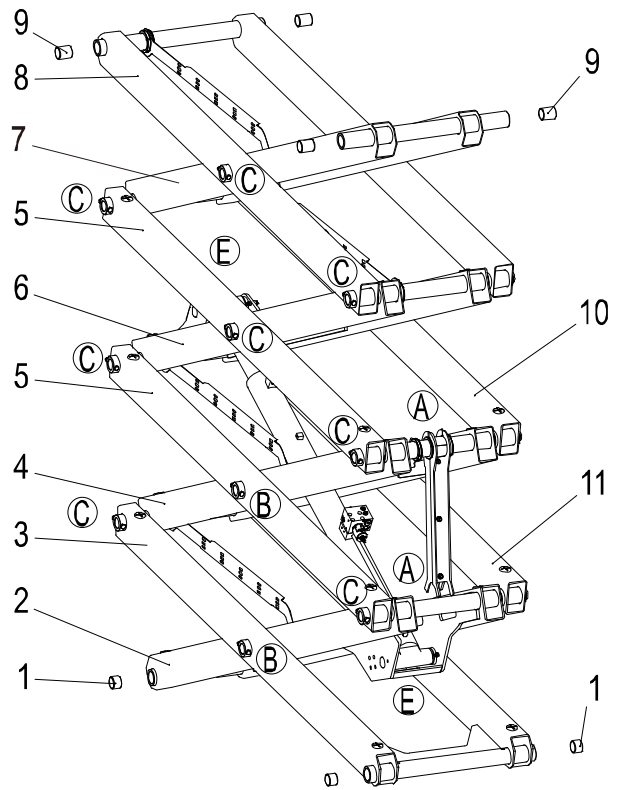
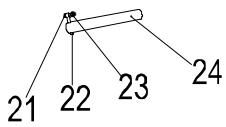
(B)



(C)



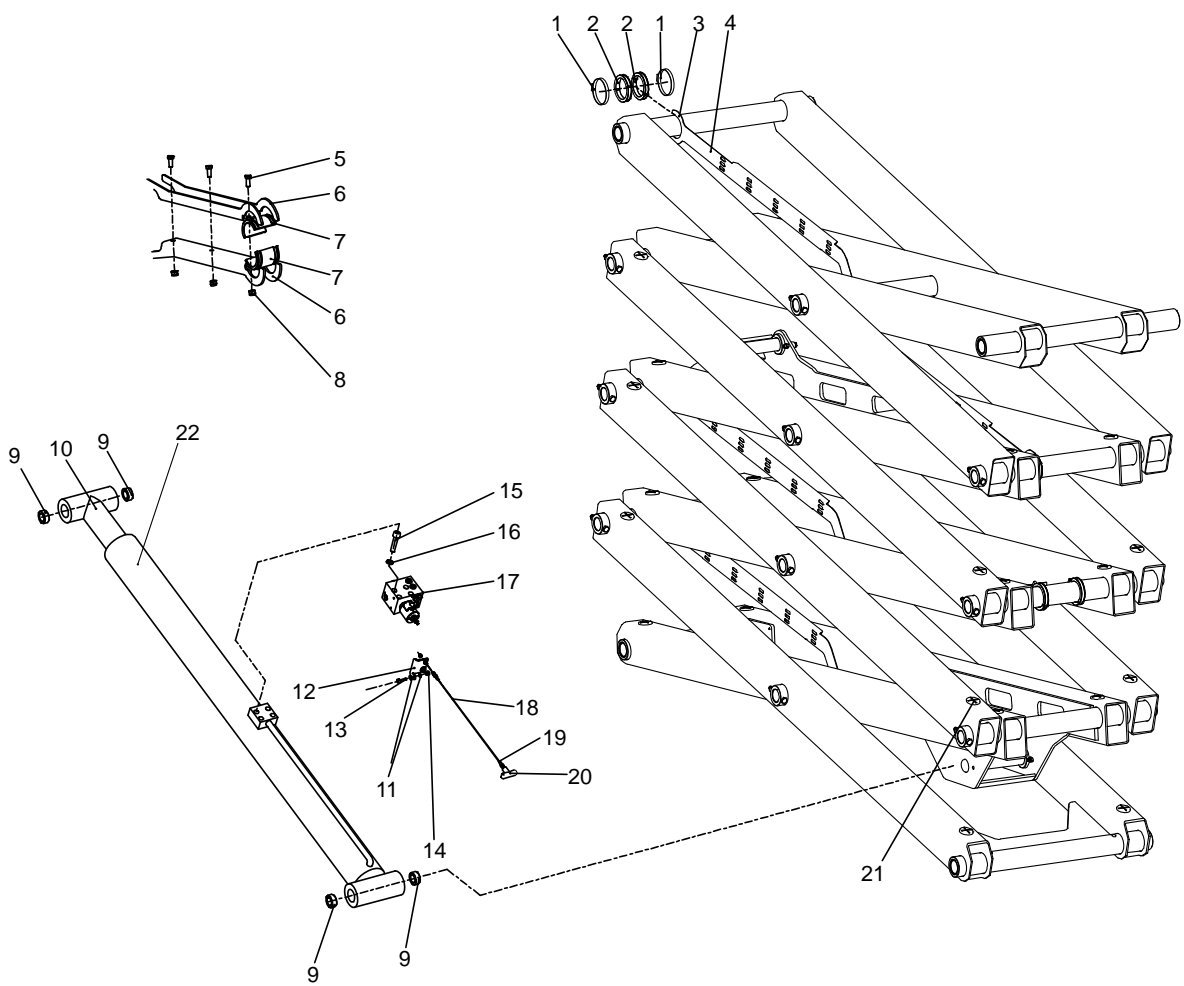
(E)



ZS0610C Series Scissor Arm Pin

NO.	Material No.	Item and Spec	Units	Remark
1	1054400336	Composite bush 32.13/32.21×38.05/38.1×30	26	
2	00775300340400000	Internal scissor arm I	1	
3	00775300340200000	External scissor arm I	1	
4	00775300340600000	Internal scissor arm II	1	
5	00775300341200000	External scissor arm II	2	
6	00775300340800000	Internal scissor arm III	1	
7	00775300341000000	Internal scissor arm IV	1	
8	00775300341600000	External scissor arm □	1	
9	1054400338	Composite bush 32.13/32.21×38.05/38.1×50	4	
10	00775300341800000	External scissor arm V	1	
11	00775300341400000	External scissor arm III	1	
12	1040200504	Nut M10-8	15	GB/T889.1-2000
13	1040000072	Bolt M65×80-8.8	13	GB/T5782-2000
14	00775300310001020	Axle II	2	
15	1054400337	Composite bush 32.13/32.21×38.05/38.1×20	4	
16	00775300310001100	Bearing spacer	2	
17	00775300310001120	Gasket	13	
18	1040300153	Elastic retainer for shaft 32	12	GB/T894.1-1986
19	00775300340001020	End line slot □	2	
20	00775300310001010	Axle I	9	
21	1040000689	Bolt M8×35-8.8	2	GB/T5782-2000
22	00775600000001050	Articulated pin	2	
23	1040200503	Nut M8-8	2	GB/T889.1-2000
24	00775300340001040	Axle □	2	

ZS0610C Scissor Arm Accessory



SCISSOR ARM

ZS0610C Series Scissor Arm Accessory

NO.	Material No.	Item and Spec	Units	Remark
1	1990201051	Clamp $\phi 60-\phi 80$	6	
2	00775300310001090	Nylon sleeve II	12	
3	00775300340001010	End line slot□	2	
4	1089900652	Sealing strip 16×3	6	
5	1040000114	Bolt M10×25-8.8	3	GB/T5782-2000
6	00775600300001060	Support bar	2	
7	00775300310001040	Nylon sleeve I	2	
8	1040200504	Nut M10-8	3	GB/T889.1-2000
9	1054400336	Composite bush 32.13/32.21×38.05/38.1×30	4	
10	1010201686	Hadraulic oil cylinder	1	
11	1040300051	Washer 6	4	GB/T97.1-2002
12	00775605200401030	Pull down the cable bracket	1	
13	1040100055	Hexagon socket svrew M6×20	2	GB/T70.1-2000
14	1040200506	Nut M6-8	2	GB/T889.1-2000
15	1040102034	Screw M8×60-10.9	4	GB/T70.1-2000
16	1040300063	Washer 8	4	GB/T93-1987
17	1010308649	Lower lift cylinder control valve	1	
18	1019901768	Stay	1	
19	1040201842	Connecting nut M8-M5	1	
20	1100700162	T handle (red)	1	
21	00775600300001110	Plastic mat	24	

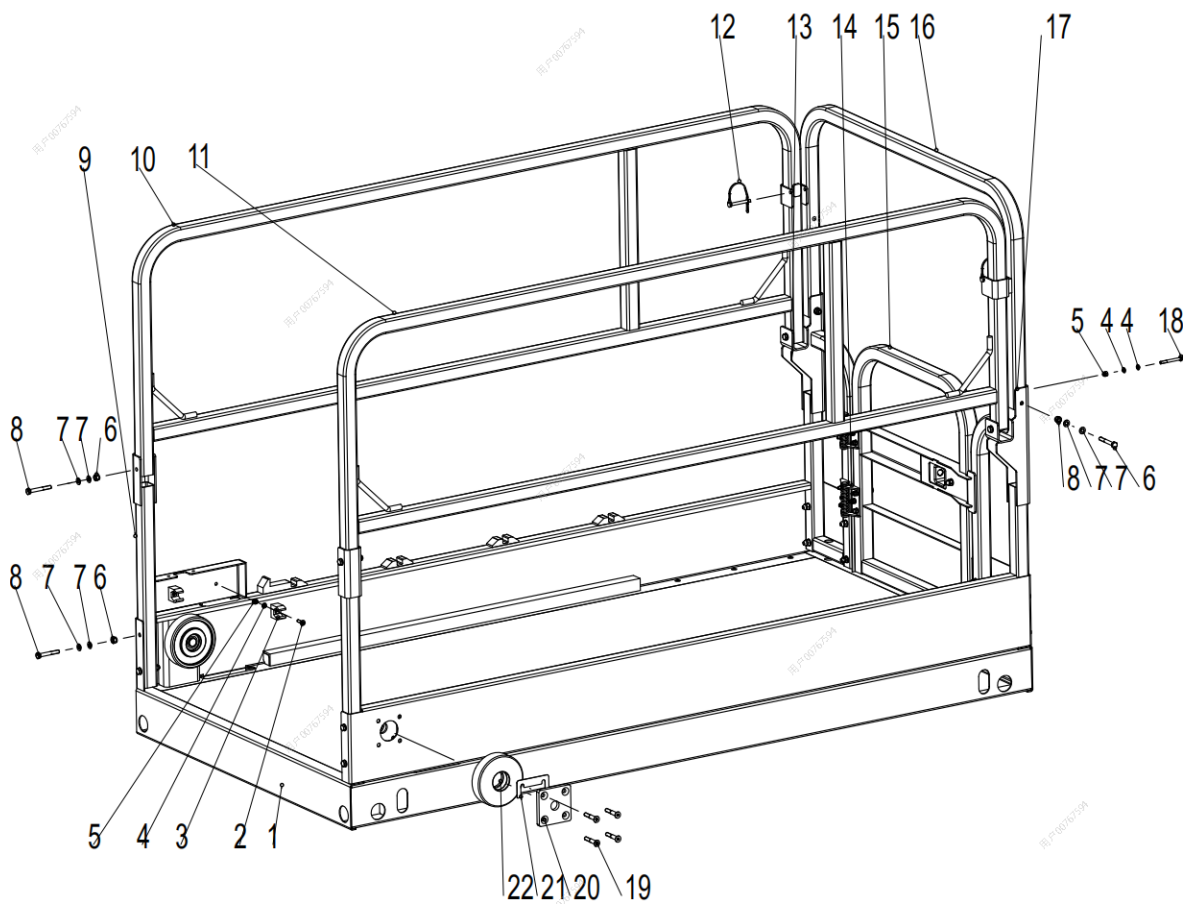
ZOOMLION

Parts Manual

Section 4 Work Platform



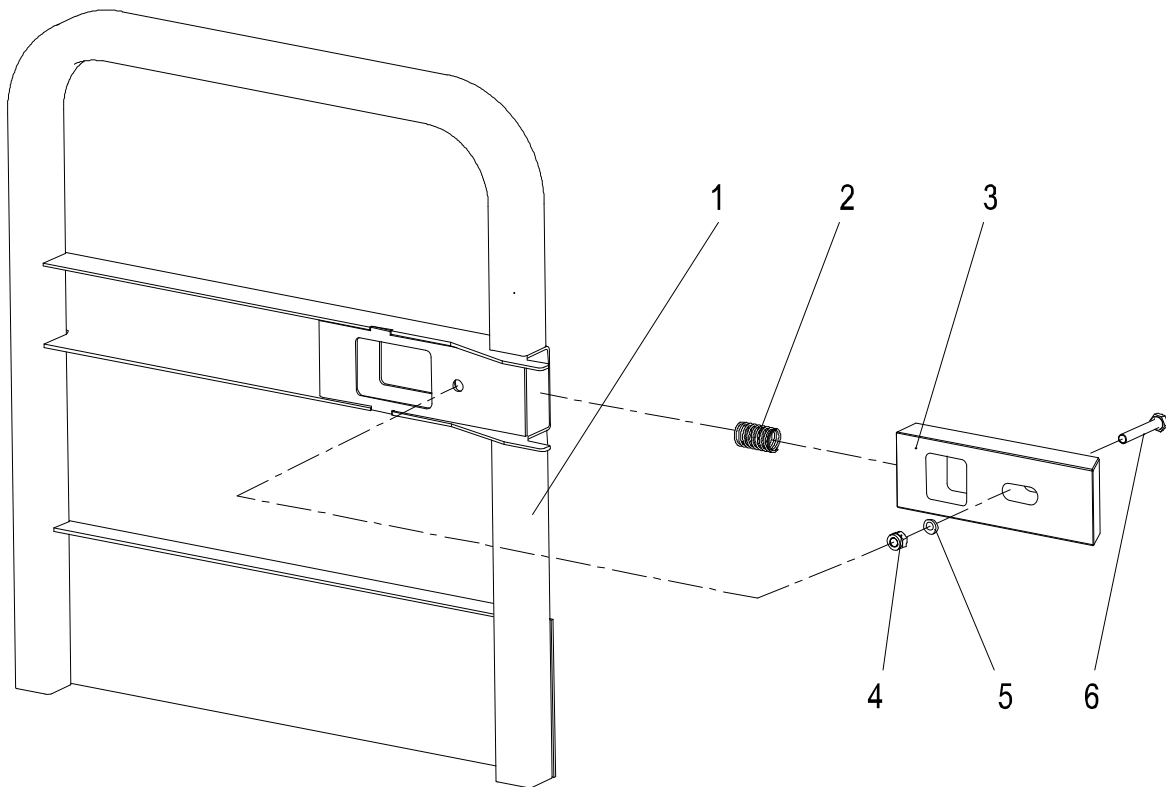
ZS0610C Platform



WORK PLATFORM

ZS0610C Platform

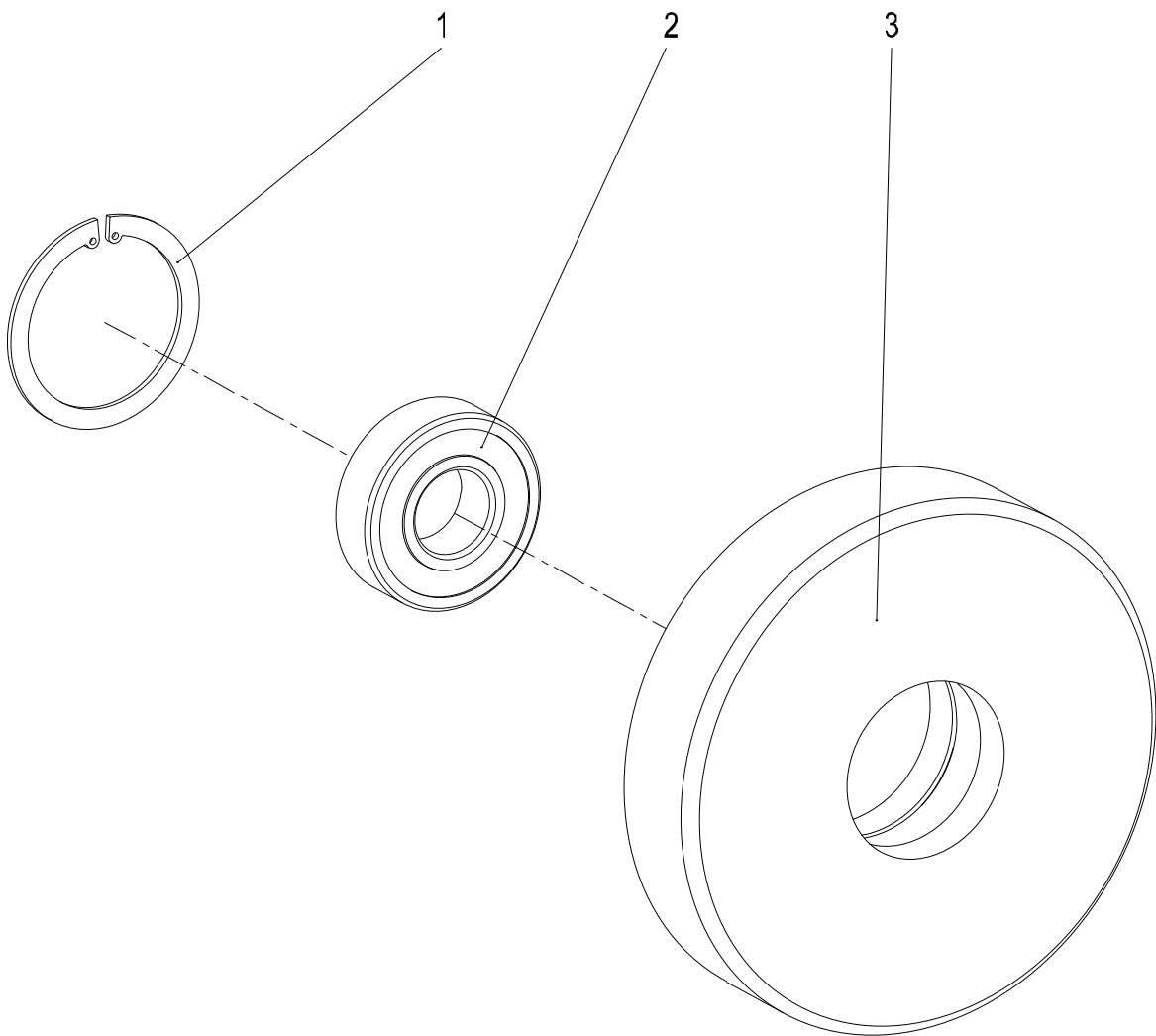
NO.	Material No.	Item and Spec	Units	Remark
1	00775300120200000	Lower components	1	
2	1040101212	Screw M6×20	2	GB/T818-2000
3	00775600100001030	Line block	2	
4	1040300051	Washer 6	24	GB/T97.1-2002
5	1040200506	Nut M6-8	14	GB/T889.1-2000
6	1040200503	Nut M8-8	16	GB/T889.1-2000
7	1040300066	Washer 8	34	GB/T97.1-2002
8	1040000469	Bolt M8×55	14	GB/T5782-2000
9	00775300120800000	Fixed platform transition joint	2	
10	00775300122000000	Guard rails II	1	
11	00775300121000000	Guard rails I	1	
12	1100400025	D pin 6.3×55	2	
13	00775300120600000	Fixed platform guardrail mounting seat II	1	
14	1101000163	Spring hinge	2	
15	00775600101800000	Platform gate	1	
16	00775300121400000	Guard rails III	1	
17	00775300120800000	Fixed platform guardrail mounting seat I	1	
18	1040001185	Bolt M6×50-8.8	12	GB/T5783-2000
19	1040102718	Screw M8×50	8	GB/T70.1-2000
20	1101000163	Spring hinge	2	
21	1040300051	Washer 6	24	GB/T97.1-2002
22	1040001185	Bolt M6×50-8.8	12	GB/T5783-2000
23	00775600102400000	Platform pin mounting seat	2	
24	00775600100001020	Gasket I	2	
25	00775600102201010	Fixed platform mounting wheel	2	

ZS0610C Platform Gate

ZS0610C Platform Gate

NO.	Material No.	Item and Spec	Units	Remark
1	00775600101810000	Platform Gate Weldment	1	
2	00775600101801020	Spring	1	
3	00775600101801010	Key cylinder	1	
4	1040200503	Bolt M8-8	1	GB/T889.1-2000
5	1040300066	Washer 8	1	GB/T97.1-2002
6	1040000469	Bolt M8×55	1	GB/T5783-2000

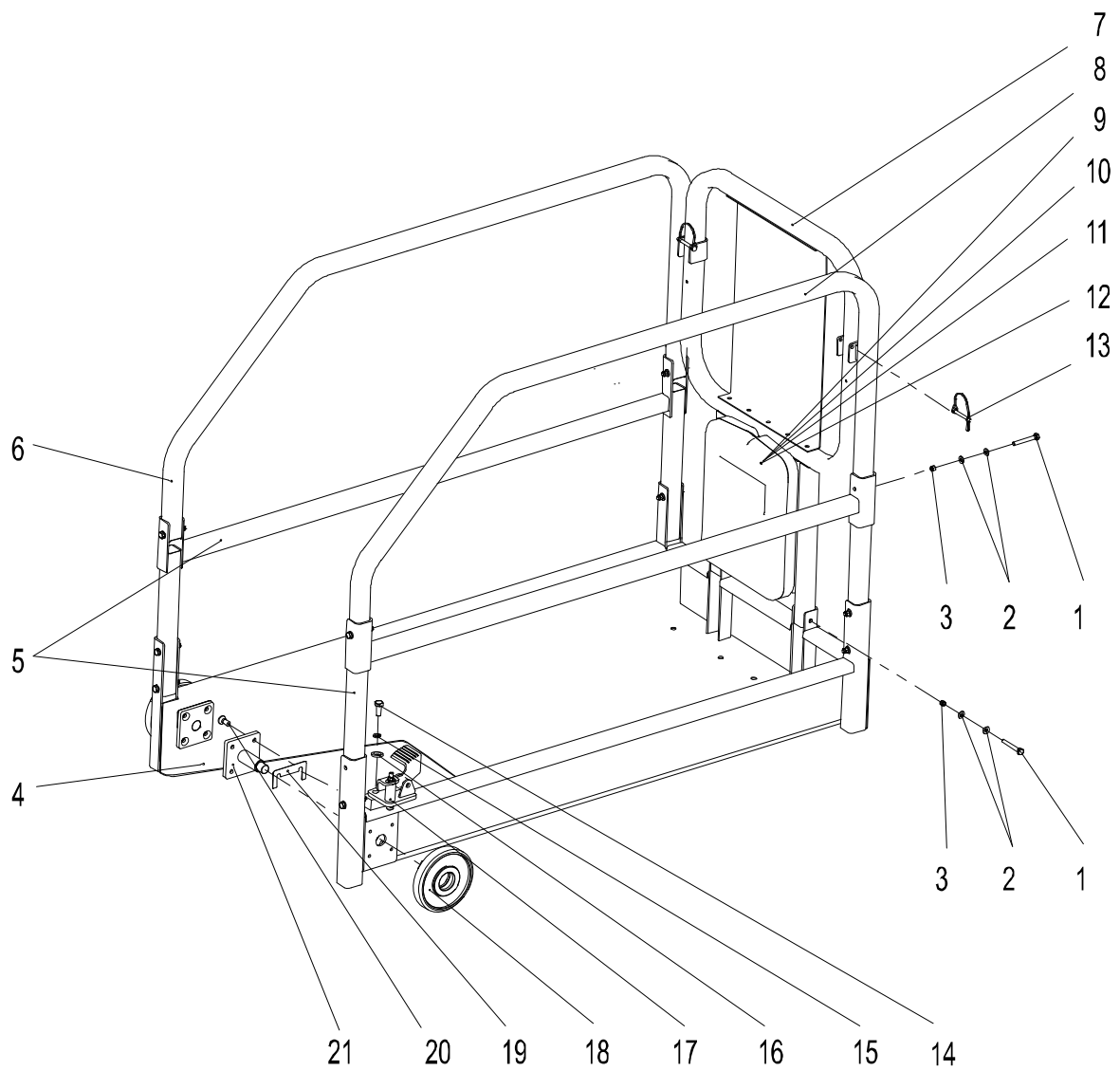
ZS1623RT Platform Pulley



ZS1623RT Platform Pulley

NO.	Material No.	Item and Spec	Units	Remark
1	1040300082	Retaining ring 47	1	GB/T893.1-1986
2	1050201257	Bearing 6204-2RS	1	GB/T276-1994
3	00775600102201010	Fixed platform mounting wheel	1	

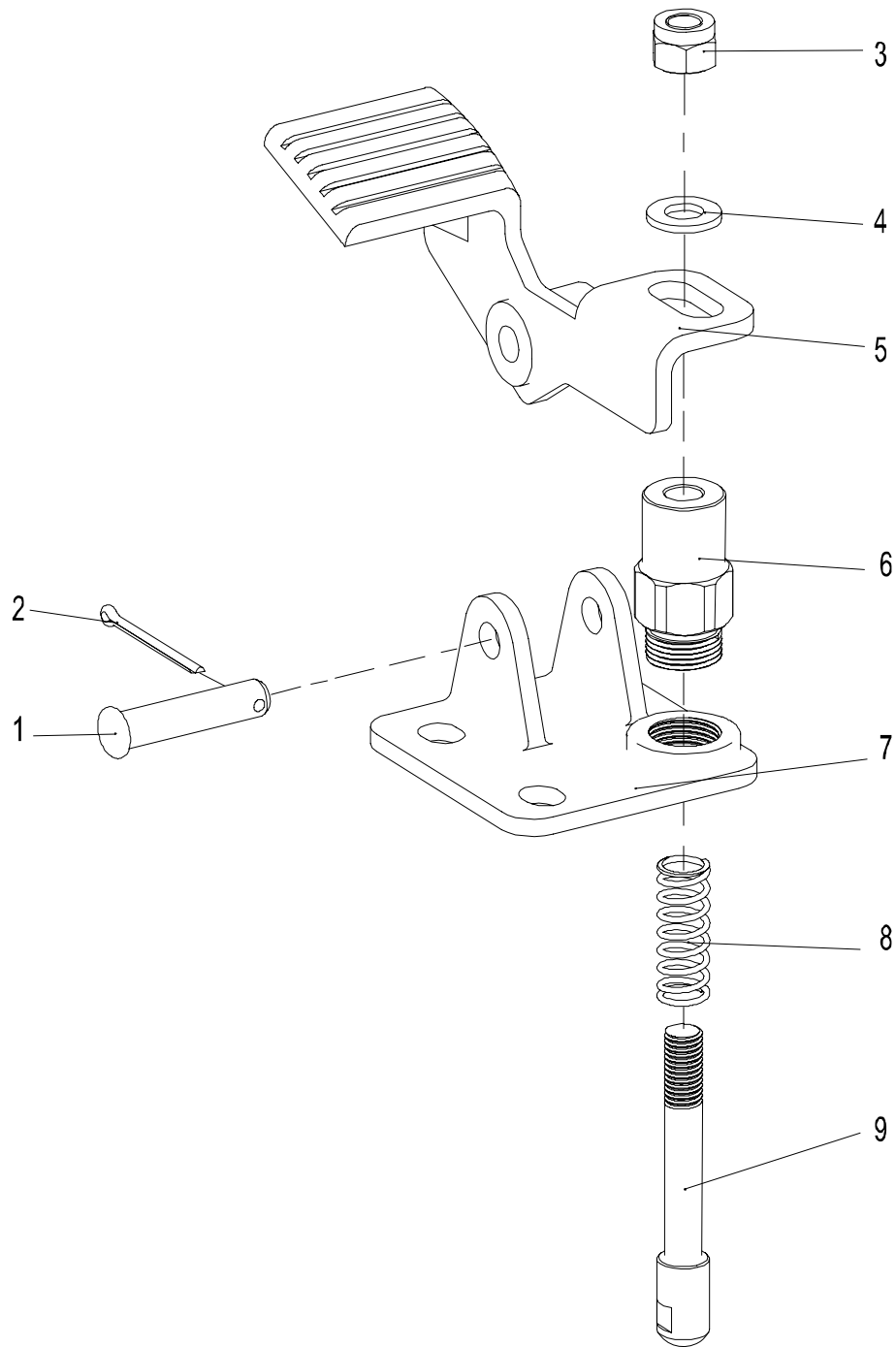
ZS0610C Extension Platform Installation



WORK PLATFORM

ZS0610C Extension Platform Installation

NO.	Material No.	Item and Spec	Units	Remark
1	1040000156	Bolt M8×60	14	GB/T5783-2000
2	1040300066	Washer 8	28	GB/T97.1-2002
3	1040200503	Nut M8-8	14	GB/T889.1-2000
4	00775300120400000	Lower components	1	
5	00775400101400000	Extendd the platform transition joint	4	
6	00775300101400000	Guard rails I	1	
7	00775300121600000	Guard rails II	1	
8	00775400101000000	Guard rails III	1	
9	1999904986	Storage box	1	
10	1040102341	Screw M5×12-8.8	4	GB/T70.1-2000
11	1040300048	Washer 5	4	GB/T97.1-2002
12	1040200867	Nut M5	4	GB/T889.1-2000
13	1100400025	D pin 6.3×55	2	
14	1040000114	Bolt M10×25	2	GB/T5783-2000
15	1040300067	Washer 10	2	GB/T93-1987
16	1040300061	Washer 10	2	GB/T97.1-2002
17	00775600100800000	Pedal device	1	
18	00775600102600000	Exxtension platform mounts wheel assembly	2	
19	00775600100001020	Gasket I	2	
20	1040102718	Screw M8×50	8	GB/T70.1-2000
21	00775600102600000	Platform pin mounting seat	2	

ZS0610C Pedal Installation

ZS0610C Pedal Installation

NO.	Material No.	Item and Spec	Units	Remark
1	1040500606	Pin B10×45	1	GB/T882-2008
2	1040500240	Pin 3.2×25	1	GB/T91-2000
3	1040200504	Nut M10-8	1	GB/T889.1-2000
4	1040300061	Washer 10	1	GB/T97.1-2002
5	00775600100801020	Their feet on the board	1	
6	00775600100801040	Pedal guide pin sleeve	1	
7	00775600100801050	Pedal support plate	1	
8	00775600100801030	Spring	1	
9	00775600100801060	Pedal pin	1	

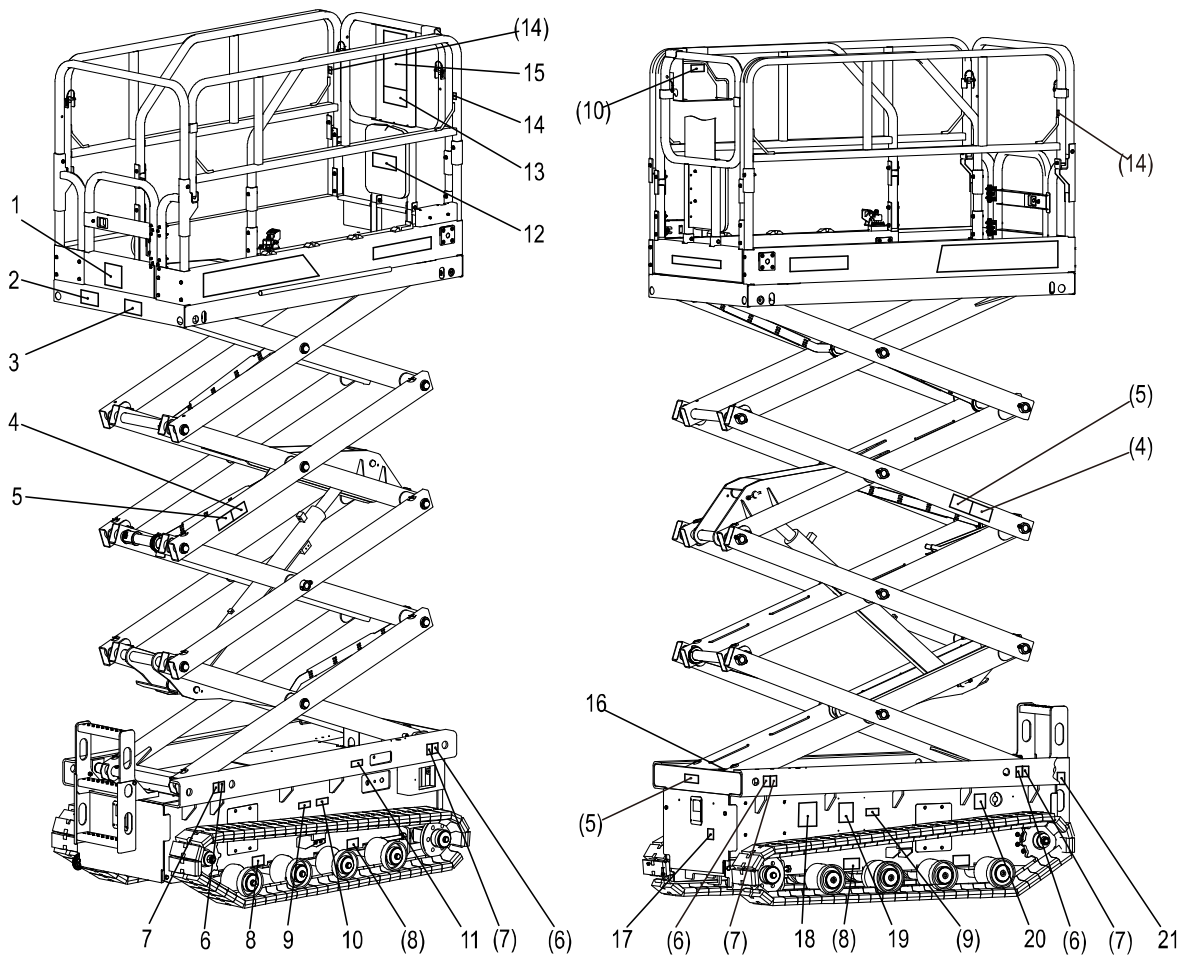
ZOOMLION

Parts Manual

Section 5 Decal



ZS0610C Series Decal Installation



ZS0610C Series Decal Installation

NO.	Material No.	Item and Spec	Units	Remark
1	00775307080402170	Label- Max Manual Force	1	
2	00775307080202050	Label- Load 250kg	1	
3	00775307080402180	Label-Tilt the Road	1	
4	00775307080402220	Label- Safety Arm	2	
5	00775307080402100	Label- Danger- Crushing Hazard	3	
6	00775307080202010	Label- Bound to Point	4	
7	00775307080202210	Label-Forklift Hole	4	
8	00775307080402200	Label-Grounding Load	2	
9	00775307080402030	Label- Read the Instructions	2	
10	00775307080402150	Label-Emergency Descent	1	
11	00775307080402040	Label- Store the Operation and Safety Manual	1	
12	00775307080402020	Label- Danger- Tip-over Hazard	1	
13	00775307080202090	Label- Lanyard Anchorage Point	4	
14	00775307080402230	Label- Safety Rules	1	
15	00775307080402120	Label- Danger- Tip-over Hazard	1	
16	00775307080202140	Label-Charger Power Supply	1	
17	00775307080402130	Label- Pre-operation Inspection	1	
18	00775307080402060	Label- Danger- Explosion and Fire Hazard	1	
19	00775307080402110	Label- Main Power Switch	1	
20	00775307080402190	Label-Plum Bolt Tightening	2	

CRAWLER SCISSOR LIFTS

Parts Manual

ZOOMLION INTELLIGENT ACCESS MACHINERY CO.,LTD.

Add:Tengfei Road 997 , Wangcheng District, Changsha, Hunan,PRC

Zip Code:410200

E-mail:awm@zoomlion.com

Tel:400-800-0157



ZOOMLION